

**Nevada Seismological Laboratory  
University of Nevada Reno**

**Seismicity Update – 2018 To Date**

**NESC Meeting**

***August 1, 2018***

# NSL Catalog 2018 – To Date

7887 Located Events

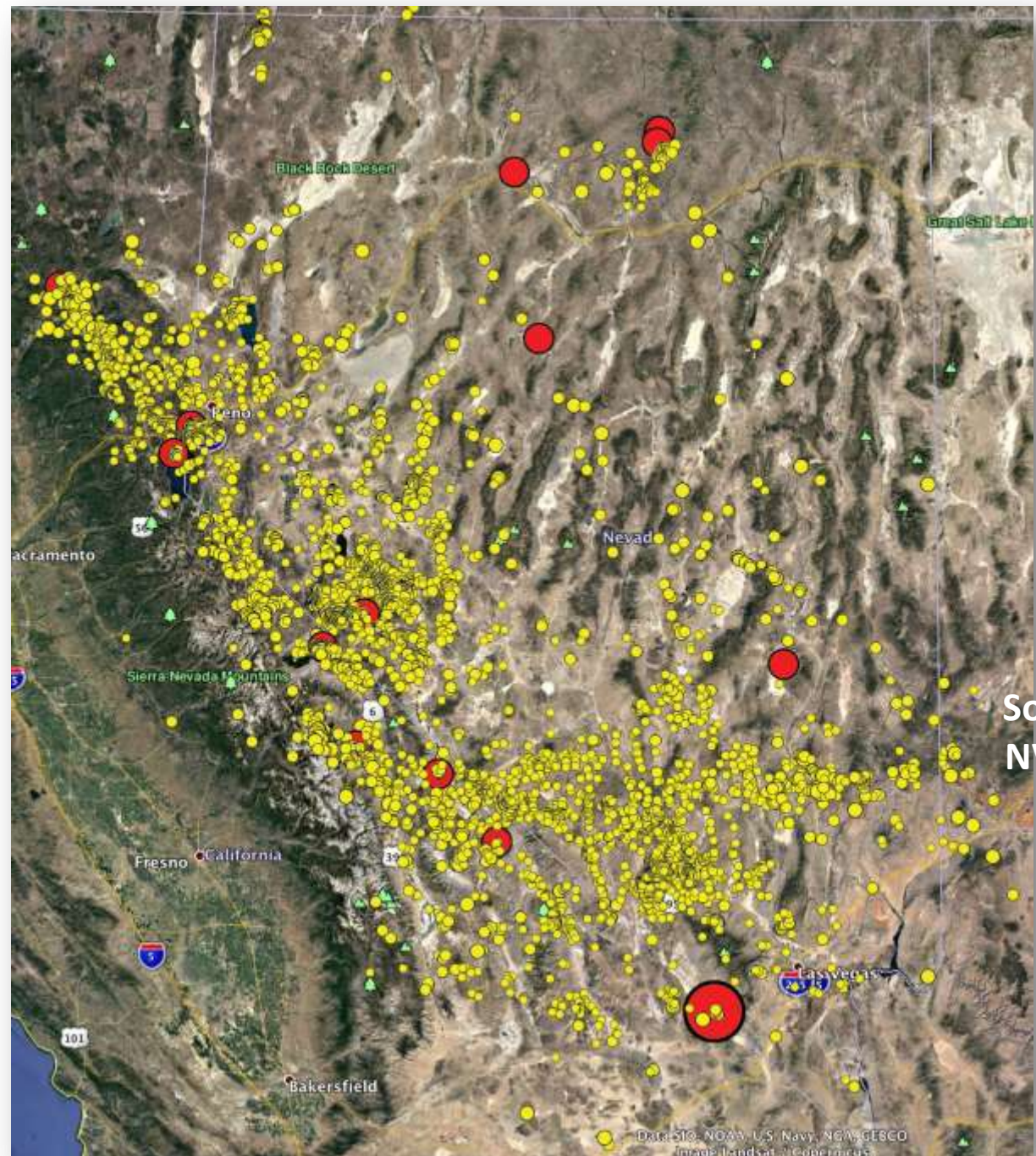
(Red  $M \geq 3$ )

1  $M \geq 4$

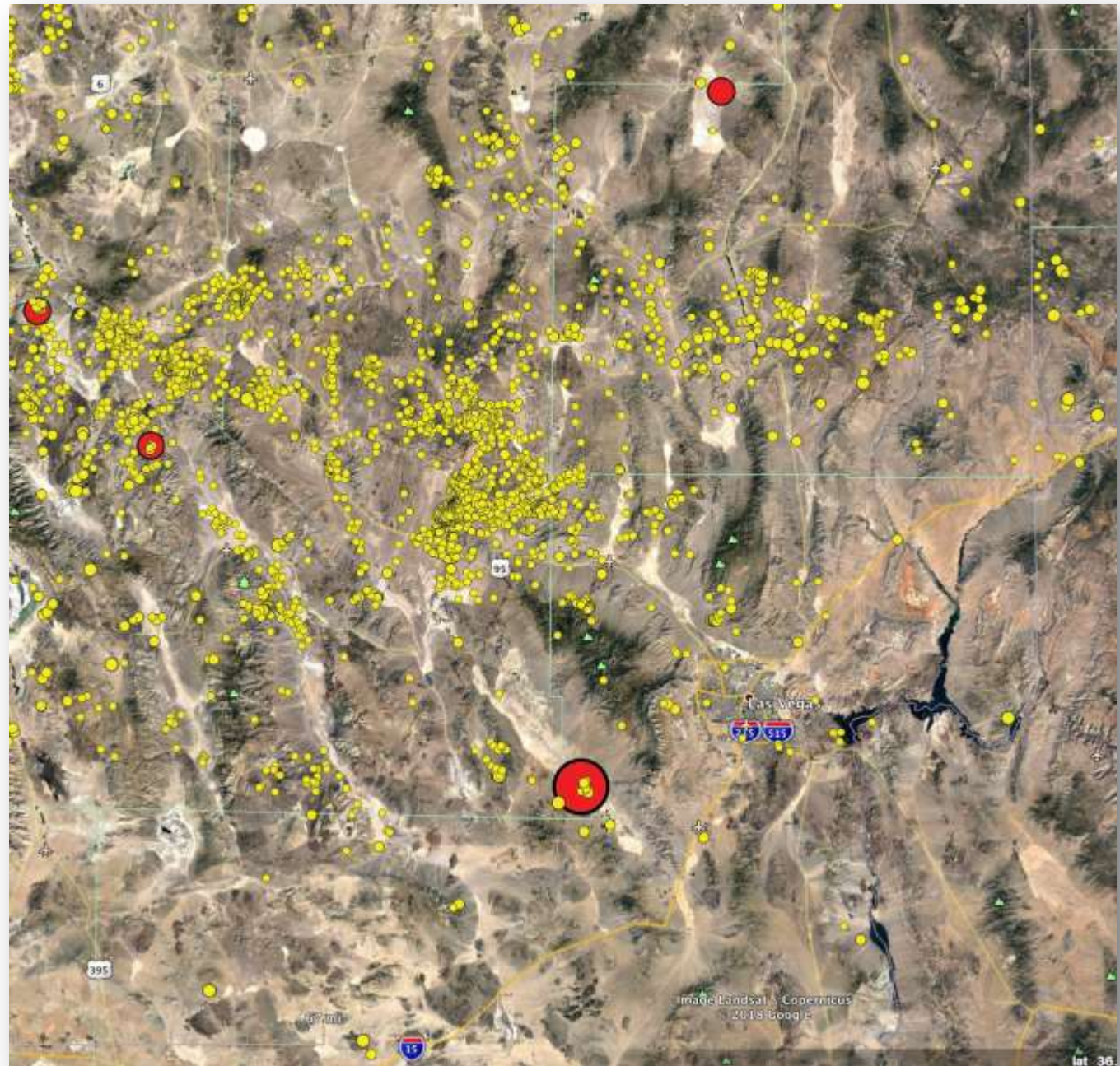
15  $M \geq 3$

150  $M \geq 2$

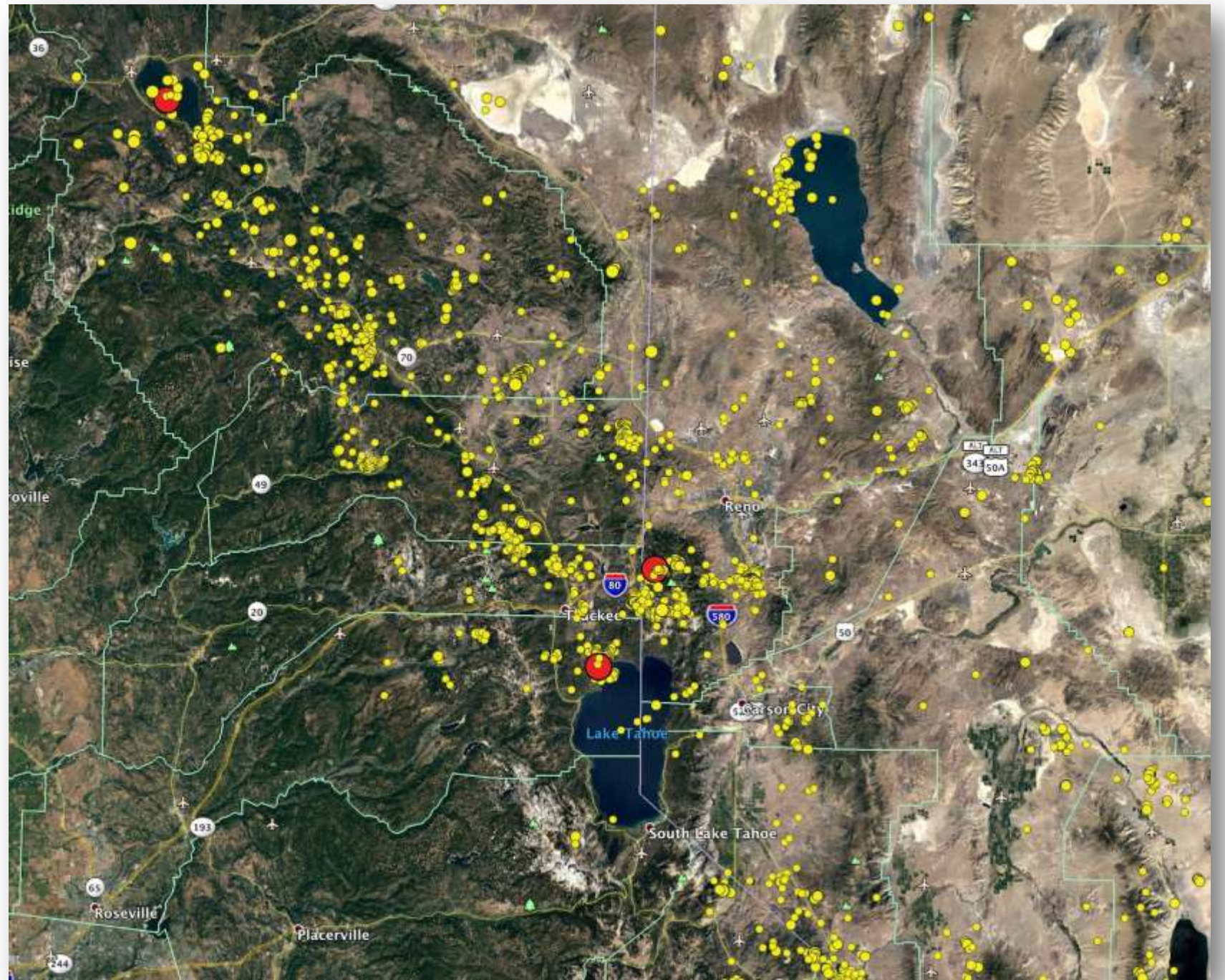
2018 Pace: 13,500/yr



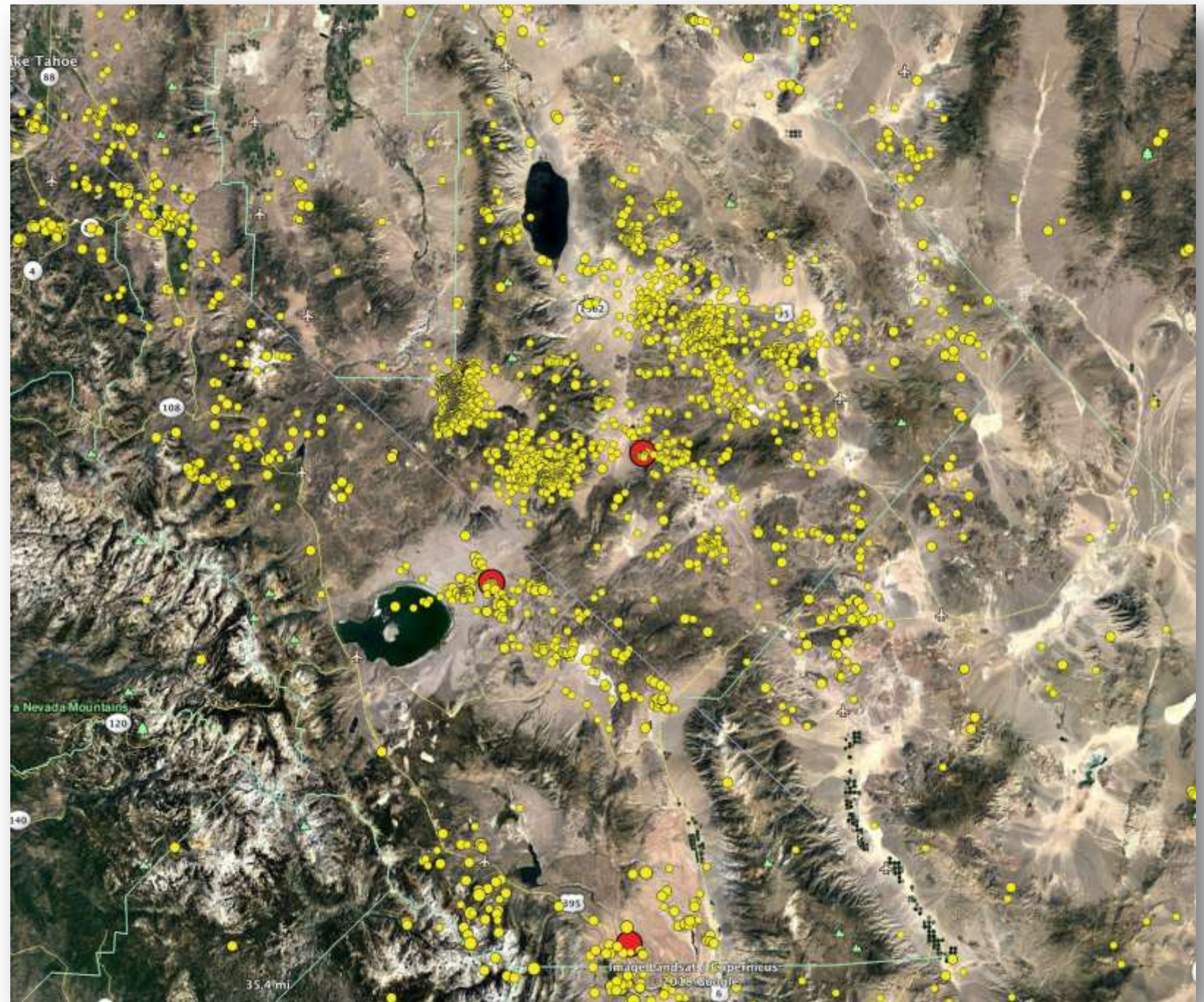
# S NV & SE Cal 2018



# NW NV & NE Cal 2018



**C NV & E Cal 2018**  
**Central Walker Lane**

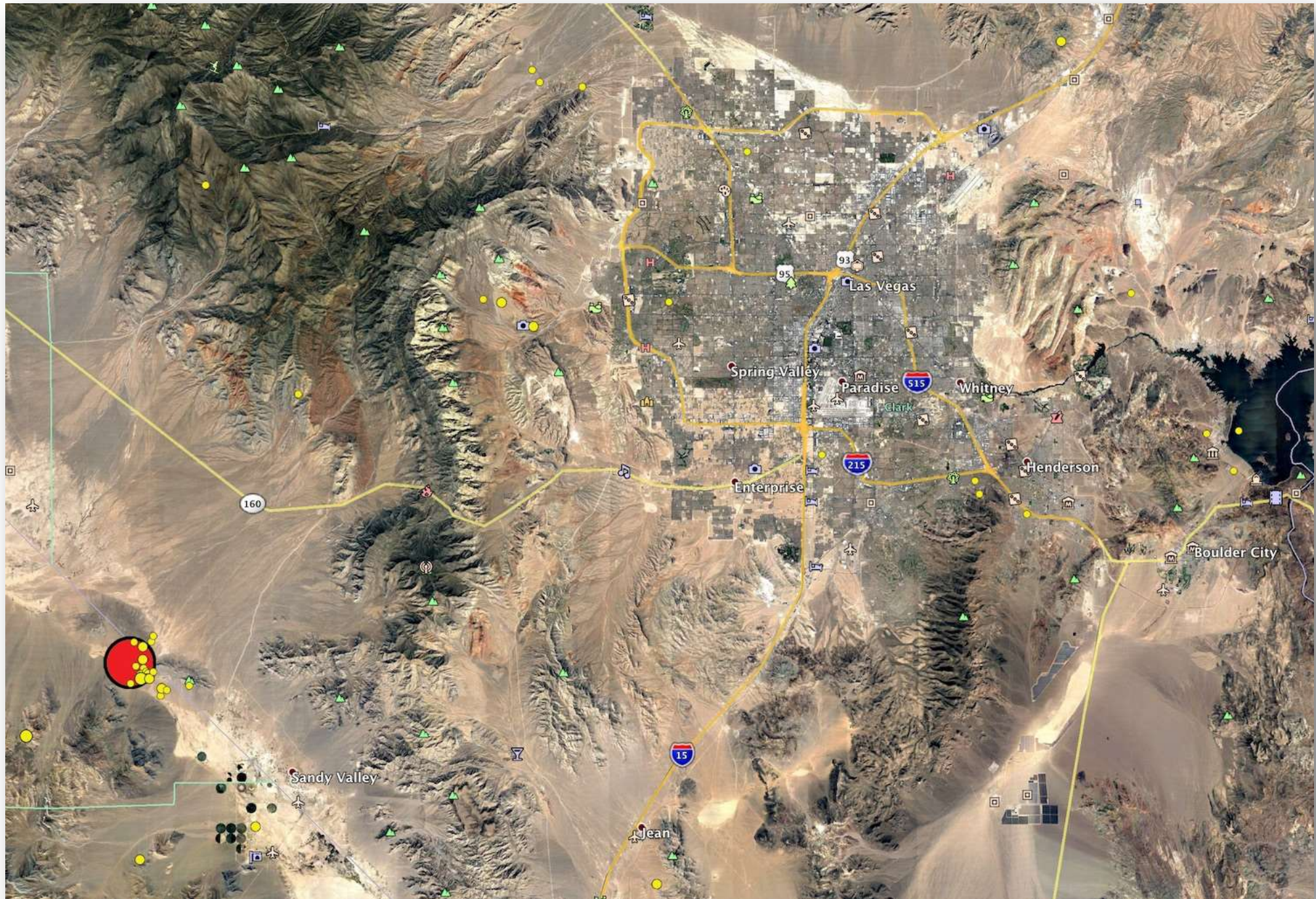


**Mw 4.11**  
**50 km from 215**

**July 5, 2018**  
**15:17 UTC**

**Lat: 35.8945**  
**Lon: -115.7758**  
**Depth: 8.56**

**Number of  
aftershocks**



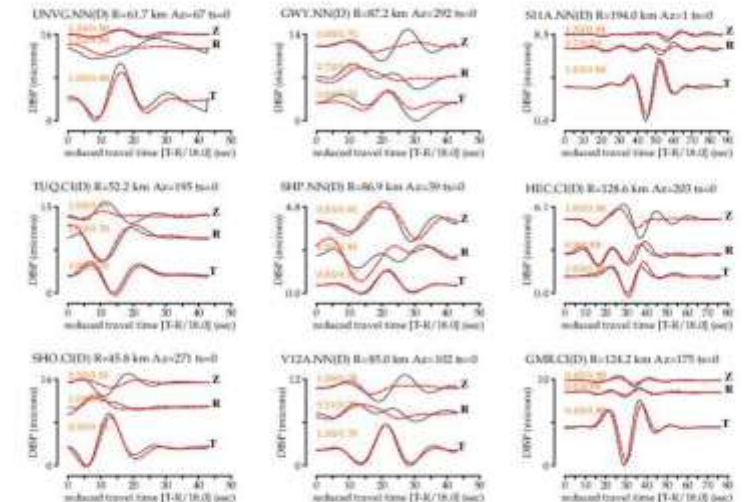
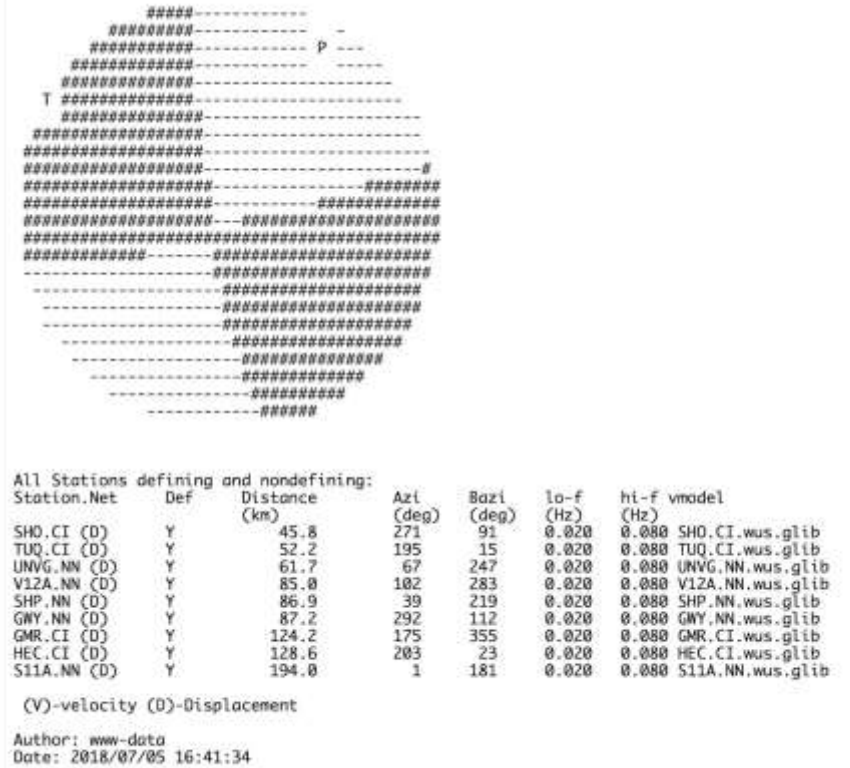
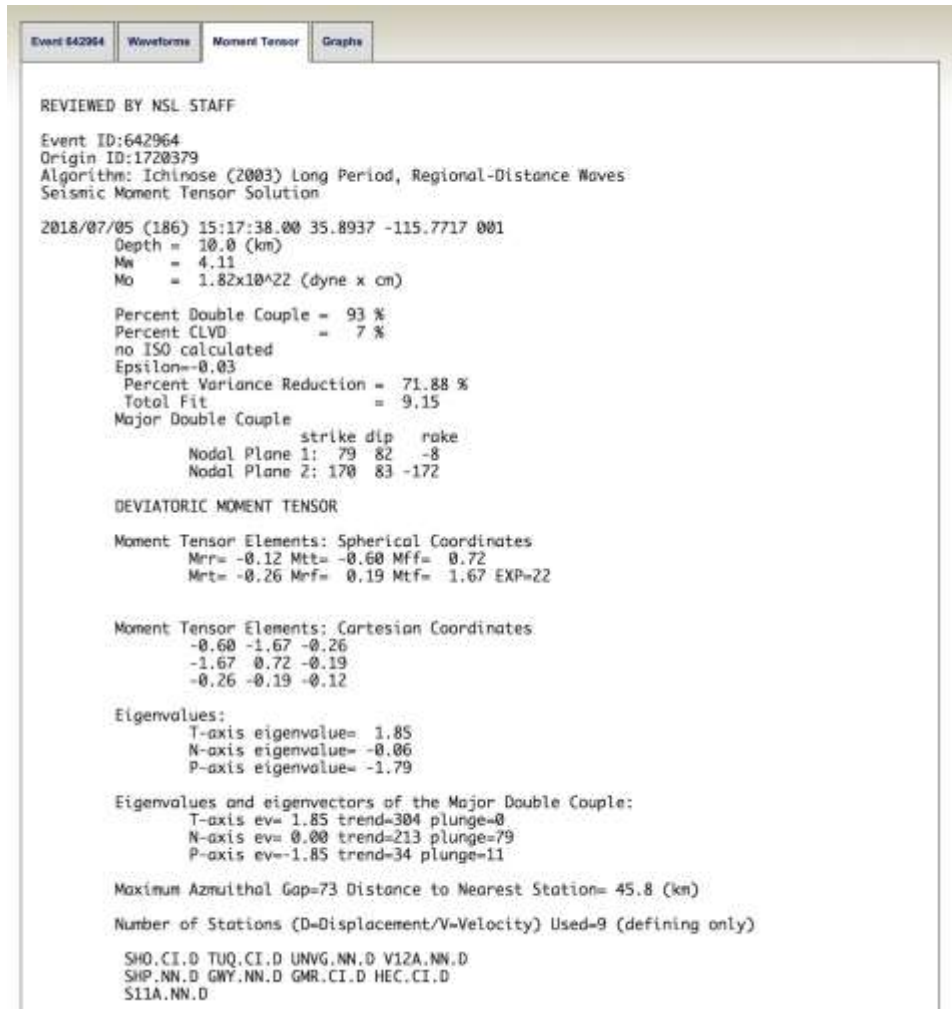
# Moment Tensor Solution

Mw 4.11

50 km from 215

July 5, 2018

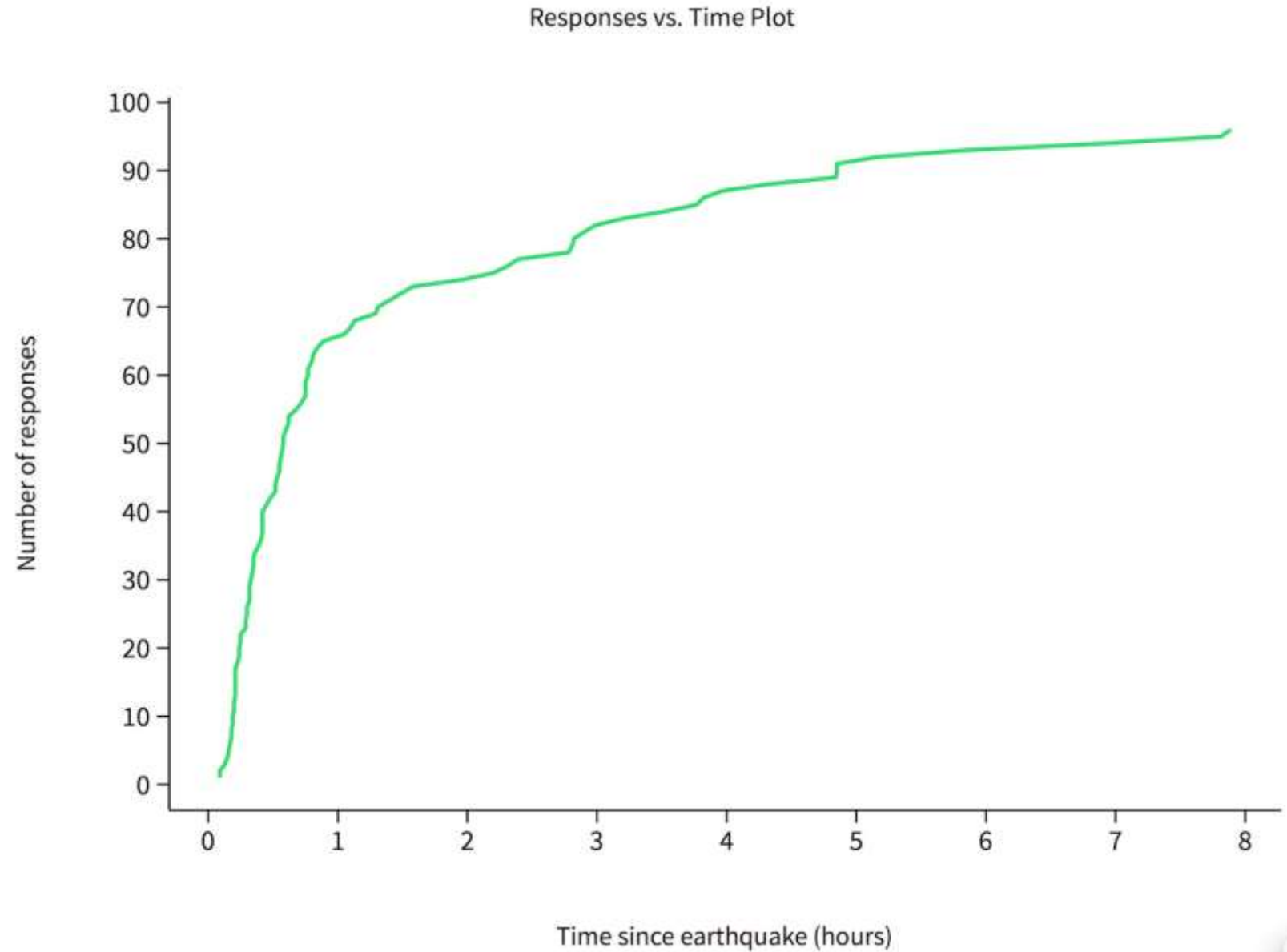
15:17 UTC



**Vegas Area Mw 4.11**

**GS: Did You Feel It?**

**~100 Responses**



<https://earthquake.usgs.gov/earthquakes/eventpage/nn00642964#executive>



Perry Fire – AlertWildfire Virginia Peak Camera - 7/31/2018 5:41PM - Paul Petersen BLM Camera Control

