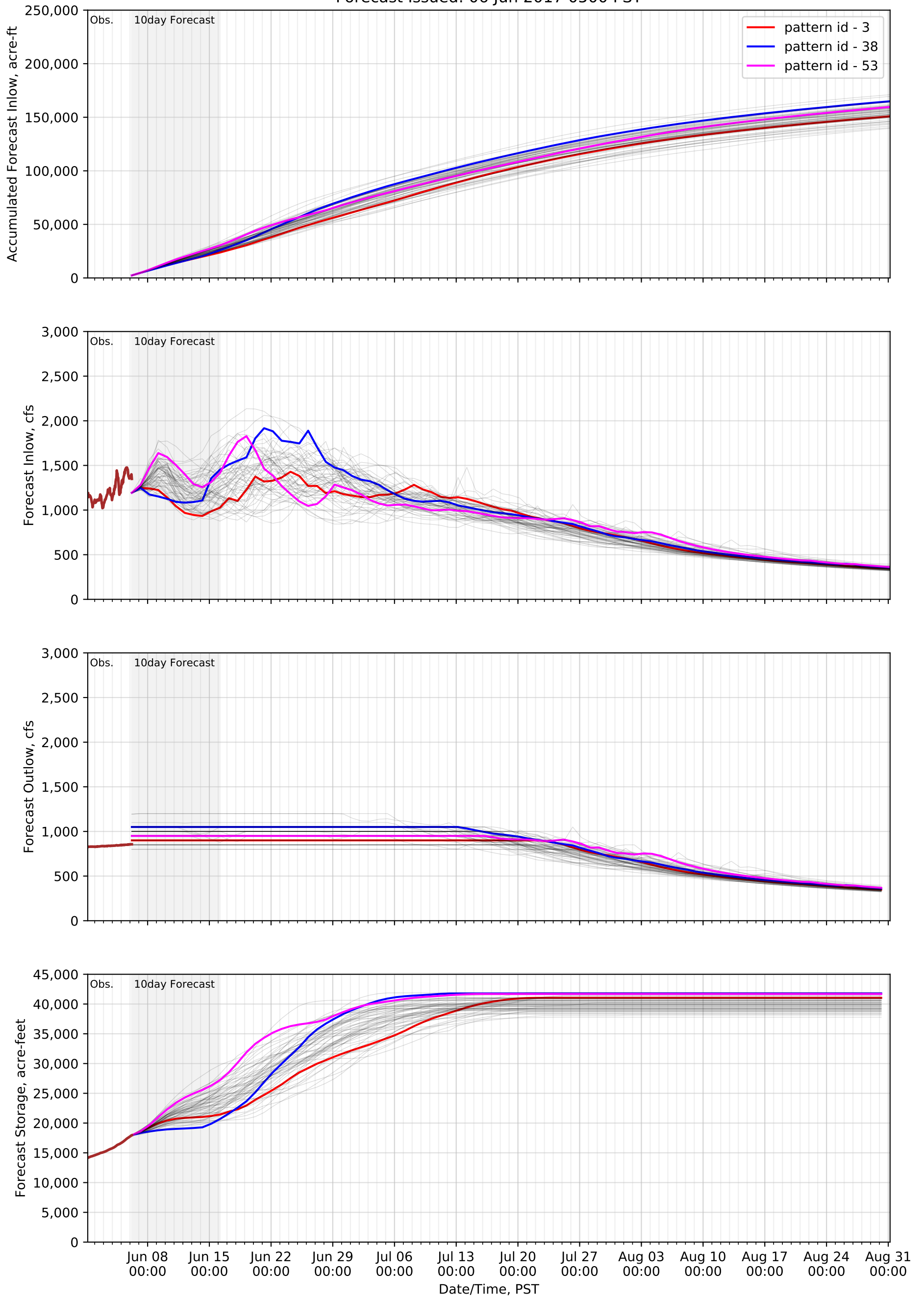
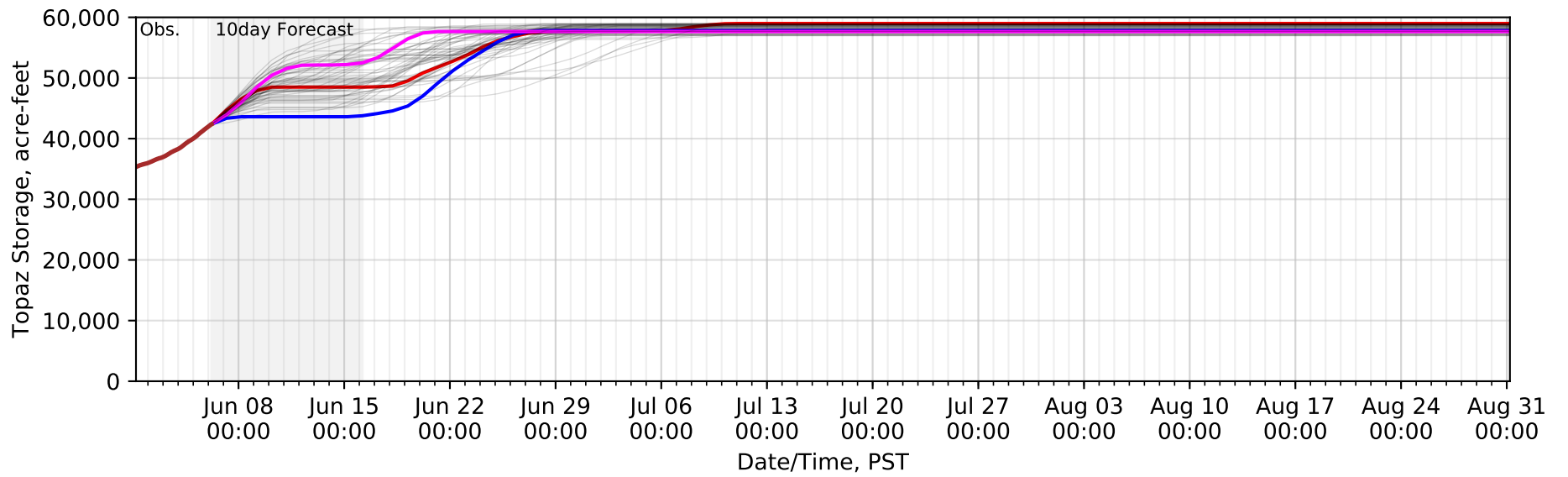
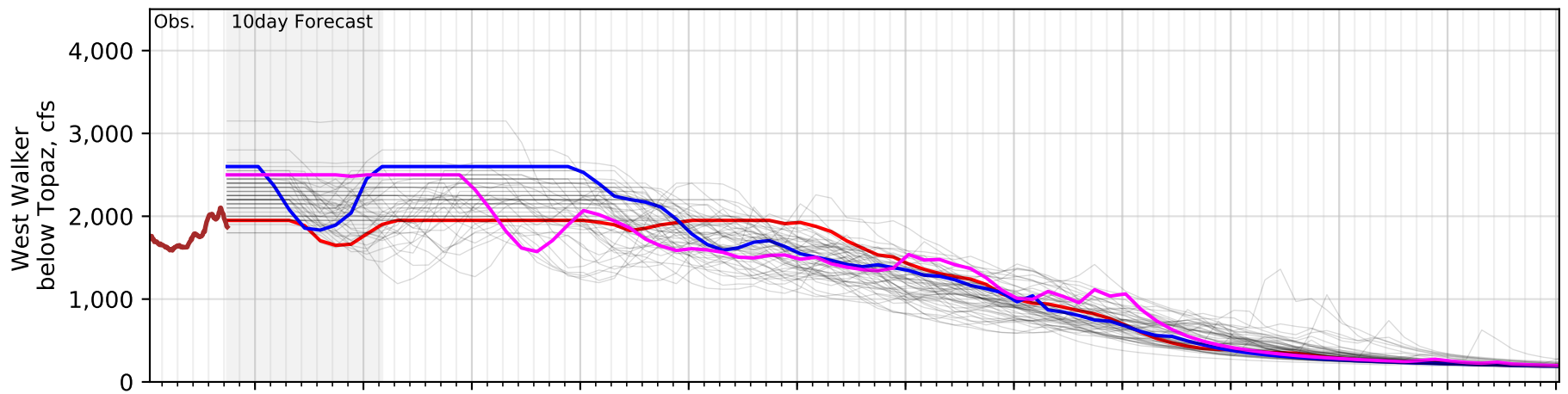
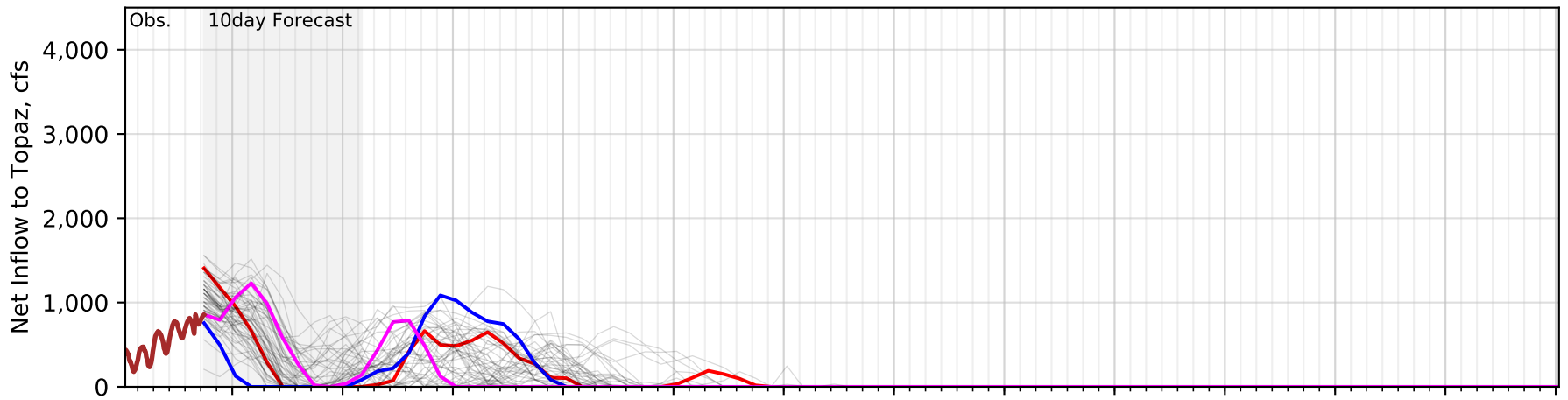
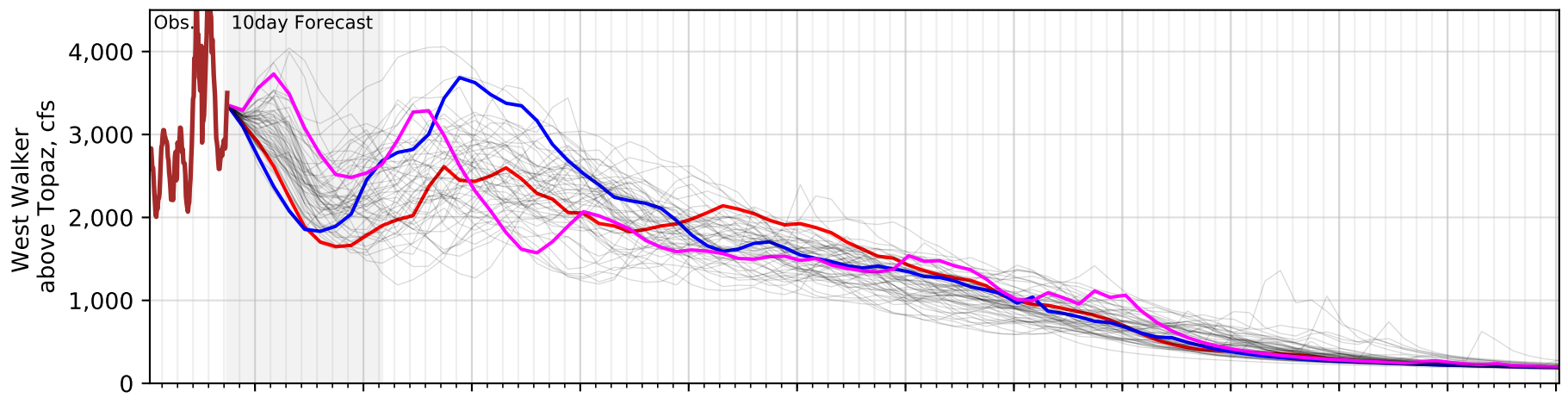
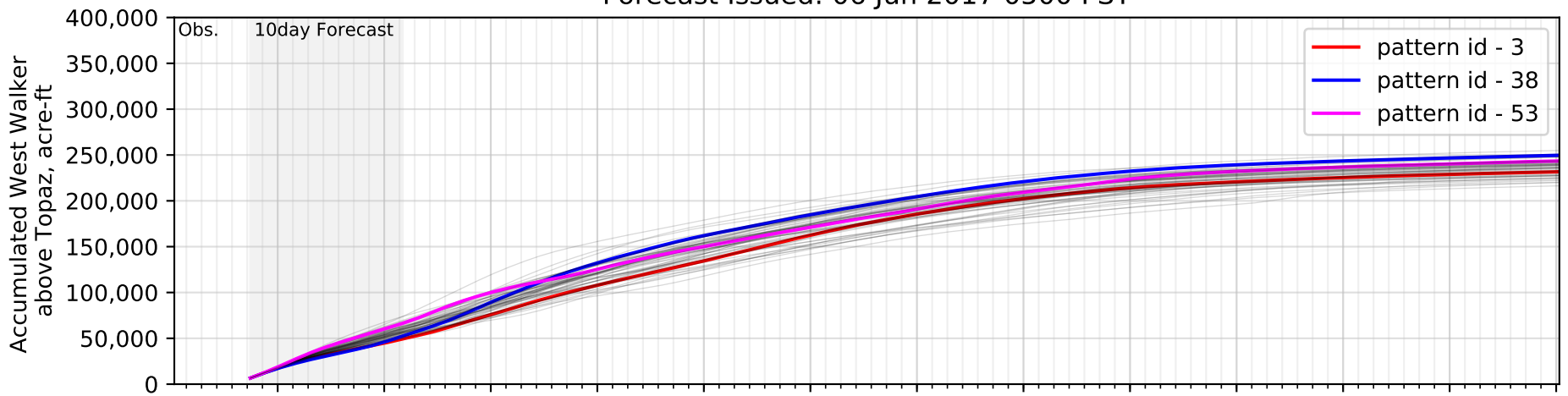


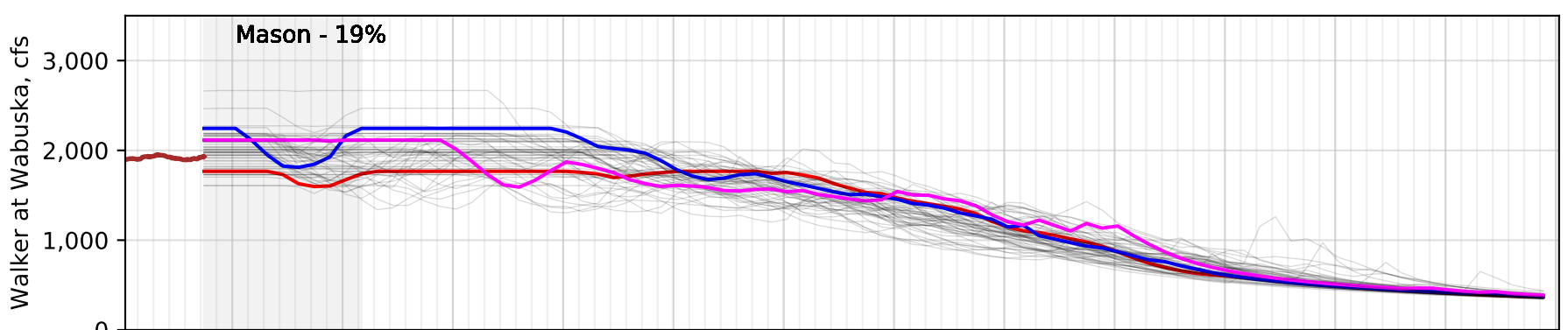
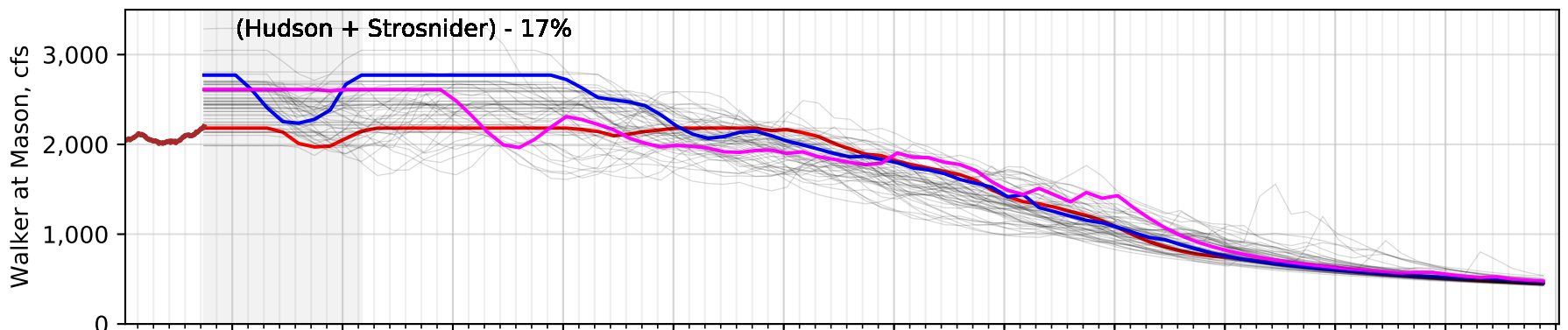
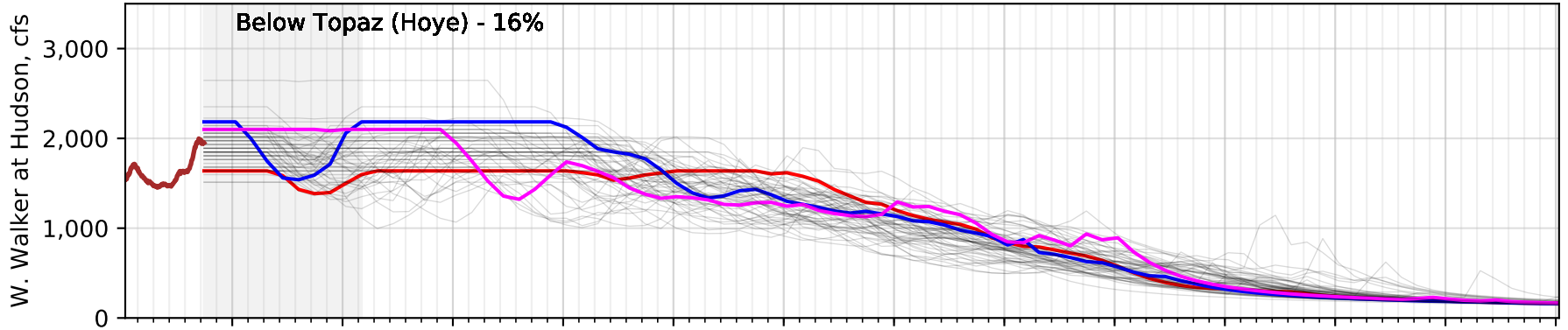
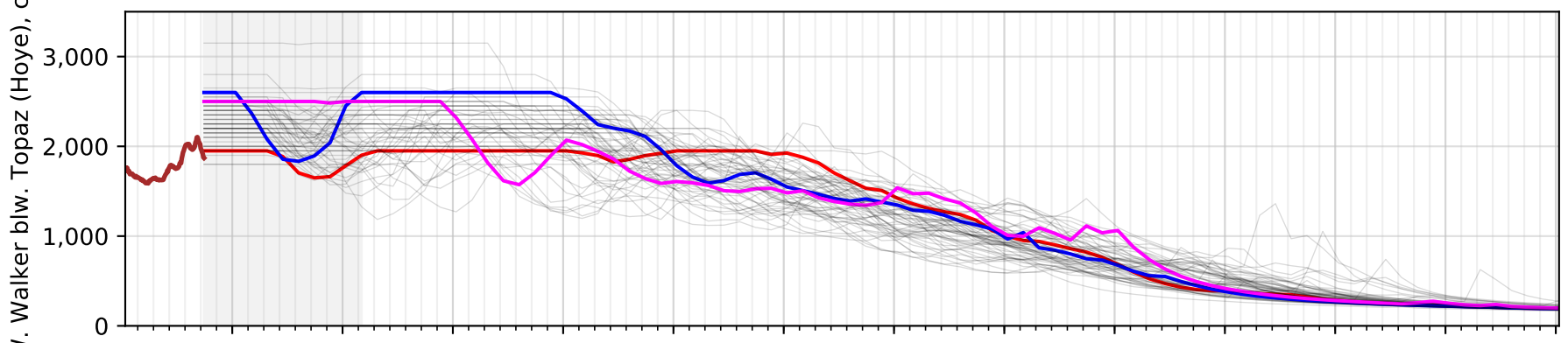
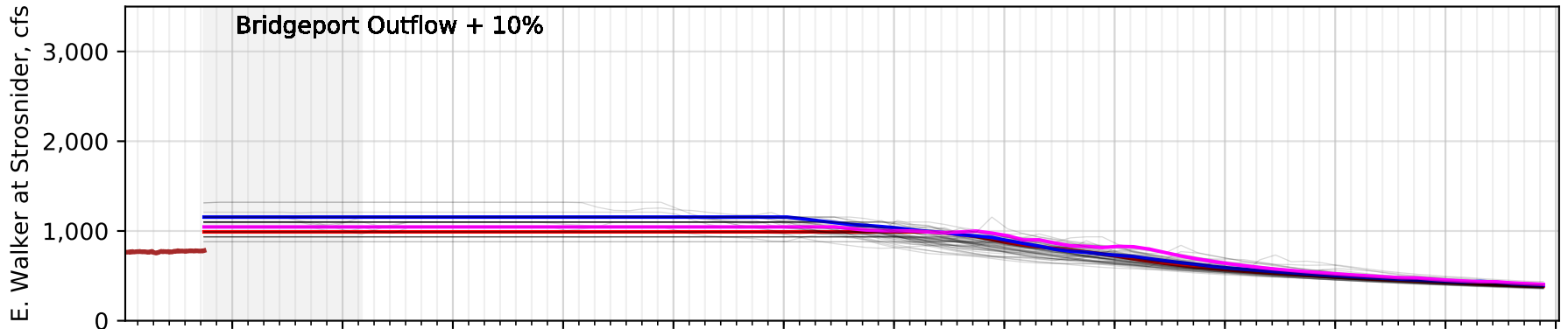
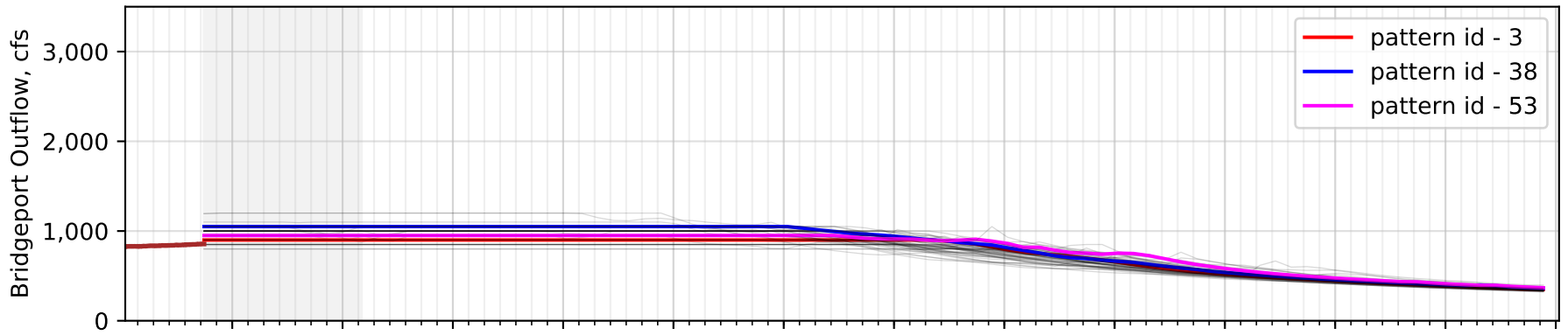
CNRFCLong-Term Ensemble Forecast
Site: Bridgeport Reservoir (BPRC1)
Forecast Issued: 06 Jun 2017 0500 PST



CNRFC Long-Term Ensemble Forecast
 Site: West Walker River - Hwy 395 below Little Walker (WWBC1)
 Forecast Issued: 06 Jun 2017 0500 PST



Walker Basin Forecast Overview
Forecast Issued: 06 Jun 2017, 12:00 GMT



Jun 08 00:00 Jun 15 00:00 Jun 22 00:00 Jun 29 00:00 Jul 06 00:00 Jul 13 00:00 Jul 20 00:00 Jul 27 00:00 Aug 03 00:00 Aug 10 00:00 Aug 17 00:00 Aug 24 00:00 Aug 31 00:00
Date/Time, PST

Walker River Basin Peak Flow Forecast Summary

Peak Flows from Today through August 31 [cfs]

Probability of Exceedence [%]	Bridgeport Outflow [cfs]	E. Walker at Strosnider [cfs]	W. Walker blw Topaz [cfs]	W. Walker at Hudson [cfs]	Walker at Mason [cfs]	Walker at Wabuska [cfs]
Max	1200	1320	3150	2646	3291	2666
5	1050	1155	2600	2184	2782	2253
10	1050	1155	2550	2142	2701	2188
25	1000	1100	2400	2016	2621	2123
50	1000	1100	2250	1890	2446	1981
75	900	990	2100	1764	2250	1823
90	850	935	1950	1638	2135	1729
Min	800	880	1800	1512	1985	1608

Peak Flows in the Next Ten Days [cfs]

Probability of Exceedence [%]	Bridgeport Outflow [cfs]	E. Walker at Strosnider [cfs]	W. Walker blw Topaz [cfs]	W. Walker at Hudson [cfs]	Walker at Mason [cfs]	Walker at Wabuska [cfs]
Max	1200	1320	3150	2646	3291	2666
5	1050	1155	2600	2184	2782	2253
10	1050	1155	2550	2142	2701	2188
25	1000	1100	2400	2016	2621	2123
50	1000	1100	2250	1890	2446	1981
75	900	990	2100	1764	2250	1823
90	850	935	1950	1638	2135	1729
Min	800	880	1800	1512	1985	1608

Flood Stage Flow Thresholds [cfs]

Bridgeport Outflow [cfs]	E. Walker at Strosnider [cfs]	W. Walker blw Topaz [cfs]	W. Walker at Hudson [cfs]	Walker at Mason [cfs]	Walker at Wabuska [cfs]
1300	768	2620	n/a	1790	1360