

List of Tables, Figures and Appendices

Figures

Figure 3-1	Churchill County Population
Figure 3-2	Churchill County Employment Distribution
Figure 3-3	City of Fallon Employment Distribution
Figure 5-1	U.S. Drought Monitor for February 9, 2016
Figure 5-2	Replacement Wells
Figure 5-3	Earthquake Activity in Churchill County from 1872-2014
Figure 5-4	Schematic Major Fault Map of Churchill County
Figure 5-5	Percentage of Visits for Influenza-like Illness
Figure 5-6	State Where Person Infected w/E.coli 2009
Figure 5-7	Photo of Fallon Flood 1907
Figure 5-8	Photo of Homes along Carson River in Fallon
Figure 5-9	Regional Distribution of Mormon Crickets
Figure 5-10	Maximum 1-Day Total Snowfall for Fallon exp. STN.NV.
Figure 5-11	Percent of Time with Blowing Sand & Dust
Figure 5-12	Volcanic Ash Dispersal Map for Long Valley Caldera
Figure 5-13	Fire History Map

Appendices

Appendix A Adoption Resolution

Appendix B Figures

Figure B-1	Churchill Surface Management Map
Figure B-2	Land Use Map
Figure B-3	City Earthquake Faults
Figure B-4	County Earthquake Faults
Figure B-5	FEMA – FIRM Flood Zones
Figure B-6	Potential Canal Levee Breaks - Study
Figure B-7	Dam and Critical Control Structures
Figure B-8	Potential Hazardous Materials – Churchill County
Figure B-9	Potential Hazardous Materials – City of Fallon
Figure B-10	Cheat Grass Locations in Churchill County
Figure B-11	Fallon Wildfire Urban Interface Area and Historical Fires
Figure B-12	Potential Winter Storm Areas

Appendix C Public Information

Appendix D Meeting Agendas, Notes & Handouts

Committee felt there was a high rate of probability for canal failure within Churchill County and the City of Fallon due to the Fernley Canal failure in 2008. The reason for the failure is still under investigation but may have been due to rodent burrows. Churchill County has requested the Army Corp of Engineers complete a detailed study of the canals. A map is included in Appendix B of the canals however, the potential areas for levee breaks will not be available until after this plan is completed. Lidar imaging is currently underway which will allow a study of the areas of impact for a levee break. There is not currently an impact analysis. The Fernley Canal failure can be used as a basis for evaluating the extent of a failure, which would include a few hundred homes, the committee considers the probability high.

All the dams except for the Lahontan dam feed into the canal system and its failure would direct water into the canal system, which could cause heavy damage. A failure of the Lahontan dam however would be extensive along the Carson River drainage and impact the entire City of Fallon and the majority of the residents of Churchill as the major highways would be impacted. The Committee felt there was a low rate of probability for dam failure. A map is included in Appendix B with dam locations.

National Flood Insurance Program (NFIP)

Churchill County participates in the NFIP and has a CRS rating of 10. Although the County does not participate in the CRS the Building Department works closely with the public to ensure that construction standards are met and there is a good understanding of impacts from flooding and measures to minimize impacts. The County does not permit building in the floodway.

The City of Fallon participates in the NFIP. The City does not participate in the CRS. The City has a “nuisance flooding” floodway within the City boundaries and does not permit building in that area as long as the structure is in compliance with established floodway construction standards.

Repetitive Loss

A repetitive loss property is any insurable building for which two or more claims of more than \$1,000 were paid by the National Flood Insurance Program (NFIP) within any rolling ten-year period, since 1978. A repetitive loss property may or may not be currently insured by the NFIP. Currently there are over 122,000 repetitive loss properties nationwide.

The state is working with a variety of stakeholders to reduce the number of properties considered to be repetitive loss properties and to prevent severe repetitive loss properties from developing. The CWSD as a FEMA CTP is working to help identify and reduce impacts associated with repetitive loss properties

FEMA’s Severe Repetitive Loss (SRL) Program was designed in 2004 to provide funding to reduce or eliminate the long-term risk of flood damage to SRL structures insured under the National Flood insurance Program (NFIP).

An SRL property is defined as a residential property that is covered under an NFIP flood insurance policy and:

- (a) That has at least four NFIP claim payments (including building and contents) over \$5,000 each, and the cumulative amount of such claims payments exceeds \$20,000; or

Formatted: Space Before: 0 pt, Adjust space between Latin and Asian text, Adjust space between Asian text and numbers

SECTION FIVE

Hazard Analysis

tornado occurrence is 1 in 10-20 years with most being categorized as weak tornadoes (EF0 or EF1 on the Fujita Scale).

Severe wind events in the County occur every year and are the result of 1) winter storms, or 2) severe thunderstorms. There is no particular part of the county more or less prone to these high wind events. Wind gusts in winter storms can often reach 40-60 mph in widespread areas, with gusts in severe thunderstorms being more localized but more intense, up to 80 mph. It is virtually certain the county will see at least one of these types of wind storms each year, often several events per year.

Winter storms that generate heavy rainfall that leads to flooding in the County generally occur once every several years. Snowfall accumulation in the County and City are generally associated with a strong low-pressure system dropping out of the Gulf of Alaska with the higher elevations receiving the greatest amount of snow. Minor snowfalls occur virtually every winter, while more major events with widespread travel and infrastructure impacts are much less frequent. [The potential for winter storms will affect all portions of Churchill County equally. Please refer to See Appendix B, Figure B-5-12 for Potential Winter Storm Areas.](#)

Formatted: Highlight

Formatted: Highlight

8.3 EVALUATING AND PRIORITIZING MITIGATION ACTION

The requirements for the evaluation and implementation of mitigation actions, as stipulated in DMA 2000 and its implementing regulations, are described below.

DMA 2000 Requirements: Mitigation Strategy - Implementation of Mitigation Actions

Implementation of Mitigation Actions

Requirement: §201.6(c)(3)(iii): [The mitigation strategy section shall include] an action plan describing how the actions identified in section (c)(3)(ii) will be prioritized, implemented, and administered by the local jurisdiction. Prioritization shall include a special emphasis on the extent to which benefits are maximized according to a cost benefit review of the proposed projects and their associated costs.

Element

- Does the mitigation strategy include how the actions are prioritized? (For example, is there a discussion of the process and criteria used?)
- Does the mitigation strategy address how the actions will be implemented and administered? (For example, does it identify the responsible department, existing and potential resources, and timeframe?)
- Does the prioritization process include an emphasis on the use of a cost-benefit review (see page 3-36 of *Multi-Hazard Mitigation Planning Guidance*) to maximize benefits?

Source: FEMA, March 2008.

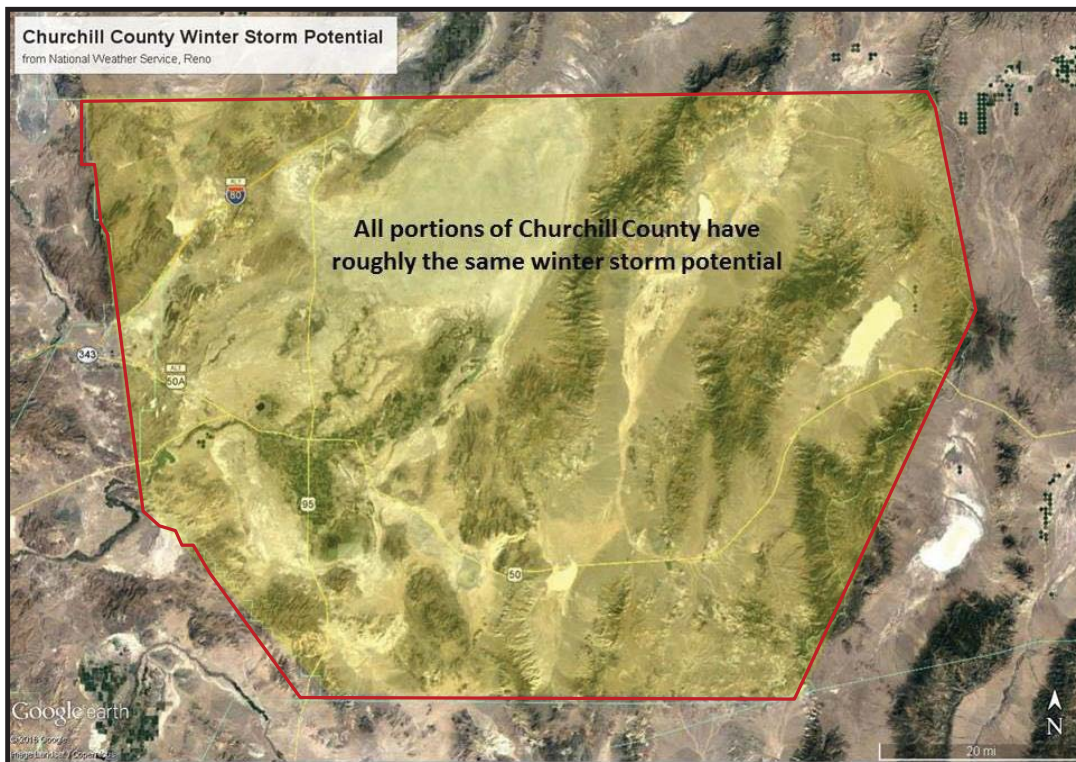
The mitigation actions were finalized during the Planning Committee meeting in September of ~~2014~~2016. At this time the Planning Committee evaluated and prioritized each of the actions. To complete this task, ~~the 16 members of the~~ Planning Committee completed the STAPLE+E evaluation criteria using rankings of one for lowest and five for highest priority, acceptance, feasibility etc. The documentation of the STAPLE+E worksheets are located in Appendix D at the September 20th 2016 Planning Committee meeting information. The rankings for each action were totaled and the actions with the highest number of points were evaluated by the committee. See Table 8-3 for the evaluation criteria.

Formatted: Superscript

Table 8-3: STAPLE+E Evaluation Criteria for Mitigation Actions

Evaluation Category	Discussion "It is important to consider..."	Considerations
Social	The public Support for the overall mitigation strategy and specific mitigation actions	Community acceptance; adversely affects population
Technical	If the mitigation action is technically feasible and if it is the whole or partial solution	Technical feasibility; Long-term solutions; Secondary impacts
Administrative	If the community has the personnel and administrative capabilities necessary to implement the action or whether outside help will be necessary	Staffing; Funding allocation; Maintenance/operations
Political	What the community and its members feel about issues related to the environment, economic development, safety, and emergency management	Political support; Local champion; Public support
Legal	Whether the community has the legal authority to implement the action, or whether	Local, State, and Federal authority; Potential legal challenge

Appendix B Figures



Potential Winter Storm Areas for Churchill County

Map courtesy of NOAA, January 11, 2017

Formatted: Left

Formatted: Left, Indent: Left: 0.5"

Formatted: Font: Not Bold, Italic, No underline

Formatted: Font: 12 pt, Not Bold, Italic, No underline

STAPLE + E Worksheets completed
at the September 20, 2016
Planning Meeting

Meeting Agendas, Sign In Sheet and Handouts

STABLE + E Evaluation Table																								
	S (Social)	T (Technical)	A (Administrative)	P (Political)	L (Legal)	E (Economic)	E (Environmental)				PT													
Considerations → Mitigation Actions ↓	Community Acceptance	Effect on Segment of Population	Technical Feasibility	Long-term Solution	Secondary Impacts	Judging	Funding Allocation	Management Operations	Political Support	Local Champion	Public Support	State Authority	Existing Local Authority	Potential Legal Challenge	Benefits of Action	Costs of Action	Contribution to Economic Goals	Overall Funding Required	Effect on Local Water	Effect on Endangered Species	Effect on HAZMAT/Waste Sites	Consistent with Native Habitat	Consistent with Local / Federal Laws	Weighted Total
1.A. Update the Master Plan to be consistent with the hazard area maps and implementation strategies developed in the MIMP every 10 years. Update Ordinances every 3 years.	5	5	5	5	5	5	5	5	4	4	5	4	5	5	5	4	4	5	2	1	3	1	1	26
1.B. Annually review the County's & City's Emergency Operations Plan and identify needed plan updates.	3	3	5	5	5	5	5	5	4	4	3	4	5	2	4	3	4	5	2	1	3	1	2	26
1.C. Increase GIS and mapping capabilities to assess the risks in the County & City.	3	3	5	5	5	5	5	5	4	4	3	4	5	2	4	3	4	5	2	1	3	1	2	26
1.D. Continue	3	3	5	5	5	5	5	5	4	4	3	4	5	2	4	3	4	5	2	1	3	1	2	26

	S (Social)	T (Technical)	A (Administrative)	P (Political)	L (Legal)	E (Economic)	E (Environmental)	PT															
Considerations → Mitigation ↓ Adaptation	Community Acceptance Effect on Segment of Population	Technical Feasibility Long-term Solution Secondary Impacts	Inflation Inflation Alleviated Maintenance / Operations	Political Support Local Champion Public Support	State Authority Existing Local Authority Potential Legal Challenge	Benefits of Action Cost of Action Contribution to Economic Goals Adverse Funding Required	Effect on Land / Water Effect on Endangered Species Effect on RAZMA/ Wetland Sites Consistent with Native Habitat Consistent with Local / Federal Laws	Property Tied															
planning and coordination with multi-agency/regional planning for multi-hazardity (applies to Goals 1-5)	3	3	4	5	5	4	5	3	4	5	5	4	5	5	4	5	1	1	1	1	3		
1.1 Integration of new information (i.e. LIDAR, USACE Canal Report) into County & City planning documents.	3	3	5	5	5	5	5	5	5	3	4	5	2	5	4	4	5	1	1	1	1	2	26
2.A Utilize social media as a communication tool, as well as an education tool for hazard loss prevention.	5	5	4	4	4	3	3	3	3	5	2	3	1	5	2	5	2	1	1	1	1	2	27
2.B Conduct a minimum of one disaster exercises each year.	5	4	5	4	4	5	5	5	5	5	4	2	5	1	5	4	4	1	1	1	1	4	28
2.C. Prepare, develop, & distribute	4	4	4	4	4	5	5	5	5	5	4	2	5	1	5	4	4	1	1	1	1	4	29

Appendix D

Meeting Agendas, Sign In Sheet and Handouts

STAPLE + E Evaluation Table																								
	S (Social)		T (Technical)			A (Administrative)			P (Political)		L (Legal)		E (Economic)			E (Environmental)					PT			
Considerations →	Community Acceptance	Effect on Segment of Population	Technical Feasibility	Long-term Solution	Secondary Impacts	Staffing	Funding Allocated	Maintenance Operations	Political Support	Local Champions	Public Support	State Authority	Existing Local Authority	Potential Legal Challenge	Benefit of Action	Cost of Action	Contributes to Economic Goals	Outside Funding Required	Effect on Land/ Water	Effect on Endangered Species	Effect on HAZNAT/Waste Sites	Consistent with Native Habitat	Consistent with Local / Federal Laws	Priority Total
appropriate public information about hazard mitigation programs and projects at County and City-sponsored events.	4	4	5	5	5	4	4	4	5	5	4	2	4	2	5	4	4	5	1	1	1	1	3	26
3.A Pursue studies and formalized agreements with upstream agencies to minimize impacts of drought conditions, including aquifer water quality, ground stabilization, economic impacts and municipal/private well water supply.	4	4	5	5	5	5	5	5	5	5	4	3	5	4	5	5	5	5	1	1	1	1	4	28
3.B Encourage public participation in																								

STAPLE + E Evaluation Table																								
	S (Social)		T (Technical)			A (Administrative)		P (Political)		L (Legal)		E (Economic)			E (Environmental)				P					
Considerations →	Community Acceptance	Effect on Segment of Population	Technical Feasibility	Long-term Solution	Secondary Impacts	Staffing	Funding Allocated	Maintenance Operations	Political Support	Local Change on	Public Support	State Authority	Existing Local Authority	Potential Legal Challenge	Benefit of Action	Cost of Action	Contributes to Economic Goals	Outside Funding Required	Effect on Land/ Water	Effect on Endangered Species	Effect on HAZMAT/Waste Sites	Consistent with Native Habitat	Consistent with Local / Federal Laws	Priority Total
Mitigation Actions ↓																								
drought strategies through public information programs on water conservation and drought resistant landscaping and through building code ordinances.	4	4	5	5	5	4	5	5	5	5	4	4	5	4	5	5	5	5	1	1	1	1	3	29
	4		5				5		5			4			5					1				29
4.A Continue to enforce the International Building Code (IBC) provisions pertaining to grading and construction relative to seismic hazards. Update County Codes to IBC 2012 when it is released.	3	4	5	5	5	4	4	5	5	4	3	3	5	4	5	5	5	5	1	1	1	1	5	36
	3		5				4		4			4			5					1				36
4.B Implement an Unreinforced Masonry (URM) building program that determines the structural safety of critical																								

Meeting Agendas, Sign In Sheet and Handouts

STAPLE + E Evaluation Table																							
	S	T	A		P	L	E			E			PT										
	(Social)	(Technical)	(Administrative)	(Political)	(Legal)	(Economic)	(Environmental)																
Considerations → Mitigation ↓	Community Acceptance: Effect on Segment of Population	Technical Feasibility	Long-term Solution	Secondary Impacts	Staffing	Funding Allocation	Maintenance Operations	Political Support	Local Champions	Public Support	State Authority	Existing Legal Authority	Potential Legal Challenge	Benefits of Action	Cost of Action	Contributes to Economic Goals	Portable Fund not Required	Effect on Local Water	Effect on Endangered Species	Effect on HAGMAT Water Sites	Consistent with Native Habitat	Consistent with Local / Federal Laws	Priority Final
Facility and infrastructure, and retrofit buildings, if necessary.	4	4	4	4	3	3	3	3	3	3	4	3	3	3	3	3	3	1	1	1	1	5	21
A.C. Implement an Unconformed Masonry (URM) building program that determines the structural safety of existing building, inventory, and retrofit buildings, if necessary.	2	2	3	3	2	2	2	3	3	3	2	3	4	2	2	2	2	1	1	1	1	4	16
5.A. Improve communication, collaboration and integration among stakeholders and promote awareness of geohazards threats.	2	2	3	3	3	2	2	2	3	3	3	2	3	1	2	2	2	1	1	1	1	4	16
5.B. Create & implement a training and exercise program relative to	2	3			2			3			3			2				1					

[illegible]

Appendix D

Meeting Agendas, Sign In Sheet and Handouts

STAPLE + E Evaluation Table															
	S	T	A	P	L	E			E			PT			
	(Social)	(Technical)	(Administrative)	(Political)	(Legal)	(Economic)			(Environmental)						
Considerations →	Community Acceptance	Effect on Segment of Population	Technical Feasibility	Long-term Solution	Secondary Impacts	Staffing	Funding Allocated	Maintenance/ Operations	Political Support	Local Champion	Public Support	State Authority	Potential Legal Challenge		
Mitigation Actions ↓									Benefits of Action	Cost of Action	Contributors to Economic Goals	Outside Funding Required	Effect on Land/ Water		
									Effect on Endangered Species	Effect on HAZMAT/ Waste Sites	Consistent with Native Habitat	Consistent with Local / Federal Laws	Priority Total		
treatment facilities to reduce impact from flood.	3	5	5	4	4	5	5	5	5	5	1	1	1	4	27
6.D Formalize agreements to utilize federal lands to spread flood and precautionary release waters.	5	5	5	5	5	5	5	5	5	5	5	1	1	1	31
6.E Land acquisition of repetitive loss structures.	2	4	4	4	4	4	4	4	4	4	4	1	1	1	23
6.F Improve natural waterways in County for drainage.	3	5	5	5	5	5	5	5	5	5	5	1	1	1	29
6.G Implement multiple diversion projects for flood reduction along the Carson River and canal system.	3	5	5	5	5	5	5	5	5	5	5	1	1	1	29
7.A In areas at risk to severe															

STAPLE + E Evaluation Table														
	S	T	A	P	L	E			E				PT	
	(Social)	(Technical)	(Administrative)	(Political)	(Legal)	(Economic)			(Environmental)					
Considerations →	Community Acceptance	Effect on Segment of Population	Technical Feasibility	Long-term Solution	Secondary Impacts	Staffing	Funding Allocated	Maintenance/ Operations	Political Support	Local Champion	Public Support	State Authority	Potential Legal Challenge	
Mitigation Actions ↓									Benefits of Action	Cost of Action	Contributors to Economic Goals	Outside Funding Required	Effect on Land/ Water	
									Effect on Endangered Species	Effect on HAZMAT/Waste Sites	Consistent with Native Habitat	Consistent with Local / Federal Laws	Priority Total	
weather, retrofit public buildings to withstand more loads and sever winds to prevent roof collapse/damage	2	3	3	3	3	3								18
7.D Enhance shelter facilities to withstand severe weather events (electrical, structural, etc.)	3	4	4	4	4	4								24
8.A Develop partnerships for a community based vegetation management program including chipping programs	4	4	4	4	4	4								25
9.A Enforce zoning ordinances to reduce public health risks from hazardous materials releases	3	4	4	4	4	4								24

Appendix D

Meeting Agendas, Sign In Sheet and Handouts

STAPLE + E Evaluation Table													
	S	T	A	P	L	E	E	PT					
	(Social)	(Technical)	(Administrative)	(Political)	(Legal)	(Economic)	(Environmental)						
Considerations →	Community Acceptance	Effect on Segment of Population	Technical Feasibility	Long-term Solution	Secondary Impacts	Staffing	Funding Allocated	Maintenance/ Operations	Political Support	Local Champions	Public Support	State Authority	Excluding Local Authority
Mitigation Actions ↓													
10. A	2	2	2	2	2	2							
11. A	4	5	5	5	5	5							
12. A	2	2	2	2	2	2							

STAPLE + E Evaluation Table													
	S	T	A	P	L	E	E	PT					
	(Social)	(Technical)	(Administrative)	(Political)	(Legal)	(Economic)	(Environmental)						
Considerations →	Community Acceptance	Effect on Segment of Population	Technical Feasibility	Long-term Solution	Secondary Impacts	Staffing	Funding Allocated	Maintenance/ Operations	Political Support	Local Champions	Public Support	State Authority	Excluding Local Authority
Mitigation Actions ↓													
1.A. Update the Master Plan to be consistent with the hazard area maps and implementation strategies developed in the MIMP every 10 years. Update Ordinances every 3 years.	4 3 4	3 2 3 2	3 3 3 2	4 4 2 2	2 2 2 2	3 2 3 2 3	5 5 2 4 2 3	24					
1.B. Annually review the County's & City's Emergency Operations Plan and identify needed plan updates.	3 2 3	2 2 2 2	3 3 2 2	4 4 3 2	4 2 4 2	3 2 3 2 3	5 5 2 4 2 3	21					
1.C. Increase GIS and mapping capability to assess the risks in the County & City.	5 2 5	4 4 4 3	4 4 4 4	4 4 3 3	3 3 3 2 4	4 3 3 3	5 4 1 5 1 2	29					
1.D. Continue													

Meeting Agendas, Sign In Sheet and Handouts

STAPLE + E Evaluation Table																						
	S (Social)	T (Technical)	A (Administrative)	P (Political)	L (Legal)	E (Economic)	E (Environmental)			P (Physical)												
Considerations →	Community Acceptance	Effect on Segment of Population																				
Mitigation ↓		Technical Feasibility	Long-term Solution	Secondary Impacts	Staffing	Funding Allocated	Maintenance Operations	Political Support	Local Champion	Public Support	State Authority	Building Local Authority	Potential Legal Challenge	Benefits of Action	Cost of Action	Contributors to Economic Goals	Political Funding Required	Effect on Land/Water	Effect on Endangered Species	Effect on HAZMAT/Waste Sites	Consistent with Native Habitat	Consistent with Local/Political Laws
planning and coordination with multi-agency/regional planning for the multi-Azraqi (applies to Goals 2-5)	2 2 2	3 4 4 2	4 4 4 3	3 4 4 2	3 3 3 3	3 3 3 2 2	2 2 1 2 1 5	20														
1.E. Integration of new information (i.e. LIDAR, USACE Coastal Report) into County & City planning documents.	3 2 4	3 2 3 2	3 3 3 2	3 3 3 2	2 1 2 - 1	2 2 2 2 2	3 3 1 2 1 2	19														
2.A Utilize social media as a communication tool, as well as an educational tool for hazard loss prevention.	4 4 5	4 5 4 3	4 4 4 4	5 5 4 4	4 4 4 3	4 4 4 3 4	2 2 1 2 1 2	2														
1.B Conduct a minimum of one disaster exercise each year.	3 2	3 3 3 3	4 4 4 4	5 5 4 4	3 3 3 3	3 3 3 2 3	2 2 1 2 1 2	21														
2.C Prepare, develop, & distribute																						

STAPLE + E Evaluation Table																								
	S (Social)	T (Technical)	A (Administrative)	P (Political)	L (Legal)	E (Economic)	E (Environmental)	PT																
Considerations →	Community Acceptance	Effect on Segment of Population	Technical Feasibility	Long-term Solution	Secondary Impacts	Staffing	Funding Allocated	Maintenance/ Operation	Political Support	Local Champion	Public Support	State Authority	Existing Local Authority	Potential Legal Challenge	Benefits of Action	Cost of Action	Contributions to Economic Growth	Opelinde Pricing Required	Effect on Land/ Water	Effect on Endangered Species	Effect on WAZIMAT/Waste Sites	Consultation with Native's Habitat	Consistency with Local / Federal Laws	Priority Total
Mitigation Actions ↓																								
appropriate public information about local mitigation programs and projects at County and City-sponsored events	2 2 2	2 2 2 2 2 2 2	2 2 2 2 2 2 2	3 3 2 3	2 2 2 2	2 2 2 2 2	2 2 2 2 2 2	2 2 2 2 2 2	2 2 2 2 2 2	2 2 2 2 2 2	2 2 2 2 2 2	2 2 2 2 2 2	2 2 2 2 2 2	2 2 2 2 2 2	2 2 2 2 2 2	2 2 2 2 2 2	2 2 2 2 2 2	2 2 2 2 2 2	2 2 2 2 2 2	2 2 2 2 2 2	2 2 2 2 2 2	2 2 2 2 2 2	2 2 2 2 2 2	15
7.A Permit studies and formalized agreements with upstream agencies to minimize impacts of drought conditions, including aquifer water quality, ground stabilization, economic impacts and municipal/private well water supply.	5 5 5	4 4 4 4 4 4 4	4 4 4 4 4 4 4	4 4 4 4 4 4 4	4 4 4 4 4 4 4	4 4 4 4 4 4 4	4 4 4 4 4 4 4	4 4 4 4 4 4 4	4 4 4 4 4 4 4	4 4 4 4 4 4 4	4 4 4 4 4 4 4	4 4 4 4 4 4 4	4 4 4 4 4 4 4	4 4 4 4 4 4 4	4 4 4 4 4 4 4	4 4 4 4 4 4 4	4 4 4 4 4 4 4	4 4 4 4 4 4 4	4 4 4 4 4 4 4	4 4 4 4 4 4 4	4 4 4 4 4 4 4	4 4 4 4 4 4 4	4 4 4 4 4 4 4	29
7.B Encourage public participation in																								

Meeting Agendas, Sign In Sheet and Handouts

STABLE + E Evaluation Table																								
	S (Social)	T (Technical)	A (Administrative)	P (Political)	L (Legal)	E (Economic)		E (Environmental)			PT													
Considerations →	Community Acceptance	Effect on Segment of Population	Technical Feasibility	Long-term Solution	Secondary Impacts	Staffing	Funding Allocated	Maintenance Operations	Political Support	Local Champions	Public Support	State Authority	Building Local Authority	Potential Legal Challenge	Benefit of Action	Cost of Action	Contribution to Economic Goals	Outside Funding Required	Effect on Local Water	Effect on Endangered Species	Effect on HAZMAT/ War Sites	Consistent with Native Habitat	Consistent with Local / Federal Laws	Priority Total
<div>Mitigation Actions ↓</div> <div><u>drought strategies through public information programs on water conservation and drought resistant landscaping and through scientific work estimates.</u></div> <div>4.A Continue to enforce the International Building Code (IBC) provisions pertaining to grading and construction relative to seismic hazards. Update County Codes to IBC 2012 when it is released.</div> <div>4.B Implement an Unreinforced Masonry (URM) building program that determines the structural safety of critical</div>	4	3	3	3	3	3	3	3	4	4	3	2	2	2	4	4	3	3	5	3	3	4	4	24
	4	3	3	2	2	2	2	2	3	1	2	1	3	1	4	5	4	3	2	1	1	1	5	21

STAPLE + E Evaluation Table									
	S (Social)	T (Technical)	A (Administrative)	P (Political)	L (Legal)	E (Economic)	E (Environmental)	PT	
Considerations → Mitigation Actions ↓	Community Acceptance Effect on Segment of Population Technical Feasibility Long-term Solution Secondary Impacts Staffing Funding Allocation Maintenance Operations Political Support Local Champion Public Support State Authority Existing Local Authority Potential Legal Challenge Benefit of Action Cost of Action Contributors to Economic Growth Double Funding Required Effort on Land / Water Effect on Endangered Species Effect on RAZMA/TWaste Sites Consistent with Native Habitat Consistent with Local / Federal Laws								
facility and infrastructure, and retrofit buildings, if necessary.	253	4223	2222	2253	2444	45254	221122	2	
4.C. Implement an Unreinforced Masonry (URM) building program that determines the structural safety of existing building retrofits, and retrofit buildings, if necessary.	dup 46							21	
5.A. Improve communication, collaboration and integration among stakeholders and promote awareness of systemic threats.	454444	4444	4444	5545	4444	44244	11114	29	
5.B. Create & implement a training and exercise program relative to:	3333	2222	2222	3333	3333	33333	111144	20	

Meeting Agendas, Sign In Sheet and Handouts

	S	T	A	P	L	E	E	F
	(Social)	(Technical)	(Administrative)	(Political)	(Legal)	(Economic)	(Environmental)	
Considerations → Motigation Actions ↓	Community Acceptance Effect on Segment of Population Technical Feasibility Long-term Solution Secondary Impacts Siting Funding Allocation Maintenance Operations			Political Support Local Champion Public Support: State Authority Hiring Local Authority Potential Legal Challenges Barriers to Action		Cost of Action Contributions to Economic Goals Outside Funding Required Effect on Land Water Effect on Polar ground Species Effect on IAZMAT Waste Sites Consistent with Native Habitat Consistent with Local / Federal Laws		
evidence	6.A Review and update flood plans that would include coordination with adjacent counties, cities, and special districts supporting a regional approach to flood control.	44	444	444	444	4444	44444	28
6.B Install new flood facilities including upgrade of the existing storm drain system to current standards including culverts and channel improvements.	3 ~						7	21
6.C Protect and enhance existing water conveyance structures, storage, and								

[illegible]

Appendix D Meeting Agendas, Sign In Sheet and Handouts

STAPLE + E Evaluation Table												
	S (Social)	T (Technical)	A (Administrative)	P (Political)	L (Legal)	E (Economic)	E (Environmental)			P		
Considerations →	Community Acceptance	Effect on Segment of Population	Technical Feasibility	Long-term Solution	Secondary Impacts	Shifting	Planning Allocated	Maintenance Operations	Political Support	Local Champion	Public Support	
Mitigation Actions ↓									Existing Local Authority	Potential Legal Challenge	Barriers of Action	
									Cost of Action	Contributions to Economic Goals	Outside Funding Required	
									Effect on Land & Water	Effect on Endangered Species	Effect on Hazardous Waste Sites	
									Consistent with Native Habitat	Consistent with Local / Federal Laws	Score/Total	
1. Upgrade, retrofit public buildings to withstand severe loads and never widely to prevent total collapse damage	2											14
7. D Enhance shelter facilities to withstand severe weather events (electrical, structural, etc.)	2											14
8. A Develop partnerships for a community based vegetation management program including chipping programs	2											14
9. A Enforce zoning ordinances to reduce public health risks from hazardous materials releases	4											28

STAPLE + E Evaluation Table																								
	S (Social)	T (Technical)	A (Administrative)	P (Political)	L (Legal)	E (Economic)	E (Environmental)				PT													
Considerations →	Community Acceptance	Effect on Segment of Population	Technical Feasibility	Long-term Solution	Secondary Impacts	Shifting	Planning Allocated	Maintenance/ Operation	Political Support	Local Champion	Public Support	State Authority	Existing Local Authority	Potential Legal Challenge	Benefit of Action	Cost of Action	Contributes to Economic Goals	Overdue Funding Required	Effect on Land Use	Effect on Endangered Species	Effect on HAZMAT/ Waste Sites	Consistent w/ Natural Habitat	Consistent w/ In-Land / Flooded Areas	Priority / Total
Mitigation Actions ↓																								
10. A 10B 10C 11. A	1																							7
10E 10F 10G 10H 10I 10J 10K 10L 10M 10N 10O 10P 10Q 10R 10S 10T 10U 10V 10W 10X 10Y 10Z 11. A 11. B 11. C 11. D 11. E 11. F 11. G 11. H 11. I 11. J 11. K 11. L 11. M 11. N 11. O 11. P 11. Q 11. R 11. S 11. T 11. U 11. V 11. W 11. X 11. Y 11. Z 12. A 12. B 12. C 12. D 12. E 12. F 12. G 12. H 12. I 12. J 12. K 12. L 12. M 12. N 12. O 12. P 12. Q 12. R 12. S 12. T 12. U 12. V 12. W 12. X 12. Y 12. Z 13. A 13. B 13. C 13. D 13. E 13. F 13. G 13. H 13. I 13. J 13. K 13. L 13. M 13. N 13. O 13. P 13. Q 13. R 13. S 13. T 13. U 13. V 13. W 13. X 13. Y 13. Z 14. A 14. B 14. C 14. D 14. E 14. F 14. G 14. H 14. I 14. J 14. K 14. L 14. M 14. N 14. O 14. P 14. Q 14. R 14. S 14. T 14. U 14. V 14. W 14. X 14. Y 14. Z 15. A 15. B 15. C 15. D 15. E 15. F 15. G 15. H 15. I 15. J 15. K 15. L 15. M 15. N 15. O 15. P 15. Q 15. R 15. S 15. T 15. U 15. V 15. W 15. X 15. Y 15. Z 16. A 16. B 16. C 16. D 16. E 16. F 16. G 16. H 16. I 16. J 16. K 16. L 16. M 16. N 16. O 16. P 16. Q 16. R 16. S 16. T 16. U 16. V 16. W 16. X 16. Y 16. Z 17. A 17. B 17. C 17. D 17. E 17. F 17. G 17. H 17. I 17. J 17. K 17. L 17. M 17. N 17. O 17. P 17. Q 17. R 17. S 17. T 17. U 17. V 17. W 17. X 17. Y 17. Z 18. A 18. B 18. C 18. D 18. E 18. F 18. G 18. H 18. I 18. J 18. K 18. L 18. M 18. N 18. O 18. P 18. Q 18. R 18. S 18. T 18. U 18. V 18. W 18. X 18. Y 18. Z 19. A 19. B 19. C 19. D 19. E 19. F 19. G 19. H 19. I 19. J 19. K 19. L 19. M 19. N 19. O 19. P 19. Q 19. R 19. S 19. T 19. U 19. V 19. W 19. X 19. Y 19. Z 20. A 20. B 20. C 20. D 20. E 20. F 20. G 20. H 20. I 20. J 20. K 20. L 20. M 20. N 20. O 20. P 20. Q 20. R 20. S 20. T 20. U 20. V 20. W 20. X 20. Y 20. Z 21. A 21. B 21. C 21. D 21. E 21. F 21. G 21. H 21. I 21. J 21. K 21. L 21. M 21. N 21. O 21. P 21. Q 21. R 21. S 21. T 21. U 21. V 21. W 21. X 21. Y 21. Z 22. A 22. B 22. C 22. D 22. E 22. F 22. G 22. H 22. I 22. J 22. K 22. L 22. M 22. N 22. O 22. P 22. Q 22. R 22. S 22. T 22. U 22. V 22. W 22. X 22. Y 22. Z 23. A 23. B 23. C 23. D 23. E 23. F 23. G 23. H 23. I 23. J 23. K 23. L 23. M 23. N 23. O 23. P 23. Q 23. R 23. S 23. T 23. U 23. V 23. W 23. X 23. Y 23. Z 24. A 24. B 24. C 24. D 24. E 24. F 24. G 24. H 24. I 24. J 24. K 24. L 24. M 24. N 24. O 24. P 24. Q 24. R 24. S 24. T 24. U 24. V 24. W 24. X 24. Y 24. Z 25. A 25. B 25. C 25. D 25. E 25. F 25. G 25. H 25. I 25. J 25. K 25. L 25. M 25. N 25. O 25. P 25. Q 25. R 25. S 25. T 25. U 25. V 25. W 25. X 25. Y 25. Z 26. A 26. B 26. C 26. D 26. E 26. F 26. G 26. H 26. I 26. J 26. K 26. L 26. M 26. N 26. O 26. P 26. Q 26. R 26. S 26. T 26. U 26. V 26. W 26. X 26. Y 26. Z 27. A 27. B 27. C 27. D 27. E 27. F 27. G 27. H 27. I 27. J 27. K 27. L 27. M 27. N 27. O 27. P 27. Q 27. R 27. S 27. T 27. U 27. V 27. W 27. X 27. Y 27. Z 28. A 28. B 28. C 28. D 28. E 28. F 28. G 28. H 28. I 28. J 28. K 28. L 28. M 28. N 28. O 28. P 28. Q 28. R 28. S 28. T 28. U 28. V 28. W 28. X 28. Y 28. Z 29. A 29. B 29. C 29. D 29. E 29. F 29. G 29. H 29. I 29. J 29. K 29. L 29. M 29. N 29. O 29. P 29. Q 29. R 29. S 29. T 29. U 29. V 29. W 29. X 29. Y 29. Z 30. A 30. B 30. C 30. D 30. E 30. F 30. G 30. H 30. I 30. J 30. K 30. L 30. M 30. N 30. O 30. P 30. Q 30. R 30. S 30. T 30. U 30. V 30. W 30. X 30. Y 30. Z 31. A 31. B 31. C 31. D 31. E 31. F 31. G 31. H 31. I 31. J 31. K 31. L 31. M 31. N 31. O 31. P 31. Q 31. R 31. S 31. T 31. U 31. V 31. W 31. X 31. Y 31. Z 32. A 32. B 32. C 32. D 32. E 32. F 32. G 32. H 32. I 32. J 32. K 32. L 32. M 32. N 32. O 32. P 32. Q 32. R 32. S 32. T 32. U 32. V 32. W 32. X 32. Y 32. Z 33. A 33. B 33. C 33. D 33. E 33. F 33. G 33. H 33. I 33. J 33. K 33. L 33. M 33. N 33. O 33. P 33. Q 33. R 33. S 33. T 33. U 33. V 33. W 33. X 33. Y 33. Z 34. A 34. B 34. C 34. D 34. E 34. F 34. G 34. H 34. I 34. J 34. K 34. L 34. M 34. N 34. O 34. P 34. Q 34. R 34. S 34. T 34. U 34. V 34. W 34. X 34. Y 34. Z 35. A 35. B 35. C 35. D 35. E 35. F 35. G 35. H 35. I 35. J 35. K 35. L 35. M 35. N 35. O 35. P 35. Q 35. R 35. S 35. T 35. U 35. V 35. W 35. X 35. Y 35. Z 36. A 36. B 36. C 36. D 36. E 36. F 36. G 36. H 36. I 36. J 36. K 36. L 36. M 36. N 36. O 36. P 36. Q 36. R 36. S 36. T 36. U 36. V 36. W 36. X 36. Y 36. Z 37. A 37. B 37. C 37. D 37. E 37. F 37. G 37. H 37. I 37. J 37. K 37. L 37. M 37. N 37. O 37. P 37. Q 37. R 37. S 37. T 37. U 37. V 37. W 37. X 37. Y 37. Z 38. A 38. B 38. C 38. D 38. E 38. F 38. G 38. H 38. I 38. J 38. K 38. L 38. M 38. N 38. O 38. P 38. Q 38. R 38. S 38. T 38. U 38. V 38. W 38. X 38. Y 38. Z 39. A 39. B 39. C 39. D 39. E 39. F 39. G 39. H 39. I 39. J 39. K 39. L 39. M 39. N 39. O 39. P 39. Q 39. R 39. S 39. T 39. U 39. V 39. W 39. X 39. Y 39. Z 40. A 40. B 40. C 40. D 40. E 40. F 40. G 40. H 40. I 40. J 40. K 40. L 40. M 40. N 40. O 40. P 40. Q 40. R 40. S 40. T 40. U 40. V 40. W 40. X 40. Y 40. Z 41. A 41. B 41. C 41. D 41. E 41. F 41. G 41. H 41. I 41. J 41. K 41. L 41. M 41. N 41. O 41. P 41. Q 41. R 41. S 41. T 41. U 41. V 41. W 41. X 41. Y 41. Z 42. A 42. B 42. C 42. D 42. E 42. F 42. G 42. H 42. I 42. J 42. K 42. L 42. M 42. N 42. O 42. P 42. Q 42. R 42. S 42. T 42. U 42. V 42. W 42. X 42. Y 42. Z 43. A 43. B 43. C 43. D 43. E 43. F 43. G 43. H 43. I 43. J 43. K 43. L 43. M 43. N 43. O 43. P 43. Q 43. R 43. S 43. T 43. U 43. V 43. W 43. X 43. Y 43. Z 44. A 44. B 44. C 44. D 44. E 44. F 44. G 44. H 44. I 44. J 44. K 44. L 44. M 44. N 44. O 44. P 44. Q 44. R 44. S 44. T 44. U 44. V 44. W 44. X 44. Y 44. Z 45. A 45. B 45. C 45. D 45. E 45. F 45. G 45. H 45. I 45. J 45. K 45. L 45. M 45. N 45. O 45. P 45. Q 45. R 45. S 45. T 45. U 45. V 45. W 45. X 45. Y 45. Z 46. A 46. B 46. C 46. D 46. E 46. F 46. G 46. H 46. I 46. J 46. K 46. L 46. M 46. N 46. O 46. P 46. Q 46. R 46. S 46. T 46. U 46. V 46. W 46. X 46. Y 46. Z 47. A 47. B 47. C 47. D 47. E 47. F 47. G 47. H 47. I 47. J 47. K 47. L 47. M 47. N 47. O 47. P 47. Q 47. R 47. S 47. T 47. U 47. V 47. W 47. X 47. Y 47. Z 48. A 48. B 48. C 48. D 48. E 48. F 48. G 48. H 48. I 48. J 48. K 48. L 48. M 48. N 48. O 48. P 48. Q 48. R 48. S 48. T 48. U 48. V 48. W 48. X 48. Y 48. Z 49. A 49. B 49. C 49. D 49. E 49. F 49. G 49. H 49. I 49. J 49. K 49. L 49. M 49. N 49. O 49. P 49. Q 49. R 49. S 49. T 49. U 49. V 49. W 49. X 49. Y 49. Z 50. A 50. B 50. C 50. D 50. E 50. F 50. G 50. H 50. I 50. J 50. K 50. L 50. M 50. N 50. O 50. P 50. Q 50. R 50. S 50. T 50. U 50. V 50. W 50. X 50. Y 50. Z 51. A 51. B 51. C 51. D 51. E 51. F 51. G 51. H 51. I 51. J 51. K 51. L 51. M 51. N 51. O 51. P 51. Q 51. R 51. S 51. T 51. U 51. V 51. W 51. X 51. Y 51. Z 52. A 52. B 52. C 52. D 52. E 52. F 52. G 52. H 52. I 52. J 52. K 52. L 52. M 52. N 52. O 52. P 52. Q 52. R 52. S 52. T 52. U 52. V 52. W 52. X 52. Y 52. Z 53. A 53. B 53. C 53. D 53. E 53. F 53. G 53. H 53. I 53. J 53. K 53. L 53. M 53. N 53. O 53. P 53. Q 53. R 53. S 53. T 53. U 53. V 53. W 53. X 53. Y 53. Z 54. A 54. B 54. C 54. D 54. E 54. F 54. G 54. H 54. I 54. J 54. K 54. L 54. M 54. N 54. O 54. P 54. Q 54. R 54. S 54. T 54. U 54. V 54. W 54. X 54. Y 54. Z 55. A 55. B 55. C 55. D 55. E 55. F 55. G 55. H 55. I 55. J 55. K 55. L 55. M 55. N 55. O 55. P 55. Q 55. R 55. S 55. T 55. U 55. V 55. W 55. X 55. Y 55. Z 56. A 56. B 56. C 56. D 56. E 56. F 56. G 56. H 56. I 56. J 56. K 56. L 56. M 56. N 56. O 56. P 56. Q 56. R 56. S 56. T 56. U 56. V 56. W 56. X 56. Y 56. Z 57. A 57. B 57. C 57. D 57. E 57. F 57. G 57. H 57. I 57. J 57. K 57. L 57. M 57. N 57. O 57. P 57. Q 57. R 57. S 57. T 57. U 57. V 57. W 57. X 57. Y 57. Z 58. A 58. B 58. C 58. D 58. E 58. F 58. G 58. H 58. I 58. J 58. K 58. L 58. M 58. N 58. O 58. P 58. Q 58. R 58. S 58. T 58. U 58. V 58. W 58. X 58. Y 58. Z 59. A 59. B 59. C 59. D 59. E 59. F 59. G 59. H 59. I 59. J 59. K 59. L 59. M 59. N 59. O 59. P 59. Q 59. R 59. S 59. T 59. U 59. V 59. W 59. X 59. Y 59. Z 60. A 60. B 60. C 60. D 60. E 60. F 60. G 60. H 60. I 60. J 60. K 60. L 60. M 60. N 60. O 60. P 60. Q 60. R 60. S 60. T 60. U 60. V 60. W 60. X 60. Y 60. Z 61. A 61. B 61. C 61. D 61. E 61. F 61. G 61. H 61. I 61. J 61. K 61. L 61. M 61. N 61. O 61. P 61. Q 61. R 61. S 61. T 61. U 61. V 61. W 61. X 61. Y 61. Z 62. A 62. B 62. C 62. D 62. E 62. F 62. G 62. H 62. I 62. J 62. K 62. L 62. M 62. N 62. O 62. P 62. Q 62. R 62. S 62. T 62. U 62. V 62. W 62. X 62. Y 62. Z 63. A 63. B 63. C 63. D 63. E 63. F 63. G 63. H 63. I 63. J 63. K 63. L 63. M 63. N 63. O 63. P 63. Q 63. R 63. S 63. T 63. U 63. V 63. W 63. X 63. Y 63. Z 64. A 64. B 64. C 64. D 64. E 64. F 64. G 64. H 64. I 64. J 64. K 64. L 64. M 64. N 64. O 64. P 64. Q 64. R 64. S 64. T 64. U 64. V 64. W 64. X 64. Y 64. Z 65. A 65. B 65. C 65. D 65. E 65. F 65. G 65. H 65. I 65. J 65. K 65. L 65. M 65. N 65. O 65. P 65. Q 65. R 65. S 65. T 65. U 65. V 65. W 65. X 65. Y 65. Z 66. A 66. B 66. C 66. D 66. E 66. F 66. G 66. H 66. I 66. J 66. K 66. L 66. M 66. N 66. O 66. P 66. Q 66. R 66. S 66. T 66. U 66. V 66. W 66. X 66. Y 66. Z 67. A 67. B 67. C 67. D 67. E 67. F 67. G 67. H 67. I 67. J 67. K 67. L 67. M 67. N 67. O 67. P 67. Q 67. R 67. S 67. T 67. U 67. V 67. W 67. X 67. Y 67. Z 68. A 68. B 68. C 68. D 68. E 68. F 68. G 68. H 68. I 68. J 68. K 68. L 68. M 68. N 68. O 68. P 68. Q 68. R 68. S 68. T 68. U 68. V 68. W 68. X 68. Y 68. Z 69. A 69. B 69. C 69. D 69. E 69. F 69. G 69. H 69. I 69. J 69. K 69. L 69. M 69. N 69. O 69. P 69. Q 69. R 69. S 69. T 69. U 69. V 69. W 69. X 69. Y 69. Z 70. A 70. B 70. C 70. D 70. E 70. F 70. G 70. H 70. I 70. J 70. K 70. L 70. M 70. N 70. O 70. P 70. Q 70. R 70. S 70. T 70. U 70. V 70. W 70. X 70. Y 70. Z 71. A 71. B 71. C 71. D 71. E 71. F 71. G 71. H 71. I 71. J 71. K 71. L 71. M 71. N 71. O 71. P 71. Q 71. R 71. S 71. T 71. U 71. V 71. W 71. X 71. Y 71. Z 72. A 72. B 72. C 72. D 72. E 72. F 72. G 72. H 72. I 72. J 72. K 72. L 72. M 72. N 72. O 72. P 72. Q 72. R 72. S 72. T 72. U 72. V 72. W 72. X 72. Y 72. Z 73. A 73. B 73. C 73. D 73. E 73. F 73. G 73. H 73. I 73. J 73. K 73. L 73. M 73. N 73. O 73. P 73. Q 73. R 73. S 73. T 73. U 73. V 73. W 73. X 73. Y 73. Z 74. A 74. B 74. C 74. D 74. E 74. F 74. G 74. H 74. I 74. J 74. K 74. L 74. M 74. N 74. O 74. P 74. Q 74. R 74. S 74. T 74. U 74. V 74. W 74. X 74. Y 74. Z 75. A 75. B 75. C 75. D 75. E 75. F 75. G 75. H 75. I 75. J 75. K 75. L 75. M 75. N 75. O 75. P 75. Q 75. R 75. S 75. T 75. U 75. V 75. W 75. X 75. Y 75. Z 76. A 76. B 76. C 76. D 76. E 76. F 76. G 76. H 76. I 76. J 76. K 76. L 76. M 76. N 76. O 76. P 76. Q 76. R 76. S 76. T 76. U 76. V 76. W 76. X 76. Y 76. Z 77. A 77. B 77. C 77. D 77. E 77. F 77. G 77. H 77. I 77. J 77. K 77. L 77. M 77. N 77. O 77. P 77. Q 77. R 77. S 77. T 77. U 77. V 77. W 77. X 77. Y 77. Z 78. A 78. B 78. C 78. D 78. E 78. F 78. G 78. H 78. I 78. J 78. K 78. L 78. M 78. N 78. O 78. P 78. Q 78. R 78. S 78. T 78. U 78. V 78. W 78. X 78. Y 78. Z 79. A 79. B 79. C 79. D 79. E 79. F 79. G 79. H 79. I 79. J 79. K 79. L 79. M 79. N 79. O 79. P 79. Q 79. R 79. S 79. T 79. U 79. V 79. W 79. X 79. Y 79. Z 80. A 80. B 80. C 80. D 80. E 80. F 80. G 80. H 80. I 80. J 80. K 80. L 80. M 80. N 80. O 80. P 80. Q 80. R 80. S 80. T 80. U 80. V 80. W 80. X 80. Y 80. Z 81. A 81. B 81. C 81. D 81. E 81. F 81. G 81. H 81. I 81. J 81. K 81. L 81. M 81. N 81. O 81. P 81. Q 81. R 81. S 81. T 81. U 81. V 81. W 81. X 81. Y 81. Z 82. A 82. B 82. C 82. D 82. E 82. F 82. G 82. H 82. I 82. J 82. K 82. L 82. M 82. N 82. O 82. P 82. Q 82. R 82. S 82. T 82. U 82. V 82. W 82. X 82. Y 82. Z 83. A 83. B 83. C 83. D 83. E 83. F 83. G 83. H 83. I 83. J 83. K 83. L 83. M 83. N 83. O 83. P 83. Q 83. R 83. S 83. T 83. U 83. V 83. W 83. X 83. Y 83. Z 84. A 84. B 84. C 84. D 84. E 84. F 84. G 84. H 84. I 84. J 84. K 84. L 84. M 84. N 84. O 84. P 84. Q 84. R 84. S 84. T 84. U 84. V 84. W 84. X 84. Y 84. Z 85. A 85. B 85. C 85. D 85. E 85. F 85. G 85. H 85. I 85. J 85. K 85. L 85. M 85. N 85. O 85. P 85. Q 85. R 85. S 85. T 85. U 85. V 85. W 85. X 85. Y 8																								

Appendix D

Meeting Agendas, Sign In Sheet and Handouts

STAPLE + E Evaluation Table													
	S (Social)	T (Technical)	A (Administrative)	P (Political)	L (Legal)	E (Economic)	E (Environmental)	PT					
Considerations →	Community Acceptance	Effect on Segment of Population	Technical Feasibility	Long-term Solution	Secondary Impacts	Staffing	Funding Allocated	Maintenance/Operations	Political Support	Local Champion	Public Support	State Authority	Existing Local Authority
Mitigation Actions ↓													
1.A Update the Master Plan to be consistent with the hazard area maps and implementation strategies developed in the MHMP every 10 years. Update Ordinances every 3 years.	5	4	3	3	3	3	3	2					28
1.B Annually review the County's & City's Emergency Operations Plan and identify needed plan updates	5	4	4	3	3	3	3	2					24
1.C Increase GIS and mapping capability to assess the risks in the County & City.	4	4	4	4	4	4	4	4					29
1.D Continue													

STAPLE + E Evaluation Table													
	S (Social)	T (Technical)	A (Administrative)	P (Political)	L (Legal)	E (Economic)	E (Environmental)	PT					
Considerations →	Community Acceptance	Effect on Segment of Population	Technical Feasibility	Long-term Solution	Secondary Impacts	Staffing	Funding Allocated	Maintenance/Operations	Political Support	Local Champion	Public Support	State Authority	Existing Local Authority
Mitigation Actions ↓													
planning and coordination with multi-agency/regional planning for multi-hazards (Applies to Goals 3-5).	3	3	3	3	3	3	3	3					22
1.E Integration of new information (i.e. LIDAR, USACE Canal Report) into County & City planning documents	4	4	4	3	3	4	4	3					25
2.A Utilize social media as a communication tool, as well as an education tool for hazard loss prevention.	5	5	4	4	5	4	4	4					31
2.B Conduct a minimum of one disaster exercise each year.	5	5	4	5	5	5	5	5					34
2.C Prepare, develop, & distribute	4	4	4	3	3	4	4	2					24

Appendix D

Meeting Agendas, Sign In Sheet and Handouts

STAPLE + E Evaluation Table										
	S (Social)	T (Technical)	A (Administrative)	P (Political)	L (Legal)	E (Economic)	E (Environmental)	PT		
Considerations →	Community Acceptance	Effect on Segment of Population	Technical Feasibility	Long-term Solution	Secondary Impacts	Staffing	Funding Allocated	Maintenance/ Operations	Political Support	Local Champion
Mitigation ↓	Public Support	Public Support	Public Support	Public Support	Public Support	Public Support	Public Support	Public Support	Public Support	Public Support
appropriate public information about hazard mitigation programs and projects at County and City-sponsored events										
3.A Pursue studies and formalized agreements with upstream agencies to minimize impacts of drought conditions, including aquifer water quality, ground stabilization, economic impacts and municipal/private well water supply.	5	4	4	5	5	4				27
3.B Encourage public participation in										

STAPLE + E Evaluation Table										
	S (Social)	T (Technical)	A (Administrative)	P (Political)	L (Legal)	E (Economic)	E (Environmental)	PT		
Considerations →	Community Acceptance	Effect on Segment of Population	Technical Feasibility	Long-term Solution	Secondary Impacts	Staffing	Funding Allocated	Maintenance/ Operations	Political Support	Local Champion
Mitigation ↓	Public Support	Public Support	Public Support	Public Support	Public Support	Public Support	Public Support	Public Support	Public Support	Public Support
drought strategies through public information programs on water conservation and drought resistant landscaping and through building code ordinances.	5	4	4	3	4	3				26
4.A Continue to enforce the International Building Code (IBC) provisions pertaining to grading and construction relative to seismic hazards. Update County Codes to IBC 2012 when it is released.	5	5	4	5	5	5				34
4.B Implement an Unreinforced Masonry (URM) building program that determines the structural safety of critical	5	5	4	5	5	5				34

Appendix D

Meeting Agendas, Sign In Sheet and Handouts

STAPLE + E Evaluation Table																									
		S	T	A	P	L	E			E			PT												
		(Social)	(Technical)	(Administrative)	(Political)	(Legal)	(Economic)			(Environmental)															
Consideration →		Community Acceptance	Effect on Segment of Population	Technical Feasibility	Long-term Solution	Secondary Impacts	Staffing	Funding Allocated	Maintenance Operations	Political Support	Local Champion	Public Support	State Authority	Existing Local Authority	Potential Legal Challenge	Benefits of Action	Cost of Action	Contributes to Economic Goals	Outside Funding Required	Effect on Land Water	Effect on Endangered Species	Effect on HAZMAT/Waste Sites	Consistent with Native Habitat	Consistent with Local / Federal Laws	Priority Total
Mitigation ↓		facility and infrastructure, and retrofit buildings, if necessary																							
4.C. Implement an Unreinforced Masonry (URM) building program that determines the structural safety of existing building inventory, and retrofit buildings, if necessary.		5	3	2	3								5				3				3				24
5.A. Improve communications, collaboration and integration among stakeholders and promote awareness of epidemic threats.		3	3	2	1								2				2				2				15
5.B. Create & implement a training and exercise program relative to																									

STAPLE + E Evaluation Table																								
		S	T	A	P	L	E		E				P											
		(Social)	(Technical)	(Administrative)	(Political)	(Legal)	(Economic)		(Environmental)															
Considerations	Mitigation Actions	Community Acceptance	Effect on Segment of Population	Technical Feasibility	Long-term Solution	Secondary Impacts	Staffing	Funding Allocated	Maintenance Operations	Political Support	Local Champion	Public Support	State Authority	Existing Local Authority	Potential Legal Challenge	Benefits of Action	Cost of Action	Contribution to Economic Goals	Outside Funding Required	Effect on Land/Water	Effect on Endangered Species	Effect on HAZMAT/Waste Sites	Consistent with Native Habitat	Consistent with Local/Federal Laws
epidemics																								
5.A Review and update flood plans that would include coordination with adjacent counties, cities, and special districts supporting a regional approach to flood control.		2	2				1			2			1				1				2			11
6.B Install new flood facilities including upgrade of the existing storm drain system to current standards including culverts and channel improvements.		4	4				4			5			4				5				5			31
6.C Protect and enhance existing water conveyance structures, storage, and		5	4				4			3			3				4				2			25

Appendix D

Meeting Agendas, Sign In Sheet and Handouts

STAPLE + E Evaluation Table											
	S	T	A	P	L	E	E	PT			
	(Social)	(Technical)	(Administrative)	(Political)	(Legal)	(Economic)	(Environmental)				
Considerations →	Community Acceptance	Effect on Segment of Population	Technical Feasibility	Long-term Solution	Secondary Impacts	Staffing	Funding Allocated	Maintenance/ Operations	Political Support	Local Champion	Public Support
Mitigation Actions ↓	State Authority	Existing Local Authority	Potential Legal Challenge	Benefits of Action	Cost of Action	Contributors to Economic Costs	Outside Funding Required	Effect on Land/ Water	Effect on Endangered Species	Effect on HAZMAT/ Waste Sites	Consistent with Native Habitat
											Consistent with Local / Federal Laws
											Priority Total
treatment facilities to reduce impact from flood.											
6.D Formalize agreements to utilize federal lands to spread flood and precautionary release waters.	5	5	4	5	5	5		5			34
6. E. Land acquisition of repetitive loss structures.	1	1	1	1	1	1		1			7
6.F Improve natural waterways in County for drainage.	5	3	2	2	3	5		6			24
6.G Implement multiple diversion projects for flood reduction along the Canon River and canal system.	5	3	2	2	2	4		4			22
7.A In areas at risk to severe.											

STAPLE + E Evaluation Table											
	S	T	A	P	L	E	E	PT			
	(Social)	(Technical)	(Administrative)	(Political)	(Legal)	(Economic)	(Environmental)				
Considerations →	Community Acceptance	Effect on Segment of Population	Technical Feasibility	Long-term Solution	Secondary Impacts	Staffing	Funding Allocated	Maintenance/ Operations	Political Support	Local Champion	Public Support
Mitigation Actions ↓	State Authority	Existing Local Authority	Potential Legal Challenge	Benefits of Action	Cost of Action	Contributors to Economic Costs	Outside Funding Required	Effect on Land/ Water	Effect on Endangered Species	Effect on HAZMAT/ Waste Sites	Consistent with Native Habitat
											Consistent with Local / Federal Laws
											Priority Total
weather, retrofit public buildings to withstand snow loads and sever winds to prevent roof collapse/damage.	1	1	1	1	1	1		1			7
7.B Enhance shelter facilities to withstand severe weather events (structural, structural, etc.).	4	3	3	4	4	2		2			22
8.A Develop partnerships for a community based vegetation management program including chipping programs.	2	2	2	3	2	2		2			15
9.A Enforce zoning ordinances to reduce public health risks from hazardous materials releases.	5	5	3	4	5	3		3			28

Appendix D

Meeting Agendas, Sign In Sheet and Handouts

STAPLE + E Evaluation Table																							
	S	T	A	P	L	E	E	PT															
	(Social)	(Technical)	(Administrative)	(Political)	(Legal)	(Economic)	(Environmental)																
Considerations →	Community Acceptance	Effect on Segment of Population	Technical Feasibility	Long-term Solution	Secondary Impacts	Staffing	Funding Allocated	Maintenance Operations	Political Support	Local Champions	Public Support	State Authority	Existing Local Authority	Potential Legal Challenge	Benefits of Action	Cost of Action	Contributions to Economic Goals	Outside Funding Required	Effect on Land/Water	Effect on Endangered Species	Effect on HAZMAT/Waste Sites	Consistent with Native Habitat	Consistent with Local / Federal Laws
Mitigation ↓																							
10. A	1	1	1	1	1	1	1	1	1	1	1	1	1	1	1	1	1	1	1	1	1	1	
11. A	5	1	5	1	4	3	2	27															
12. A	1	1	1	1	1	1	1	1	1	1	1	1	1	1	1	1	1	1	1	1	1	1	

STAPLE + E Evaluation Table																								
		S	T	A	P	L	E	E											PT					
		(Social)	(Technical)	(Administrative)	(Political)	(Legal)	(Economic)	(Environmental)																
Considerations →	Mitigation Actions ↓	Community Acceptance	Effect on Segment of Population	Technical Feasibility	Long-term Solution	Secondary Impacts	Staffing	Funding Allocated	Maintenance/Operations	Political Support	Local Champions	Public Support	State Authority	Existing Local Authority	Potential Legal Challenge	Benefits of Action	Cost of Action	Contributions to Economic Goals	Outside Funding Required	Effect on Land/Water	Effect on Endangered Species	Effect on HAZMAT/Waste Sites	Consistent with Native Habitat	Consistent with Local / Federal Laws
		Priority Total																						
		1.A. Update the Master Plan to be consistent with the hazard area maps and implementation strategies developed in the MSHMP every 10 years. Update Ordinances every 3 years.	5	→																			35	
		1.B. Annually review the County's & City's Emergency Operations Plan and identify needed plan updates.	5	→																			5	
		1.C. Increase GIS and mapping capability to assess the risks in the County & City.	4	→																			4	
		1.D. Continue																					26	

Meeting Agendas, Sign In Sheet and Handouts

STAPLE + E Evaluation Table									
	S (Social)	T (Technical)	A (Administrative)	P (Political)	L (Legal)	E (Economic)	E (Environmental)	PT	
Considerations → Mitigation Actions ↓	Community Acceptance Effect on Segment of Population	Technical Feasibility Long-term Solution Secondary Impacts	Funding Allocated Maintenance Operations	Political Support Local Champion Public Support	State Authority Existing Laws Authority Potential Legal Challenge	Benefits of Action Cost of Action Contributes to Economic Goals	Outside Funding Requested Effect on Land / Water Effect on Endangered Species Effect on HAZAR/Water Sites Consistent with Native Habitat Consistent with Local / Federal Laws		Priority Final
Planning and coordination with multi-agency/regional planning for multi-hazards (applies to Goals 2-9)	1	—	—	—	—			✓	1
1.E Integration of new information (i.e. LIDAR, USACE Canal Report) into County & City planning documents.	5	—	—	—	—			✓	5
2.A Utilize social media as a communication tool, as well as an education tool for hazard loss prevention	5	—	—	—	—			✓	5
2.B Conduct a minimum of one disaster exercise each year	5	—	—	—	—			✓	5
2.C Prepare, develop, & distribute	5	—	—	—	—			✓	5

	S	T	A	P	L	E	E	PT
	(Social)	(Technical)	(Administrative)	(Political)	(Legal)	(Economic)	(Environmental)	
Considerations → Mitigation Actions ↓	Community Assistance Effect on Segment of Population Technological Feasibility Long-term Solution Secondary Impacts Staffing Funding Allocated Maintenance / Operations Political Support Local Clump-on Public Support State Authority Existing Local Authority Potential Legal Challenge Benefit of Action Cost of Action Contributors to Economic Goals Outside Funding Required Effect on Land Water Impact on Endangered Species Effect on BAA/DMA/Waste Sites Consistent with Nonty Habitat Consistent with Local / Federal Laws							Priority Total
appropriate public information about fastest mitigation programs and projects at County and City-sponsored events.								
1.A Pursue studies and formalized agreements with upstream agencies to minimize impacts of drought conditions, including aquifer water quality, ground stabilization, economic impacts and municipal/private well water supply.	5							75
1.B Encourage public participation in	5							30

Appendix D

Meeting Agendas, Sign In Sheet and Handouts

STAPLE + E Evaluation Table										
	S	T	A	P	L	E	E			PT
	(Social)	(Technical)	(Administrative)	(Political)	(Legal)	(Economic)	(Environmental)			
Considerations →	Community Acceptance	Effect on Segment of Population	Technical Feasibility	Long-term Solution	Secondary Impacts	Staffing	Funding Allocated	Maintenance Operations	Political Support	Local Champion
Mitigation Actions ↓										
drought strategies through public information programs on water conservation and drought resistant landscaping and through building code ordinances.										
4.A Continue to enforce the International Building Code (IBC) provisions pertaining to grading and construction relative to seismic hazards. Update County Codes to IBC 2012 when it is revised.	5									5
4.B Implement an Unreinforced Masonry (URM) building program that determines the structural safety of critical	5									5

STAPLE + E Evaluation Table										
	S	T	A	P	L	E	E			PT
	(Social)	(Technical)	(Administrative)	(Political)	(Legal)	(Economic)	(Environmental)			
Considerations →	Community Acceptance	Effect on Segment of Population	Technical Feasibility	Long-term Solution	Secondary Impacts	Staffing	Funding Allocated	Maintenance Operations	Political Support	Local Champion
Mitigation Actions ↓										
facility and infrastructure, and retrofit buildings, if necessary.										
4.C. Implement an Unreinforced Masonry (URM) building program that determines the structural safety of existing building inventory, and retrofit buildings, if necessary.	5									5
5.A Improve communication, collaboration and integration among stakeholders and promote awareness of earthquake threats.	5									5
5.B Create & implement a training and exercise program relative to	5									5

Appendix D

Meeting Agendas, Sign In Sheet and Handouts

STAPLE + E Evaluation Table											
	S	T	A	P	L	E	E	E	PT		
	(Social)	(Technical)	(Administrative)	(Political)	(Legal)	(Economic)	(Environmental)				
Considerations →	Community Acceptance	Effect on Segment of Population	Technical Feasibility	Long-term Solutions	Secondary Impacts	Staffing	Funding Allocated	Maintenance/ Operations	Political Support	Local Champion	Public Support
Mitigation Actions ↓											
6.A Review and update flood plans that would include coordination with adjacent counties, cities, and special districts supporting a regional approach to flood control.	5										5
6.B Install new flood facilities including upgrade of the existing storm drain system to current standards including culverts and channel improvements.	5		3			5					4
6.C Protect and enhance existing water conveyance structures, ditches, and											28

STAPLE + E Evaluation Table											
	S	T	A	P	L	E	E	E	PT		
	(Social)	(Technical)	(Administrative)	(Political)	(Legal)	(Economic)	(Environmental)				
Considerations →	Community Acceptance	Effect on Segment of Population	Technical Feasibility	Long-term Solutions	Secondary Impacts	Staffing	Funding Allocated	Maintenance/ Operations	Political Support	Local Champion	Public Support
Mitigation Actions ↓											
6.A Review and update flood plans that would include coordination with adjacent counties, cities, and special districts supporting a regional approach to flood control.	5										5
6.B Install new flood facilities including upgrade of the existing storm drain system to current standards including culverts and channel improvements.	5		3			5					4
6.C Protect and enhance existing water conveyance structures, ditches, and											28

Meeting Agendas, Sign In Sheet and Handouts

[illegible][illegible]

Appendix D

Meeting Agendas, Sign In Sheet and Handouts

STAPLE + E Evaluation Table												
	S	T	A	P	L	E	E	PT				
	(Social)	(Technical)	(Administrative)	(Political)	(Legal)	(Economic)	(Environmental)					
Considerations →	Community Acceptance	Effect on Segment of Population	Technical Feasibility	Long-term Solution	Secondary Impacts	Shifting	Pending Allocated	Administrative Operations	Political Support	Local Champion	Public Support	State Authority
Mitigation Actions ↓												
1.A. Update the Master Plan to be consistent with the hazard area maps and implementation strategies developed in the MDDMP every 10 years. Update Ordinances every 3 years.	4	5	5	5	5	3	5					32
1.B. Annually review the County's & City's Emergency Operations Plan and identify needed plan updates.	3	5	5	5	5	5	5					33
1.C. Increase GIS and mapping capability to assess the risks in the County & City.	4	5	5	5	5	5	5					34
1.D. Continue												

STAPLE + E Evaluation Table												
	S	T	A	P	L	E	E	PT				
	(Social)	(Technical)	(Administrative)	(Political)	(Legal)	(Economic)	(Environmental)					
Considerations →	Community Acceptance	Effect on Segment of Population	Technical Feasibility	Long-term Solution	Secondary Impacts	Shifting	Pending Allocated	Administrative Operations	Political Support	Local Champion	Public Support	State Authority
Mitigation Actions ↓												
planning and coordination with multi-agency/regional planning for multi-hazard (applies to Goals 1-5).	4	5	5	5	5	5	5					34
1.E. Integration of new information (i.e. IHDAR, USACE Canal Report) into County & City planning documents.	5	5				5	5					20
2.A. Utilize social media as a communication tool, as well as an education tool for hazard loss prevention.	3	3	2/3	2	1	3	4					19
2.B. Conduct a minimum of one disaster exercise each year.	5	5	5	5	5	3	5					33
2.C. Prepare, develop, & distribute												

Meeting Agendas, Sign In Sheet and Handouts

	S	T	A	P	L	E	E	PT
	(Social)	(Technical)	(Administrative)	(Political)	(Legal)	(Economic)	(Environmental)	
Community Acceptance Effect on Segment of Population								
Technical Feasibility								
Long-term Solution								
Secondary Impacts								
Staffing								
Funding Allocated								
Maintenance/Operations								
Political Support								
Local Champion								
Public Support								
State Authority								
Existing Local Authority								
Potential Legal Challenge								
Benefit of Action								
Cost of Action								
Contributors to Economic Costs								
Outside Funding Required								
Effect on Land/Water								
Effect on Endangered Species								
Effect on RA/ZMA/TW state Status								
Cumulative with Native Habitat								
Cumulative with Local/Federal Laws								
Priority Total								
appropriate public information about hazard mitigation programs and projects at County and City-sponsored events.	2	2	2	2	2	2	1	13
J.A Pursue studies and formalized agreements with upstream agencies to minimize impacts of drought conditions, including aquifer water quality, ground stabilization, economic impacts and municipal/private well water supply.	5	5	3	5	3	5	5	30
J.D Encourage public participation in								

	S	T	A	P	L	E	E	P
	(Social)	(Technical)	(Administrative)	(Political)	(Legal)	(Economic)	(Environmental)	
Community Acceptance Effect on Segment of Population Technical Feasibility Long-term Solution Secondary Impacts Staffing Funding Allocated Maintenance Operations Political Support Local Champion Public Support State Authority Building Local Authority Potential Legal Challenge Benefits of Action Cost of Action Contributions to Economic Goals Outside Funding Requested Effects on Local Water Effect on Endangered Species Effect on HAQMA/TW water Silt Consistent with Native Habitat Consistent with Local / Federal Laws								
drought strategies through public information programs on water conservation and drought resistant landscaping and through building code ordinances.	5	5	5	5	5	5	5	30
4.A Continue to enforce the International Building Code (IBC) provisions pertaining to grading and construction relative to seismic hazards. Update County Codes to IBC 2012 when it is released.	3	5			5	5	5	20
4.B Implement as Curren/enforced Masonry (CUM) building program that determines the structural safety of critical	4	5	.	3	4	5	5	26

Meeting Agendas, Sign In Sheet and Handouts

STAPLE + E Evaluation Table									
	S (Social)	T (Technical)	A (Administrative)	P (Political)	L (Legal)	E (Economic)	E (Environmental)	PT	
Considerations →	Community Acceptance	Effect on Segment of Population							
Migration Actions ↓		Technical Feasibility							
		Long-term Solution							
		Secondary Impacts							
		Staffing							
		Funding Allocated							
		Maintenance Operations							
		Political Support							
		Local Champion							
		Public Support							
		State Authority							
		Exercising Local Authority							
		Potential Legal Challenge							
		Benefits of Action							
		Cost of Action							
		Contributions to Economic Goals							
		Outside Funding Required							
		Effect on Local Water							
		Effect on Endangered Species							
		Effect on HAZNAT/Water Status							
		Confliction with Native Habitat							
		Consistency with Land / Federal Laws							
		Priority Total							
facility and infrastructure, and retrofit buildings, if necessary.									
J.C. Implement an Unreinforced Masonry (URM) building program that determines the structural safety of existing building inventory, and retrofit buildings, if necessary.	3	5	3	4	4	5	5		25
J.A. Improve communication, collaboration and integration among stakeholders and promote awareness of epidemic threats	5			5	5	5	3		23
J.B. Create & implement a training and exercise program relative to	3	4			3	2	1		13

STAPLE + E Evaluation Table												
	S (Social)	T (Technical)	A (Administrative)	P (Political)	L (Legal)	E (Economic)		E (Environmental)			PT	
Considerations → Mitigation Actions ↓	Community Acceptance Effect on Segment of Population	Technical Feasibility	Long-term Solution Secondary Impacts	Swelling Funding Allocated	Measurables/Operations Political Support	Local Champion Public Support	State Authority Existing Local Authority	Potential Legal Challenge Benefits of Action	Cost of Action Contributions to Economic Goals	Outside Funding Required Effect on Land/Water	Effect on Endangered Species Effect on Hazardous/Waste Sites	Consistent with Native Habitat Consistent with Local/Federal Laws
epidemics												Property Total
6.A Review and update flood plans that would include coordination with adjacent counties, cities, and special districts supporting a regional approach to flood control.	5	5	5	5	5	5	5	5	5	5	5	35
6.B Install new flood facilities including upgrade of the existing storm drain system to current standards including culverts and channel improvements.	3	3	3	3	4	5	5	5	5	5	5	26
6.C Promote and enhance existing water conveyance structures, storage, and	5	5	3	3	3	3	5	5	5	5	5	24

Appendix D

Meeting Agendas, Sign In Sheet and Handouts

STAPLE + E Evaluation Table																									
		S	T	A	P	L	E	E														PT			
		(Social)	(Technical)	(Administrative)	(Political)	(Legal)	(Economic)	(Environmental)																	
Considerations	→	Community Acceptance	Effect on Segment of Population	Technical Feasibility	Long-term Solution	Secondary Impacts	Staffing	Funding Allocated	Maintenance Operations	Political Support	Local Champion	Public Support	State Authority	Existing Local Authority	Potential Legal Challenge	Benefit of Action	Cost of Action	Contributes to Economic Goals	Outside Funding Required	Effect on Land/Water	Effect on Endangered Species	Effect on HAZMAT/Waste Sites	Consistent with Native Habitat	Consistent with Local / Federal Laws	Priority Total
	↓	Mitigation Actions																							
treatment facilities to reduce impact from flood.																									
6.D Formalize agreements to utilize federal lands to spread flood and precautionary release waters.																									
6.E Land acquisition of repetitive loss structures.																									
6.F Improve natural waterways in County for drainage.																									
6.G Implement multiple diversion projects for flood reduction along the Carson River and canal system.		3	4	4	3	4	4														5			23	
7.A In areas at risk to severe																									

STAPLE + E Evaluation Table																								
		S (Social)	T (Technical)	A (Administrative)	P (Political)	L (Legal)	E (Economic)			E (Environmental)				PT										
Considerations →	Mitigation Actions ↓	Community Acceptance Effect on Segment of Population	Technical Feasibility	Long-term Solution	Secondary Impacts	Staffing	Funding Allocated	Maintenance/ Operations	Political Support	Local Champion	Public Support	State Authority	Existing Local Authority	Potential Legal Challenge	Benefit of Action	Cost of Action	Contributes to Economic Goals	Outside Funding Required	Effect on Land/ Water	Effect on Endangered Species	Effect on HAZMAT/Waste Sites	Consistent with Native Habitat	Consistent with Local / Federal Laws	Priority Total
weather, retrofit public buildings to withstand snow loads and severe winds to prevent roof collapse/damage.	7.B Enhance shelter facilities to withstand severe weather events (electrical, structural, etc.)	3	2			2			2			2			2		3			2				16
	8.A Develop partnerships for a community based vegetation management program including chipping programs	2	2			2			2			2			2		2			2				14
	9.A Enforce zoning ordinances to reduce public health risks from hazardous materials releases	5	5			1			2			3			3					5				24

Appendix D

Meeting Agendas, Sign In Sheet and Handouts

STAPLE + E Evaluation Table											
	S (Social)	T (Technical)	A (Administrative)	P (Political)	L (Legal)	E (Economic)	E (Environmental)	PT			
Considerations →	Community Acceptance	Effect on Segment of Population	Technical Feasibility	Long-term Solution	Secondary Impacts	Staffing	Funding Allocated	Maintenance/ Operations	Political Support	Local Champion	Public Support
Mitigation Actions ↓											
10. A	5	4	4	5	5	5		5			22
11. A	3	5	5	5	5	5		5			23
12. A	1	1	1	1	1	1		1			7

STAPLE + E Evaluation Table											
	S (Social)	T (Technical)	A (Administrative)	P (Political)	L (Legal)	E (Economic)	E (Environmental)	PT			
Considerations →	Community Acceptance	Effect on Segment of Population	Technical Feasibility	Long-term Solution	Secondary Impacts	Staffing	Funding Allocated	Maintenance/ Operations	Political Support	Local Champion	Public Support
Mitigation Actions ↓											
1.A. Update the Master Plan to be consistent with the hazard area maps and implementation strategies developed in the MHIMP every 10 years. Update Ordinances every 3 years.	2	4	3	5	5	5		3			26
1.B. Annually review the County's & City's Emergency Operations Plan and identify needed plan updates.	3	5	5	3	2	5		4			27
1.C. Increase GIS and mapping capability to assess the risks in the County & City.	4	4	5	4	5	5		4			27
1.D. Continue											

Appendix D

Meeting Agendas, Sign In Sheet and Handouts

STAPLE + E Evaluation Table												
	S (Social)	T (Technical)	A (Administrative)	P (Political)	L (Legal)	E (Economic)	E (Environmental)				PT	
Considerations →	Community Acceptance	Effect on Segment of Population	Technical Feasibility	Long-term Solution	Secondary Impacts	Staffing	Funding Allocated	Maintenance Operations	Political Support	Local Champions	Public Support	State Authority
Mitigation ↓	Existing Local Authority	Potential Legal Challenges	Benefit of Action	Cost of Action	Contributes to Economic Goals	Outside Funding Required	Effect on Local Water	Effect on Endangered Species	Effect on HAZMAT/Waste Sites	Consistent with Native Habitat	Consistent with Local / Federal Laws	Priority Total
planning and coordination with multi-agency/regional planning for multi-hazards applies to Goals 3-5.	1	3	5	5	3	4	3					24
1.E Integration of new information (i.e. LIDAR, USACE Canal Report) into County & City planning documents.	4	4	5	4	3	4	3					27
2.A Utilize social media as a communication tool, as well as an education tool for hazard loss prevention.	5	4	5	5	3	5	2					29
2.B Conduct a minimum of one disaster exercise each year.	4	4	3	2	5	3	2					23
2.C Prepare, develop, & distribute												

STAPLE + E Evaluation Table												
	S (Social)	T (Technical)	A (Administrative)	P (Political)	L (Legal)	E (Economic)	E (Environmental)	PT				
Considerations →	Community Acceptance	Effect on Segment of Population	Technical Feasibility	Long-term Solution	Secondary Impacts	Staffing	Funding Allocated	Maintenance Operations	Political Support	Local Champions	Public Support	State Authority
Mitigation ↓	Existing Local Authority	Potential Legal Challenges	Benefit of Action	Cost of Action	Contributes to Economic Goals	Outside Funding Required	Effect on Local Water	Effect on Endangered Species	Effect on HAZMAT/Water Sites	Consistent with Native Habitat	Consistent with Local / Federal Laws	Priority Total
appropriate public information about hazard mitigation programs and projects at County and City-sponsored events.	5	4	5	5	5	4	3					31
3.A Pursue studies and formalized agreements with upstream agencies to minimize impacts of drought conditions, including aquifer water quality, ground stabilization, economic impacts and municipal/private well water supply.	5	5	4	5	5	5	5					34
3.B Encourage public participation in												

Appendix D

Meeting Agendas, Sign In Sheet and Handouts

STAPLE + E Evaluation Table										
	S (Social)	T (Technical)	A (Administrative)	P (Political)	L (Legal)	E (Economic)	E (Environmental)	PT		
Considerations →	Community Acceptance	Effect on Segment of Population	Technical Feasibility	Long-term Solution	Secondary Impacts	Staffing	Funding Allocated	Maintenance Operations	Political Support	Local Champion
Mitigation Actions ↓										
Stronger strategies through public information programs on water conservation and drought resistant landscaping and through building code ordinances	5	4	5	5	4	4	5			32
4.A Continue to enforce the International Building Code (IBC) provisions pertaining to grading and construction relative to seismic hazards. Update County Codes to IBC 2012 when it is released.	3	4	4	3	5	5	4			28
4.B Implement an Unreinforced Masonry (URM) building program that determines the structural safety of critical										

STAPLE + E Evaluation Table										
	S (Social)	T (Technical)	A (Administrative)	P (Political)	L (Legal)	E (Economic)	E (Environmental)	PT		
Considerations →	Community Acceptance	Effect on Segment of Population	Technical Feasibility	Long-term Solution	Secondary Impacts	Staffing	Funding Allocated	Maintenance Operations	Political Support	Local Champion
Mitigation Actions ↓										
facility and infrastructure, and retrofit buildings, if necessary.	5	5	5	5	5	5	4			34
4.C Implement an Unreinforced Masonry (URM) building program that determines the structural safety of existing building inventory, and retrofit buildings, if necessary.	3	5	5	5	5	5	3			31
5.A Improve communication, collaboration and integration among stakeholders and promote awareness of epidemic threats	3	3	4	4	3	4	2			23
5.B Create & implement a training and exercise program relative to	3	3	4	3	3	3	2			21

Appendix D

Meeting Agendas, Sign In Sheet and Handouts

STAPLE + E Evaluation Table													
	S	T	A	P	L	E	E	PT					
	(Social)	(Technical)	(Administrative)	(Political)	(Legal)	(Economic)	(Environmental)						
Considerations →	Community Acceptance	Effect on Segment of Population	Technical Feasibility	Long-term Solution	Secondary Impacts	Staffing	Funding Allocated	Maintenance Operations	Political Support	Local Champion	Public Support	State Authority	Existing Local Authority
Mitigation ↓													
6.A Review and update flood plans that would include coordination with adjacent counties, cities, and special districts supporting a regional approach to flood control.	4	5	5	5	5	5	5						
6.B Install new flood facilities including upgrade of the existing storm drain system to current standards including culverts and channel improvements.	4	5	4	4	3	5	5						
6.C Protect and enhance existing water conveyance structures, storage, and													

STAPLE + E Evaluation Table													
	S	T	A	P	L	E	E	PT					
	(Social)	(Technical)	(Administrative)	(Political)	(Legal)	(Economic)	(Environmental)						
Considerations →	Community Acceptance	Effect on Segment of Population	Technical Feasibility	Long-term Solution	Secondary Impacts	Staffing	Funding Allocated	Maintenance Operations	Political Support	Local Champion	Public Support	State Authority	Existing Local Authority
Mitigation ↓													
Investment facilities to reduce impact from flood.	4	5	5	5	5	5	5						
6.D Formulate agreements to utilize federal lands to spread flood and precautionary release waters.	2	4	4	3	4	5	5						
6.E Land acquisition of respective loss structures.	4	3	3	5	5	4	3						
6.F Improve natural waterways in County for drainage.	3	5	4	4	3	5	5						
6.G Implement multiple diversion projects for flood reduction along the Carson River and canal system.	3	5	3	3	5	5	5						
7.A In areas at risk to severe													

Appendix D

Meeting Agendas, Sign In Sheet and Handouts

STAPLE + E Evaluation Table												
	S (Social)	T (Technical)	A (Administrative)	P (Political)	L (Legal)	E (Economic)		E (Environmental)		PT		
Considerations →	Continuity Acceptance	Effect on Segment of Population	Technical Feasibility	Long-term Solution	Secondary Impacts	Staffing	Funding Allocated	Maintenance/Operations	Political Support	Local Champion	Public Support	State Authority
Mitigation ↓												Existing Local Authority
												Potential Legal Challenge
												Benefit of Action
												Cost of Action
												Contributors to Economic Goals
												Outside Funding Required
												Effect on Land/ Water
												Effect on Endangered Species
												Effect on HAZMAT/Waste Sites
												Consistent with Native Habitat
												Consistent with Local / Federal Laws
												Priority Total
weather, retrofit public buildings to withstand snow loads and severe winds to prevent roof collapse/damage	2	2	2	2	2	4						16
7. In Enhance shelter facilities to withstand severe weather events (electrical, structural, etc.)	2	4	3	3	4	4						22
8.A Develop partnerships for a community based vegetation management program including chipping programs	3	3	2	2	2	3						30
9.A Enforce zoning ordinances to reduce public health risks from hazardous materials releases	4	3	4	5	5	3						29

STAPLE + E Evaluation Table												
	S (Social)	T (Technical)	A (Administrative)	P (Political)	L (Legal)	E (Economic)		E (Environmental)			PT	
Considerations →	Community Acceptance	Effect on Segment of Population	Technical Feasibility	Long-term Solution	Secondary Impacts	Staffing	Funding Allocated	Maintenance/ Operations	Political Support	Local Champion	Public Support	State Authority
Mitigation ↓	Effect on Segment of Population	Technical Feasibility	Long-term Solution	Secondary Impacts	Staffing	Funding Allocated	Maintenance/ Operations	Political Support	Local Champion	Public Support	State Authority	Existing Local Authority
												Potential Legal Challenge
												Benefit of Action
												Cost of Action
												Contributions to Economic Goals
												Outside Funding Required
												Effect on Land/ Water
												Effect on Endangered Species
												Effect on HAZMAT/Waste Sites
												Consistent with Native Habitat
												Consistent with Local / Federal Laws
												Priority Total
10. A	2	2	3	3	2	5	3					20
11. A	5	5	5	5	5	5	2					32
12. A	1	1	2	3	3	4	5					19

Appendix D

Meeting Agendas, Sign In Sheet and Handouts

STAPLE + E Evaluation Table										
	S (Social)	T (Technical)	A (Administrative)	P (Political)	L (Legal)	E (Economic)	E (Environmental)	PT		
Considerations →	Community Acceptance	Effect on Segment of Population	Technical Feasibility	Long-term Solution	Secondary Impacts	Staffing	Funding Allocated	Maintenance/ Operations	Political Support	Local Champions
Mitigation ↓	Public Support	State Authority	Existing Local Authority	Potential Legal Challenge	Benefit of Action	Cost of Action	Contributes to Economic Goals	Outside Funding Required	Effect on Land/ Water	Effect on Endangered Species
	Effect on Hazardous Waste Sites	Effect on Hazardous Waste Sites	Consistent with Native Habitat	Consistent with Local / Federal Laws	Priority Total					
1.A. Update the Master Plan to be consistent with the hazard area maps and implementation strategies developed in the MMDP every 10 years. Update Ordinances every 12 years.	2	1	2	4	4	2	3			18
1.B. Annually review the County's & City's Emergency Operations Plan and identify needed plan updates.	3	3	5	2	2	2	2			19
1.C. Increase GIS and mapping capability to assess the risks in the County & City.	2	4	3	1	1	4	4			19
1.D. Continue										

STAPLE + E Evaluation Table										
	S (Social)	T (Technical)	A (Administrative)	P (Political)	L (Legal)	E (Economic)	E (Environmental)	PT		
Considerations →	Community Acceptance	Effect on Segment of Population	Technical Feasibility	Long-term Solution	Secondary Impacts	Staffing	Funding Allocated	Maintenance/ Operations	Political Support	Local Champions
Mitigation ↓	Public Support	State Authority	Existing Local Authority	Potential Legal Challenge	Benefit of Action	Cost of Action	Contributes to Economic Goals	Outside Funding Required	Effect on Land/ Water	Effect on Endangered Species
	Effect on Hazardous Waste Sites	Effect on Hazardous Waste Sites	Consistent with Native Habitat	Consistent with Local / Federal Laws	Priority Total					
Planning and coordination with multi-jurisdictional planning for multi-hazards (applies to Goals 3.2).	3	3	3	4	3	2	4			23
1.E Integration of new information (i.e. LIDAR, USACE Canal Report) into County & City planning documents.	2	4	4	2	2	3	3			20
2.A Utilize social media as a communication tool, as well as an education tool for hazard loss prevention.	4	2	3	1	3	3	2			18
2.B Conduct a minimum of one disaster exercise each year.	4	3	3	2	2	3	2			19
2.C Prepare, develop, & distribute										

Appendix D

Meeting Agendas, Sign In Sheet and Handouts

STAPLE + E Evaluation Table										
	S	T	A	P	L	E	E	PT		
	(Social)	(Technical)	(Administrative)	(Political)	(Legal)	(Economic)	(Environmental)			
Considerations →	Community Acceptance	Effect on Segment of Population	Technical Feasibility	Long-term Solution	Secondary Impacts	Staffing	Funding Allocated	Maintenance/ Operations	Political Support	Local Champion
Mitigation ↓	Public Support	State Authority	Existing Local Authority	Potential Legal Challenges	Benefit of Action	Cost of Action	Contributors to Economic Goals	Outside Funding Required	Effect on Land/ Water	Effect on Endangered Species
appropriate public information about hazard mitigation programs and projects at County and City-sponsored events.	4	3	4	2	3	3		2		21
3.A Pursue studies and formalized agreements with upstream agencies to minimize impacts of drought conditions, including water quality, ground stabilization, economic impacts and municipal/private well water supply.	2	4	3	2	4	4		4		23
3.B Encourage public participation in										

STAPLE + E Evaluation Table										
	S	T	A	P	L	E	E	PT		
	(Social)	(Technical)	(Administrative)	(Political)	(Legal)	(Economic)	(Environmental)			
Considerations →	Community Acceptance	Effect on Segment of Population	Technical Feasibility	Long-term Solution	Secondary Impacts	Staffing	Funding Allocated	Maintenance/ Operations	Political Support	Local Champion
Mitigation ↓	Public Support	State Authority	Existing Local Authority	Potential Legal Challenges	Benefit of Action	Cost of Action	Contributors to Economic Goals	Outside Funding Required	Effect on Land/ Water	Effect on Endangered Species
drought strategies through public information programs on water conservation and drought resistant landscaping; and through building code ordinances.	4	3	4	2	2	3		3		21
4.A Continue to enforce the International Building Code (IBC) provisions pertaining to grading and construction relative to seismic hazards. Update County Codes to IBC 2012 when it is released.	2	4	4	2	4	5		4		25
4.B Implement an Unreinforced Masonry (URM) building program that determines the structural safety of critical										

Appendix D

Meeting Agendas, Sign In Sheet and Handouts

STAPLE + E Evaluation Table										
	S (Social)	T (Technical)	A (Administrative)	P (Political)	L (Legal)	E (Economic)		E (Environmental)		PT
Considerations →	Community Acceptance	Effect on Segment of Population	Technical Feasibility	Long-term Solution	Secondary Impacts	Staffing	Funding Allocated	Maintenance/Operations	Political Support	Local Champion
Mitigation ↓										
facility and infrastructure, and retrofit buildings, if necessary.	2	3	4	2	4	4		2		21
4.C. Implement an Unreinforced Masonry (URM) building program that determines the structural safety of existing buildings (inventory, and retrofit buildings, if necessary).	2	3	4	2	4	4		2		21
5.A. Improve communication, collaboration and integration among stakeholders and promote awareness of epidemic threats.	3	3	4	2	2	2		2		18
5.D. Create & implement a training and exercise program relative to:	4	4	4	4	3	3		3		25

STAPLE + E Evaluation Table										
	S (Social)	T (Technical)	A (Administrative)	P (Political)	L (Legal)	E (Economic)		E (Environmental)		PT
Considerations →	Community Acceptance	Effect on Segment of Population	Technical Feasibility	Long-term Solution	Secondary Impacts	Staffing	Funding Allocated	Maintenance/Operations	Political Support	Local Champion
Mitigation ↓										
epidemics										
6.A. Review and update flood plans that would include coordination with adjacent counties, cities, and special districts supporting a regional approach to flood control.	4	4	4	3	3	4		4		26
6.B. Install new flood facilities including upgrade of the existing storm drain system to current standards including culverts and channel improvements.	2	5	2	3	3	3		4		22
6.C. Protect and enhance existing water conveyance structures, storage, and										

Appendix D

Meeting Agendas, Sign In Sheet and Handouts

STAPLE + E Evaluation Table										
	S	T	A	P	L	E	E	PT		
	(Social)	(Technical)	(Administrative)	(Political)	(Legal)	(Economic)	(Environmental)			
Considerations →	Community Acceptance	Effect on Segment of Population	Technical Feasibility	Long-term Solution	Secondary Impacts	Staffing	Funding Allocated	Maintenance Operations	Political Support	Local Champion
Mitigation ↓	Public Support	State Authority	Existing Local Authority	Potential Legal Challenge	Benefit of Action	Cost of Action	Contributions to Economic Goals	Outside Funding Required	Effect on Endangered Species	Effect on HAZMAT/Waste Sites
									Consistent with Native Habitat	Consistent with Local / Federal Laws
										Priority Total
treatment facilities to reduce impact from flood.	1	4	2	3	3	3	4	20		
6.13 Formalize agreements to utilize federal lands to spread flood and precautionary release waters.	1	4	4	5	5	2	2	23		
6.1. Land acquisition of repetitive loss structures.	1	1	4	4	4	3	5	22		
6.2 Improve natural waterways in County for drainage.	1	4	4	4	4	2	5	24		
6.3 Implement multiple diversion projects for flood reduction along the Carson River and canal system.	3	4	3	3	3	4	4	24		
7. A. Is area at risk to severe										

STAPLE + E Evaluation Table										
	S	T	A	P	L	E	E	PT		
	(Social)	(Technical)	(Administrative)	(Political)	(Legal)	(Economic)	(Environmental)			
Considerations →	Community Acceptance	Effect on Segment of Population	Technical Feasibility	Long-term Solution	Secondary Impacts	Staffing	Funding Allocated	Maintenance Operations	Political Support	Local Champion
Mitigation ↓	Public Support	State Authority	Existing Local Authority	Potential Legal Challenge	Benefit of Action	Cost of Action	Contributions to Economic Goals	Outside Funding Required	Effect on Endangered Species	Effect on HAZMAT/Waste Sites
									Consistent with Native Habitat	Consistent with Local / Federal Laws
										Priority Total
weather, retrofit public buildings to withstand snow loads and never winds to prevent roof collapse/damage.	2	4	3	2	4	4	3	22		
7.18 Enhance shelter facilities to withstand severe weather events (electrical, structural, etc.)	3	4	3	2	3	3	2	20		
8. A Develop partnership for a community based vegetation management program including chipping program.	4	2	3	1	1	3	4	18		
9. A Enforce zoning ordinances to reduce public health risks from hazardous materials releases.	3	3	5	5	5	3	4	28		

Appendix D

Meeting Agendas, Sign In Sheet and Handouts

STAPLE + E Evaluation Table									
	S	T	A	P	L	E	E		PT
	(Social)	(Technical)	(Administrative)	(Political)	(Legal)	(Economic)	(Environmental)		
Considerations →	Community Acceptance	Technical Feasibility	Staffing	Political Support	State Authority	Benefit of Action	Effect on Endangered Species		
Mitigation ↓	Effect on Segment of Population	Long-term Solution	Funding Allocated	Local Champion	Existing Local Authority	Cost of Action	Effect on Land/Water		
10. A									
11. A									
12. A									

STAPLE + E Evaluation Table									
	S	T	A	P	L	E	E		PT
	(Social)	(Technical)	(Administrative)	(Political)	(Legal)	(Economic)	(Environmental)		
Considerations →	Community Acceptance	Technical Feasibility	Staffing	Political Support	State Authority	Benefit of Action	Effect on Endangered Species		
Mitigation ↓	Effect on Segment of Population	Long-term Solution	Funding Allocated	Local Champion	Existing Local Authority	Cost of Action	Effect on Land/Water		
1.A. Update the Master Plan to be consistent with the hazard area maps and implementation strategies developed in the MHMP every 10 years. Update Ordinances every 3 years.	2	2	2	2	2	2	2		14
1.B. Annually review the County's & City's Emergency Operations Plan and identify needed plan updates.	2	4	4	4	4	3	3		24
1.C. Increase GIS and mapping capability to assess the risks in the County & City.	2	3	3	3	3	2	1		19
1.D. Continue									

Appendix D

Meeting Agendas, Sign In Sheet and Handouts

STAPLE + E Evaluation Table									
	S (Social)	T (Technical)	A (Administrative)	P (Political)	L (Legal)	E (Economic)	E (Environmental)	PT	
Considerations →	Community Acceptance	Effect on Segment of Population	Technical Feasibility	Long-term Solution	Secondary Impacts	Staffing	Funding Allocated	Maintenance/Operations	Political Support
Mitigation ↓	Local Champion	Public Support	State Authority	Existing Local Authority	Potential Legal Challenge	Benefit of Action	Cost of Action	Contribution to Economic Goals	Outside Funding Required
	Effect on Endangered Species	Effect on HAZMAT/Water Sites	Consistent with Native Habitat	Consistent with Local / Federal Laws	Priority Total				
planning and coordination with multi-agency/regional planning for multi-hazardity (applies to Goals 1-5)	5	5	5	5	5	5	5		35
1.E Integration of new information (i.e. IEDAR, UNACE, Canal Report) into County & City planning documents	1	4	2	2	2	2	4		17
2.A Utilize social media as a communication tool, as well as an education tool for hazard loss prevention.	5	5	5	5	5	5	5		35
2.B Conduct a minimum of one disaster exercise each year.	1	3	4	4	4	1	1		18
2.C Prepare, develop, & distribute	3	1	2	4	2	1	2		15

STAPLE + E Evaluation Table									
	S (Social)	T (Technical)	A (Administrative)	P (Political)	L (Legal)	E (Economic)	E (Environmental)	PT	
Considerations →	Community Acceptance	Effect on Segment of Population	Technical Feasibility	Long-term Solution	Secondary Impacts	Staffing	Funding Allocated	Maintenance/Operations	Political Support
Mitigation ↓	Local Champion	Public Support	State Authority	Existing Local Authority	Potential Legal Challenge	Benefit of Action	Cost of Action	Contribution to Economic Goals	Outside Funding Required
	Effect on Endangered Species	Effect on HAZMAT/Water Sites	Consistent with Native Habitat	Consistent with Local / Federal Laws	Priority Total				
appropriate public information about hazard mitigation programs and projects at County and City-sponsored events									
3.A Perform studies and formalized agreements with upstream agencies to minimize impacts of drought conditions, including aquifer water quality, ground stabilization, economic impacts and municipal/private well water supply.	5	2	3	5	2	4	5		26
3.B Encourage public participation in									

Appendix D

Meeting Agendas, Sign In Sheet and Handouts

STAPLE + E Evaluation Table										
	S (Social)	T (Technical)	A (Administrative)	P (Political)	L (Legal)	E (Economic)	E (Environmental)	PT		
Considerations →	Community Acceptance	Effect on Segment of Population	Technical Feasibility	Long-term Solution	Secondary Impacts	Staffing	Funding Allocated	Maintenance/Operations	Political Support	Local Champion
Mitigation ↓	Public Support	State Authority	Existing Local Authority	Potential Legal Challenge	Benefit of Action	Cost of Action	Contributions to Economic Goals	Outside Funding Required	Effect on Land/ Water	Effect on Endangered Species
									Effect on HAZMAT/Waste Sites	Consistent with Native Habitat
									Consistent with Local / Federal Laws	Priority Total
drought strategies through public information programs on water conservation and drought resistant landscaping and through building code enforcement.	5	4	2	4	2	2		4		23
4.A Continue to enforce the International Building Code (IBC) provisions pertaining to grading and construction relative to seismic hazards. Update County Codes to IBC 2012 when it is released.	2	4	2	2	4	2		2		18
4.B Implement an Unreinforced Masonry (URM) building program that determines the structural safety of critical	2	2	2	2	2	2		2		14

STAPLE + E Evaluation Table										
	S (Social)	T (Technical)	A (Administrative)	P (Political)	L (Legal)	E (Economic)	E (Environmental)	PT		
Considerations →	Community Acceptance	Effect on Segment of Population	Technical Feasibility	Long-term Solution	Secondary Impacts	Staffing	Funding Allocated	Maintenance/Operations	Political Support	Local Champion
Mitigation ↓	Public Support	State Authority	Existing Local Authority	Potential Legal Challenge	Benefit of Action	Cost of Action	Contributions to Economic Goals	Outside Funding Required	Effect on Land/ Water	Effect on Endangered Species
									Effect on HAZMAT/Waste Sites	Consistent with Native Habitat
									Consistent with Local / Federal Laws	Priority Total
facility and infrastructure, and retrofit buildings, if necessary.										
4.c. Implement an Unreinforced Masonry (URM) building program that determines the structural safety of existing building inventory, and retrofit buildings, if necessary.	2	3	2	2	2	3		2		16
5.A Improve communication, collaboration and integration among stakeholders and promote awareness of epidemic threats.	3	1	1	3	1	1		1		11
5.B Create & implement a training and exercise program relative to	3	3	3	3	3	3		3		21

Appendix D

Meeting Agendas, Sign In Sheet and Handouts

STAPLE + E Evaluation Table									
	S (Social)	T (Technical)	A (Administrative)	P (Political)	L (Legal)	E (Economic)	E (Environmental)	PT	
Considerations →	Community Acceptance	Effect on Segment of Population	Technical Feasibility	Long-term Solution	Secondary Impacts	Staffing	Funding Allocated	Maintenance Operations	Political Support
Mitigation ↓	Local Champions	Public Support	State Authority	Existing Local Authority	Potential Legal Challenge	Benefit of Action	Cost of Action	Contributions to Economic Goals	Outside Funding Required
	Effect on Local Water	Effect on Endangered Species	Effect on HAZMAT/Toxic Sites	Consistent with Native Habitat	Consistent with Local / Federal Laws	Priority Total			
epidemics									
6.A Review and update flood plans that would include coordination with adjacent counties, cities, and special districts supporting a regional approach to flood control.	3	3	3	3	3	3	3		21
6.B Install new flood facilities including upgrade of the existing storm drain system to current standards including E-towers and channel improvements.	3	1	1	2	3	1	3		14
6.C Protect and enhance existing water conveyance structures, storage, and	4	2	2	3	3	1	2		17

STAPLE + E Evaluation Table									
	S (Social)	T (Technical)	A (Administrative)	P (Political)	L (Legal)	E (Economic)	E (Environmental)	PT	
Considerations →	Community Acceptance	Effect on Segment of Population	Technical Feasibility	Long-term Solution	Secondary Impacts	Staffing	Funding Allocated	Maintenance Operations	Political Support
Mitigation ↓	Local Champions	Public Support	State Authority	Existing Local Authority	Potential Legal Challenge	Benefit of Action	Cost of Action	Contributions to Economic Goals	Outside Funding Required
	Effect on Local Water	Effect on Endangered Species	Effect on HAZMAT/Toxic Sites	Consistent with Native Habitat	Consistent with Local / Federal Laws	Priority Total			
treatment facilities to reduce impact from flood.									
6.D Formalize agreements to utilize federal funds to spread flood and precautionary release waters.	1	2	2	3	3	3	3		17
6.E Land acquisition of repetitive loss structures.	1	1	1	1	1	1	1		7
6.F Improve natural waterways in County for drainage.	2	2	2	4	2	3	3		18
6.G Implement multiple diversion projects for flood reduction along the Canon River and canal system.	2	2	2	2	2	2	2		14
7.A An area at risk to severe									

Meeting Agendas, Sign In Sheet and Handouts

STAPLE + E Evaluation Table																									
		S (Social)	T (Technical)	A (Administrative)	P (Political)	L (Legal)	E (Economic)		E (Environmental)				PT												
Considerations →		Community Acceptance	Effect on Segment of Population	Technical Feasibility	Long-term Solution	Secondary Impacts	Staffing	Funding Allocated	Maintenance/Operations	Political Support	Local Champion	Public Support	State Authority	Existing Local Authority	Potential Legal Challenge	Benefit of Action	Cost of Action	Contribute to Economic Goals	Outside Funding Required	Effect on Land Water	Effect on Endangered Species	Effect on HAZMAT/Waste Sites	Consistent with Native Habitat	Consistent with Local / Federal Laws	Priority Total
Mitigation Actions																									
weather, retrofit public buildings to withstand snow loads and severe winds to prevent roof collapse/damage		1		1						1				1				1			1			7	
7.B Enhance shelter facilities to withstand severe weather events (electrical, structural, etc.)		2		1				1		2				2			2				1			11	
8.A Develop partnerships for a community based vegetation management program including chipping programs		1		1				1			1			1			1				1			7	
9.A Enforce zoning ordinances to reduce public health risks from hazardous materials releases		2	2		2			2		2				2			2				2			14	

STAPLE + E Evaluation Table									
	S (Social)	T (Technical)	A (Administrative)	P (Political)	L (Legal)	E (Economic)	E (Environmental)		PT
Considerations ➡									
Mitigation Actions ⬇									
	Community Acceptance Effect on Segment of Population	Technical Feasibility Long-term Solution Secondary Impacts	Staffing Funding Allocated Minimizes / Operations	Political Support Local Champion Public Support	State Authority Existing Local Authority Potential Legal Challenge	Benefit of Action Cost of Action Contribution to Economic Goals Outside Funding Required	Effect on Local Water Effect on Endangered Species Effect on HABITAT/water Sites Consistent with Native Habitat Consistent with Local / Federal Laws		Overall Total
10. A	2	1	1	1	1	3	3		12
11. A	3	1	1	2	1	1	1		10
12. A	1	2	2	2	2	2	1		12

Appendix D

Meeting Agendas, Sign In Sheet and Handouts

STAPLE + E Evaluation Table											
	S (Social)	T (Technical)	A (Administrative)	P (Political)	L (Legal)	E (Economic)	E (Environmental)	PT			
Considerations →	Community Acceptance	Effect on Segment of Population	Technical Feasibility	Long-term Solution	Secondary Impacts	Staffing	Funding Allocated	Maintenance/ Operations	Political Support	Local Champion	Public Support
Mitigation Actions ↓						State Authority	Existing Local Authority	Potential Legal Challenge	Benefits of Action	Cost of Action	Contributors to Economic Goals
							Outside Funding Required	Effect on Land/ Water	Effect on Endangered Species	Effect on HAGAA/TW and Sites	Consistent with Native Habitat
											Consistent with Local / Federal Laws
											Properly Total
1.A. Update the Master Plan to be consistent with the hazard area maps and implementation strategies developed in the MIBMP every 10 years. Update Ordinances every 3 years.	2	3	4	3	1	2					15
1.B. Annually review the County's & City's Emergency Operations Plan and identify needed plan updates.	2	3	3	3	1	1					13
1.C. Increase GIS and mapping capability to assess the risks in the County & City.	1	4	2	2	2	3					14
1.D. Continue											

STAPLE + E Evaluation Table											
	S (Social)	T (Technical)	A (Administrative)	P (Political)	L (Legal)	E (Economic)		E (Environmental)		PT	
Considerations →	Community Acceptance	Effect on Segment of Population	Technical Feasibility	Long-term Solution	Secondary Impacts	Staffing	Funding Allocated	Maintenance Operations	Political Support	Local Champion	Public Support
Mitigation Actions ↓						State Authority	Existing Local Authority	Potential Legal Challenge	Benefits of Action	Cost of Action	Contributors to Economic Goals
									Outside Funding Required	Effect on Land/ Water	Effect on Endangered Species
										Effect on HAZMAT/Waste Sites	Compliance with Native Habitat
										Compliance with Local / Federal Laws	Residual Total
planning and coordination with multi-agency/regional planning for multi-hazards (applies to Goals 3-5)	2	4	3	3	2	2		0			16
1.E. Integration of new information (i.e. LIDAR, USACE Causal Report) into County & City planning documents	1	3	4	3	2	3		0			10
2.A Utilize social media as a communication tool, as well as an education tool for hazard loss prevention.	4	3	3	3	1	1		0			15
2.B Conduct a minimum of one disaster exercise each year.	3	4	4	4	2	2		1			20
2.C. Prepare, develop, & distribute											

Appendix D

Meeting Agendas, Sign In Sheet and Handouts

STAPLE + E Evaluation Table																									
		S	T	A	P	L	E	E		E		PT													
		(Social)	(Technical)	(Administrative)	(Political)	(Legal)	(Economic)	(Environmental)																	
Considerations →	Mitigation ↓	Community Acceptance	Effect on Segment of Population	Technical Feasibility	Long-term Solution	Boundary Impacts	Staffing	Funding Allocated	Maintenance Operations	Political Support	Local Change on	Public Support	State Authority	Existing Local Authority	Potential Legal Challenge	Benefits of Action	Cost of Action	Contributes to Economic Goals	Outside Funding Required	Effect on Local Water	Effect on Endangered Species	Effect on HAZMAT/Waste Sites	Consistent with Native Habitat	Consistent with Local / Federal Laws	Priority Total
		appropriate public information about hazard mitigation programs and projects at County and City-sponsored events	4	3	3	2	2	2	0	16															
		3.A Pursue studies and formalized agreements with upstream agencies to maintain impacts of drought conditions, including aquifer water quality; ground stabilization, economic impacts and municipal/private well water supply.	3	5	4	5	4	4	3	28															
		3.B Encourage public participation in																							

STAPLE + E Evaluation Table																									
		S	T	A	P	L	E	E											PT						
		(Social)	(Technical)	(Administrative)	(Political)	(Legal)	(Economic)	(Environmental)																	
Considerations →		Community Acceptance	Effect on Segment of Population	Technical Feasibility	Long-term Solution	Boundary Impacts	Staffing	Funding Allocated	Maintenance Operations	Political Support	Local Champion	Public Support	State Authority	Existing Local Authority	Potential Legal Challenge	Benefit of Action	Cost of Action	Contributes to Economic Goals	Outside Funding Required	Effect on Land Water	Effect on Endangered Species	Effect on HAZMAT/Waste Sites	Consistent with Native Habitat	Consistent with Local / Federal Laws	Priority Total
	Mitigation ↓	drought strategies through public information programs on water conservation and drought resistant landscaping and through building code ordinances.	4	4	3	3	2	2	3	21															
	4.A Continue to enforce the International Building Code (IBC) provisions pertaining to grading and construction relative to seismic hazards. Update County Codes to IBC 2012 when it is released.	4	4	4	4	3	4	3	26																
	4.B Implement an Unreinforced Masonry (URM) building program that determines the structural safety of critical																								

Appendix D

Meeting Agendas, Sign In Sheet and Handouts

STAPLE + E Evaluation Table										
	S (Social)	T (Technical)	A (Administrative)	P (Political)	L (Legal)	E (Economic)	E (Environmental)	PT		
Considerations →	Community Acceptance	Effect on Segment of Population	Technical Feasibility	Long-term Solution	Secondary Impacts	Staffing	Funding Allocated	Maintenance Operations	Political Support	Local Champion
Mitigation ↓	Public Support	State Authority	Existing Local Authority	Potential Legal Challenges	Benefit of Action	Cost of Action	Contributors to Economic Goals	Outside Funding Required	Effect on Land/ Water	Effect on Endangered Species
facility and infrastructure, and retrofit buildings, if necessary.	4	4	3	4	4	5			3	26
4.C. Implement an Unreinforced Masonry (URM) building program that determines the structural safety of existing building inventory, and retrofit buildings, if necessary.	5	4	4	4	4	5			3	29
5.A Improve communication, collaboration and integration among stakeholders and promote awareness of epidemic threats.	4	5	4	4	4	5			4	30
5.B Create & implement a training and exercise program relative to	5	4	3	3	2	4			0	21

STAPLE + E Evaluation Table										
	S (Social)	T (Technical)	A (Administrative)	P (Political)	L (Legal)	E (Economic)	E (Environmental)	PT		
Considerations →	Community Acceptance	Effect on Segment of Population	Technical Feasibility	Long-term Solution	Secondary Impacts	Staffing	Funding Allocated	Maintenance Operations	Political Support	Local Champion
Mitigation ↓	Public Support	State Authority	Existing Local Authority	Potential Legal Challenges	Benefit of Action	Cost of Action	Contributors to Economic Goals	Outside Funding Required	Effect on Land/ Water	Effect on Endangered Species
epidemics										
6.A Review and update flood plans that would include coordination with adjacent counties, cities, and special districts supporting a regional approach to flood control.	4	5	4	4	4	5			5	23
6.B Install new flood facilities including upgrade of the existing storm drain system to current standards including culverts and channel improvements.	4	4	4	3	2	5			5	27
6.C Protect and enhance existing water conveyance structures, storage, and										

Appendix D

Meeting Agendas, Sign In Sheet and Handouts

STAPLE + E Evaluation Table											
	S	T	A	P	L	E	E	PT			
	(Social)	(Technical)	(Administrative)	(Political)	(Legal)	(Economic)	(Environmental)				
Considerations →	Community Acceptance	Effect on Segment of Population	Technical Feasibility	Long-term Solution	Secondary Impacts	Staffing	Funding Allocated	Maintenance/ Operations	Political Support	Local Champion	Public Support
Mitigation Actions ↓	State Authority	Existing Local Authority	Potential Legal Challenge	Benefits of Action	Cost of Action	Contributes to Economic Goals	Outside Funding Required	Effect on Land/ Water	Effect on Endangered Species	Effect on HAZMAT/Waste Sites	Consistent with Native Habitat
Investment facilities to reduce impact from flood.	4	4	4	4	2	4		4			24
6.D Formalize agreements to utilize federal lands to spread flood and precautionary release waters.	5	4	4	5	5	4		5			32
6.E Land acquisition of repetitive loss structures.	4	2	2	4	3	4		1			20
6.F Improve natural waterways in County for drainage.	4	5	4	3	4	4		4			22
6.G Implement multiple diversion projects for flood reduction along the Carson River and canal system.	4	4	4	4	2	4		5			27
7.A. In areas at risk to severe											

STAPLE + E Evaluation Table											
	S	T	A	P	L	E	E	PT			
	(Social)	(Technical)	(Administrative)	(Political)	(Legal)	(Economic)	(Environmental)				
Considerations →	Community Acceptance	Effect on Segment of Population	Technical Feasibility	Long-term Solution	Secondary Impacts	Staffing	Funding Allocated	Maintenance/ Operations	Political Support	Local Champion	Public Support
Mitigation Actions ↓	State Authority	Existing Local Authority	Potential Legal Challenge	Benefits of Action	Cost of Action	Contributes to Economic Goals	Outside Funding Required	Effect on Land/ Water	Effect on Endangered Species	Effect on HAZMAT/Waste Sites	Consistent with Native Habitat
weather, retrofit public buildings to withstand snow loads and severe winds to prevent roof collapse/damage.	2	2	2	3	3	5		3			20
7.B Enhance shelter facilities to withstand severe weather events (electrical, structural, etc.).	2	4	4	2	2	4		2			20
8.A Develop partnerships for a community-based vegetation management program including chipping program.	1	3	3	2	1	2		1			13
9.A. Enforce zoning ordinances to reduce public health risks from hazardous materials releases.	4	5	4	2	2	3		5			25

Appendix D

Meeting Agendas, Sign In Sheet and Handouts

STAPLE + E Evaluation Table									
	S (Social)	T (Technical)	A (Administrative)	P (Political)	L (Legal)	E (Economic)	E (Environmental)	PT	
Considerations →	Community Acceptance	Technical Feasibility	Staffing	Political Support	State Authority	Benefit of Action	Effect on Endangered Species		
Mitigation ↓	Effect on Segment of Population	Long-term Solution	Funding Allocated	Local Champion	Existing Local Authority	Cost of Action	Effect on HAZMAT/Waste Sites		
		Secondary Impacts	Maintenance Operations	Public Support	Potential Legal Challenge	Contributes to Economic Goals	Consistent with Native Habitat		
						Outside Funding Required	Consistent with Local / Federal Laws		
10. A	1	4	2	2	2	5	5	21	
11. A	4	5	4	4	4	24	4	99	
12. A	1	1	1	1	1	2	4	11	

Highest
Score Highest

STAPLE + E Evaluation Table									
	S (Social)	T (Technical)	A (Administrative)	P (Political)	L (Legal)	E (Economic)	E (Environmental)	PT	
Considerations →	Community Acceptance	Technical Feasibility	Staffing	Political Support	State Authority	Benefit of Action	Effect on Endangered Species		
Mitigation ↓	Effect on Segment of Population	Long-term Solution	Funding Allocated	Local Champion	Existing Local Authority	Cost of Action	Effect on HAZMAT/Waste Sites		
		Secondary Impacts	Maintenance Operations	Public Support	Potential Legal Challenge	Contributes to Economic Goals	Consistent with Native Habitat		
						Outside Funding Required	Consistent with Local / Federal Laws		
1.A. Update the Master Plan to be consistent with the hazard area maps and implementation strategies developed in the MHMP every 10 years. Update Ordinances every 3 years.	4	4	4	4	4	4	4	28	
1.B. Annually review the County's & City's Emergency Operations Plan and identify needed plan updates.	4							28	
1.C. Increase GIS and mapping capability to assess the risks in the County & City.	4							28	
1.D. Continue									

Appendix D

Meeting Agendas, Sign In Sheet and Handouts

STAPLE + E Evaluation Table												
	S (Social)	T (Technical)	A (Administrative)	P (Political)	L (Legal)	E (Economic)	E (Environmental)	PT				
Considerations →	Community Acceptance	Effect on Segment of Population	Technical Feasibility	Long-term Solution	Secondary Impacts	Staffing	Funding Allocated	Maintenance/ Operations	Political Support	Local Champion	Public Support	State Authority
Mitigation Actions ↓												
planning and coordination with multi-agency/regional planning for multi-hazards (applies to Goals 3-5)	4											
1.B. Integration of new information (i.e. LIDAR, USACE Canal Report) into County & City planning documents	3											
2.A. Utilize social media as a communication tool, as well as an education tool for hazard loss prevention	3											
2.B. Conduct a minimum of one disaster exercise each year	4											
3.C. Prepare, develop, & distribute												

STAPLE + E Evaluation Table													
	S (Social)	T (Technical)	A (Administrative)	P (Political)	L (Legal)	E (Economic)		E (Environmental)		PT			
Considerations →	Community Acceptance	Effect on Segment of Population	Technical Feasibility	Long-term Solution	Secondary Impacts	Staffing	Funding Allocated	Maintenance/ Operations	Political Support	Local Champion	Public Support	State Authority	
Mitigation Actions ↓													
appropriate public information about hazard mitigation programs and projects at County and City-sponsored events	4												28
3.A Pursue studies and formalized agreements with upstream agencies to minimize impacts of drought conditions, including aquifer water quality, ground stabilization, economic impacts and municipal/private well water supply	5												35
3.B Encourage public participation in													

Appendix D

Meeting Agendas, Sign In Sheet and Handouts

STAPLE + E Evaluation Table										
	S (Social)	T (Technical)	A (Administrative)	P (Political)	L (Legal)	E (Economic)	E (Environmental)	PF		
Considerations →	Community Acceptance	Effect on Segment of Population	Technical Feasibility	Long-term Solution	Secondary Impacts	Staffing	Funding Allocation	Maintenance/ Operations	Political Support	Local Champion
Mitigation Actions ↓										
drought strategies through public information programs on water conservation and drought resistant landscaping and through building code refinements.	4	4	4	4	4	4	4			28
4.A Continue to enforce the International Building Code (IBC) provisions pertaining to grading and construction relative to seismic hazards. Update County Codes to IBC 2012 when it is released.	4	4	4	4	4	4	4			28
4.B Implement an Unreinforced Masonry (URM) building program that determines the structural safety of critical										

STAPLE + E Evaluation Table										
	S (Social)	T (Technical)	A (Administrative)	P (Political)	L (Legal)	E (Economic)	E (Environmental)	PF		
Considerations →	Community Acceptance	Effect on Segment of Population	Technical Feasibility	Long-term Solution	Secondary Impacts	Staffing	Funding Allocation	Maintenance/ Operations	Political Support	Local Champion
Mitigation Actions ↓										
Facility and infrastructure, and retrofit buildings, if necessary.	4	4	4	4	4	4	4			28
4.C Implement an Unreinforced Masonry (URM) building program that determines the structural safety of existing building inventory, and retrofit buildings, if necessary.	4	4	4	4	4	4	4			28
5.A Improve communication, collaboration and integration among stakeholders and promote awareness of epidemic threats.	4	4	4	4	4	4	4			28
5.B Create and implement a training and exercise program relative to:	3	3	3	3	3	3	3			24

Appendix D

Meeting Agendas, Sign In Sheet and Handouts

STAPLE + E Evaluation Table										
	S	T	A	P	L	E	E	PT		
	(Social)	(Technical)	(Administrative)	(Political)	(Legal)	(Economic)	(Environmental)			
Considerations →	Community Acceptance	Effect on Segment of Population	Technical Feasibility	Long-term Solution	Secondary Impacts	Staffing	Funding Allocation	Maintenance/ Operations	Political Support	Local Champion
Mitigation ↓	Public Support	State Authority	Existing Local Authority	Potential Legal Challenge	Benefits of Action	Cost of Action	Contributors to Economic Goals	Potential Funding Required	Effect on Land/ Water	Effect on Endangered Species
epidemics										
6. A Review and update flood plans that would include coordination with adjacent counties, cities, and special districts supporting a regional approach to flood control.	4	4	4	4	4	4	4			28
6. B Install new flood facilities including upgrades of the existing storm drain system to current standards including culverts and channel improvements.	4	4	4	4	4	4	4			28
6. C Protect and enhance existing water conveyance structures, storage, and										

STAPLE + E Evaluation Table										
	S	T	A	P	L	E	E	PT		
	(Social)	(Technical)	(Administrative)	(Political)	(Legal)	(Economic)	(Environmental)			
Considerations →	Community Acceptance	Effect on Segment of Population	Technical Feasibility	Long-term Solution	Secondary Impacts	Staffing	Funding Allocation	Maintenance/ Operations	Political Support	Local Champion
Mitigation ↓	Public Support	State Authority	Existing Local Authority	Potential Legal Challenge	Benefits of Action	Cost of Action	Contributors to Economic Goals	Potential Funding Required	Effect on Land/ Water	Effect on Endangered Species
treatment facilities to reduce impact from flood.	3	3	3	3	3	3	3			21
6.D Formalize agreements to utilize federal lands to spread flood and precautionary release waters.	3	3	3	3	3	3	3			21
6. E. Land acquisition of repetitive loss structures.	4	4	4	4	4	4	4			28
6.F Improve natural waterways in County for drainage.	4	4	4	4	4	4	4			28
6.G Implement multiple diversion projects for flood reduction along the Carson River and canal system.	4	4	4	4	4	4	4			28
7.A Is area at risk to rivers										

Appendix D

Meeting Agendas, Sign In Sheet and Handouts

STAPLE + E Evaluation Table											
	S (Social)	T (Technical)	A (Administrative)	P (Political)	L (Legal)	E (Economic)		E (Environmental)		PT	
Considerations →	Community Acceptance	Effect on Segment of Population	Technical Feasibility	Long-term Solutions	Secondary Impacts	Staffing	Funding Allocated	Maintenance/ Operations	Political Support	Local Champion	Public Support
Mitigation Actions ↓	Existing Local Authority	Potential Legal Challenge	Benefit of Action	Cost of Action	Contribution to Economic Goals	Outside Funding Required	Effect on Land & Water	Effect on Endangered Species	Effect on HAZMAT/Waste Sites	Consistent with Native Habitat	Consistent with Local / Federal Laws
weather, retrofit public buildings to withstand snow loads and severe winds to prevent roof-collapse damage	4	4	4	4	4	4	4	4			28
7.D Enhance shelter facilities to withstand severe weather events (electrical, structural, etc.)	5	5	5	5	5	5	5	5			35
8.A Develop partnerships for a community-based vegetation management program including chipping programs	4	4	4	4	4	4	4	4			28
9.A Enforce zoning ordinances to reduce public health risks from hazardous materials releases	5	5	5	5	5	5	5	5			35

STAPLE + E Evaluation Table											
	S (Social)	T (Technical)	A (Administrative)	P (Political)	L (Legal)	E (Economic)		E (Environmental)		PT	
Considerations →	Community Acceptance	Effect on Segment of Population	Technical Feasibility	Long-term Solutions	Secondary Impacts	Staffing	Funding Allocated	Maintenance/ Operations	Political Support	Local Champion	Public Support
Mitigation Actions ↓	Existing Local Authority	Potential Legal Challenge	Benefit of Action	Cost of Action	Contribution to Economic Goals	Outside Funding Required	Effect on Land & Water	Effect on Endangered Species	Effect on HAZMAT/Waste Sites	Consistent with Native Habitat	Consistent with Local / Federal Laws
10. A	3	3	3	3	3	3	3	3	3		21
11. A	3	3	3	3	3	3	3	3	3		21
12. A	2	2	2	2	2	2	2	2	2		14

Appendix D

Meeting Agendas, Sign In Sheet and Handouts

STAPLE + E Evaluation Table

	S	T	A	P	L	E	E	PT																
	(Social)	(Technical)	(Administrative)	(Political)	(Legal)	(Economic)	(Environmental)																	
<div>Considerations</div> <div>→</div>	Community Acceptance	Effect on Segment of Population	Technical Feasibility	Long-term Solution	Secondary Impacts	Staffing	Funding Allocated	Maintenance/ Operations	Political Support	Local Champion	Public Support	State Authority	Existing Local Authority	Potential Legal Challenge	Benefit of Action	Cost of Action	Contributors to Economic Goals	Outside Funding Required	Effect on Land/ Water	Effect on Endangered Species	Effect on HAZMAT/Waste Sites	Consistent with Native Habitat	Consistent with Local / Federal Laws	Priority Total
<div>Mitigation Actions</div> <div>↓</div>																								
1.A. Update the Master Plan to be consistent with the hazard area maps and implementation strategies developed in the MHMP every 10 years. Update Ordinances every 3 years.	3	4	5	5	5	3		1																26
1.B. Annually review the County's & City's Emergency Operations Plan and identify needed plan updates.	3	3	4	5	5	1		1																27
1.C. Increase GIS and mapping capability to assess the risks in the County & City.	4	4	5	5	5	3		1																27
1.D. Continue																								

STAPLE + E Evaluation Table

	S	T	A	P	L	E	E	PT
	(Social)	(Technical)	(Administrative)	(Political)	(Legal)	(Economic)	(Environmental)	
Considerations →	Community Acceptance	Effect on Segment of Population	Technical Feasibility	Long-term Solution	Secondary Impacts	Staffing	Funding Allocated	Maintenance/ Operations
Mitigation ↓	Political Support	Local Champion	Public Support	State Authority	Existing Local Authority	Potential Legal Challenge	Benefit of Action	Cost of Action
	Contributors to Economic Goals	Outside Funding Required	Effect on Land/ Water	Effect on Endangered Species	Effect on HAZMAT/Waste Sites	Consistent with Native Habitat	Consistent with Local / Federal Laws	Priority Total
planning and coordination with multi-agency/regional planning for multi-hazards (applies to Goals 1-5).	2	4	5	5	5	5	3	29
1.E Integration of new information (i.e. LIDAR, USACE Canal Report) into County & City planning documents.	3	5	5	5	4	4	4	30
2.A Utilize social media as a communication tool, as well as an education tool for hazard loss prevention.	4	3	4	4	4	4	1	24
2.B Conduct a minimum of one disaster exercise each year.	5	5	5	5	5	5	5	35
2.C. Prepare, develop, & distribute								

Appendix D

Meeting Agendas, Sign In Sheet and Handouts

STAPLE + E Evaluation Table										
	S (Social)	T (Technical)	A (Administrative)	P (Political)	L (Legal)	E (Economic)	E (Environmental)	PT		
Considerations →	Community Acceptance	Effect on Segment of Population								
→ Mitigation Actions	Technical Feasibility	Long-term Solution	Secondary Impacts	Staffing	Funding Allocated	Maintenance/ Operations	Political Support	Local Champion	Public Support	State Authority
							Existing Local Authority	Potential Legal Challenge	Benefit of Action	Cost of Action
							Contribution to Economic Goals	Outside Funding Required	Effect on Land/ Water	Effect on Endangered Species
							Effect on HAZMAT/ Waste Sites	Consistent with Native Habitat	Consistent with Local / Federal Laws	Priority Total
appropriate public information about hazard mitigation programs and projects in County and City-sponsored events.	4	3	4	4	5	4	1			21
3.A Pursue studies and formalized agreements with upstream agencies to minimize impacts of drought conditions including aquifer water quality, ground subsidence, economic impacts and multi-jurisdictional well water supply.	5	4	5	5	4	4	4			27
3.B Encourage public participation in										

STAPLE + E Evaluation Table										
	S (Social)	T (Technical)	A (Administrative)	P (Political)	L (Legal)	E (Economic)	E (Environmental)	PT		
Considerations →	Community Acceptance	Effect on Segment of Population								
→ Mitigation Actions	Technical Feasibility	Long-term Solution	Secondary Impacts	Staffing	Funding Allocated	Maintenance/ Operations	Political Support	Local Champion	Public Support	State Authority
							Existing Local Authority	Potential Legal Challenge	Benefit of Action	Cost of Action
							Contribution to Economic Goals	Outside Funding Required	Effect on Land/ Water	Effect on Endangered Species
							Effect on HAZMAT/ Waste Sites	Consistent with Native Habitat	Consistent with Local / Federal Laws	Priority Total
drought strategies through public information programs on water conservation and drought resistant landscaping and through building code ordinances.	5	4	4	4	3	5	5			30
4.A Continue to enforce the International Building Code (IBC) provisions pertaining to grading and construction relative to seismic hazards. Update County Codes to IBC 2012 when it is released.	5	5	4	4	4	4	4			30
4.B Implement an Unreinforced Masonry (URM) building program that determines the structural safety of critical										

Appendix D

Meeting Agendas, Sign In Sheet and Handouts

STAPLE + E Evaluation Table									
	S	T	A	P	L	E	E	PT	
	(Social)	(Technical)	(Administrative)	(Political)	(Legal)	(Economic)	(Environmental)		
Considerations →	Community Acceptance	Effect on Segment of Population	Technical Feasibility	Long-term Solution	Secondary Impacts	Staffing	Funding Allocated	Maintenance Operations	Political Support
Migration Actions ↓	Local Champion	Public Support	State Authority	Existing Local Authority	Potential Legal Challenge	Benefits of Action	Cost of Action	Contributes to Economic Goals	Outside Funding Requested
	Effect on Land/ Water	Effect on Endangered Species	Effect on HAZMAT/Waste Sites	Consistent with Native Habitat	Consistent with Local / Federal Laws	Priority Total			
facility and infrastructure, and retrofit buildings, if necessary.	3	3	4	4	4	5	2	25	
4.C. Implement an Unreinforced Masonry (URM) building program that determines the structural safety of existing building inventory, and retrofits buildings, if necessary.	3	3	3	3	3	3	2	20	
5.A. Improve communication, collaboration and integration among stakeholders and promote awareness of epidemic threats.	3	3	3	3	3	3	3	21	
5.B. Create & implement a training and exercise program relative to:	4	4	4	4	4	4	1	25	

STAPLE + E Evaluation Table									
	S	T	A	P	L	E	E	PT	
	(Social)	(Technical)	(Administrative)	(Political)	(Legal)	(Economic)	(Environmental)		
Considerations →	Community Acceptance	Effect on Segment of Population	Technical Feasibility	Long-term Solution	Secondary Impacts	Staffing	Funding Allocated	Maintenance Operations	Political Support
Migration Actions ↓	Local Champion	Public Support	State Authority	Existing Local Authority	Potential Legal Challenge	Benefits of Action	Cost of Action	Contributes to Economic Goals	Outside Funding Requested
	Effect on Land/ Water	Effect on Endangered Species	Effect on HAZMAT/Waste Sites	Consistent with Native Habitat	Consistent with Local / Federal Laws	Priority Total			
epidemics									
6.A Review and update flood plans that would include coordination with adjacent counties, cities, and special districts supporting a regional approach to flood control.	4	4	5	5	3	4	2	27	
6.B Install new flood facilities including upgrade of the existing storm drain system to current standards including culverts and channel improvements.	2	2	2	2	2	2	4	16	
6.C Protect and enhance existing water conveyance structures, storage, and	3	3	3	3	3	3	4	22	

Appendix D

Meeting Agendas, Sign In Sheet and Handouts

STAPLE + E Evaluation Table											
	S	T	A	P	L	E	E	E	PT		
	(Social)	(Technical)	(Administrative)	(Political)	(Legal)	(Economic)	(Environmental)				
Considerations →	Community Acceptance	Effect on Segment of Population	Technical Feasibility	Long-term Solution	Secondary Impacts	Staffing	Funding Allocated	Maintenance/ Operations	Political Support	Local Champions	Public Support
Mitigation ↓	State Authority	Existing Local Authority	Potential Legal Challenge	Benefits of Action	Cost of Action	Contributors to Economic Goals	Outside Funding Required	Effect on Land/ Water	Effect on Endangered Species	Effect on HAZMAT/ Waste Sites	Consistent with Native Habitat
											Consistent with Local / Federal Laws
											Priority Total
treatment facilities to reduce impact from flood.											
6.D Formulate agreements to utilize federal lands to spread flood and precautionary release waters.	4	4	4	5	4	4		4			29
6.E Land acquisition of negative loss structures.	4	3	2	2	1	4		4			20
6.F Improve natural waterways in County for drainage.	4	4	5	5	3	3		5			24
6.G Implement multiple diversion projects for flood reduction along the Carson River and canal system.	2	4	3	3	3	3		4			22
7.A Is area at risk to severe											

STAPLE + E Evaluation Table											
	S	T	A	P	L	E	E	E	PT		
	(Social)	(Technical)	(Administrative)	(Political)	(Legal)	(Economic)	(Environmental)				
Considerations →	Community Acceptance	Effect on Segment of Population	Technical Feasibility	Long-term Solution	Secondary Impacts	Staffing	Funding Allocated	Maintenance/ Operations	Political Support	Local Champions	Public Support
Mitigation ↓	State Authority	Existing Local Authority	Potential Legal Challenge	Benefits of Action	Cost of Action	Contributors to Economic Goals	Outside Funding Required	Effect on Land/ Water	Effect on Endangered Species	Effect on HAZMAT/ Waste Sites	Consistent with Native Habitat
											Consistent with Local / Federal Laws
											Priority Total
weather, retrofit public buildings to withstand snow loads and severe winds to prevent roof collapse/damage.	3	3	3	3	3	3		3			21
7.B Enhance shelter facilities to withstand severe weather events (structural, etc.).	3	4	5	5	5	5		4			31
8.A Develop partnerships for a community based vegetation management program including chipping program.	4	4	2	2	5	4		4			25
9.A Enforce zoning ordinances to reduce public health risks from hazardous materials releases.	4	5	5	5	5	4		4			32

Appendix D

Meeting Agendas, Sign In Sheet and Handouts

STAPLE + E Evaluation Table																							
		S (Social)	T (Technical)	A (Administrative)	P (Political)	L (Legal)	E (Economic)			E (Environmental)					PT								
Considerations →	Mitigation Actions ↓	Community Acceptance Effect on Segment of Population	Technical Feasibility Long-term Solution	Secondary Impacts	Staffing	Funding Allocated	Maintenance/ Operations	Political Support	Local Champion	Public Support	State Authority	Existing Local Authority	Potential Legal Challenge	Benefit of Action	Cost of Action	Contributes to Economic Goals	Outside Funding Required	Effect on Land/ Water	Effect on Endangered Species	Effect on HAZMAT/Waste Sites	Consistent with Native Habitat	Consistent with Local / Federal Laws	Priority Total
10. A		1	1		1			1			1					1				1			7
11. A		2	2			2			2			2				2				2			14
12. A		1	1		1				1		1				1					1			7

1 → 5

STAPLE + E Evaluation Table																								
	S (Social)	T (Technical)	A (Administrative)	P (Political)	L (Legal)	E (Economic)		E (Environmental)				PT												
Considerations →	Community Acceptance	Effect on Segment of Population	Technical Feasibility	Long-term Solution	Secondary Impacts	Staffing	Funding Allocated	Maintenance/ Operations	Political Support	Local Champion	Public Support	State Authority	Existing Local Authority	Potential Legal Challenge	Benefit of Action	Cost of Action	Contributions to Economic Goals	Outside Funding Required	Effect on Land/ Water	Effect on Endangered Species	Effect on HAZMAT/ Waste Sites	Consistent with Native Habitat	Consistent with Local / Federal Laws	Priority Total
Mitigation Actions ↓																								
1.A. Update the Master Plan to be consistent with the hazard area maps and implementation strategies developed in the MIBMP every 10 years. Update Ordinances every 3 years.	1	1	1	1	1	1	1	1	1	1	1	1	1	1	1	1	1	1	1	1	1	1	1	7
1.B. Annually review the County's & City's Emergency Operations Plan and identify needed plan updates.	1	1	1	1	1	1	1	1	1	1	1	1	1	1	1	1	1	1	1	1	1	1	1	7
1.C. Increase GIS and mapping capability to assess the risks in the County & City.	1	1	1	1	1	1	1	1	1	1	1	1	1	1	1	1	1	1	2	2	2	2	2	8
1.D. Continue																								

Appendix D

Meeting Agendas, Sign In Sheet and Handouts

STAPLE + E Evaluation Table									
	S	T	A	P	L	E	E	PT	
	(Social)	(Technical)	(Administrative)	(Political)	(Legal)	(Economic)	(Environmental)		
Considerations →	Community Acceptance	Effect on Segment of Population	Technical Feasibility	Long-term Solution	Secondary Impacts	Staffing	Funding Allocated	Maintenance/ Operations	Political Support
Mitigation Actions ↓	Local Champion	Public Support	State Authority	Existing Local Authority	Potential Legal Challenge	Benefit of Action	Cost of Action	Contribution to Economic Goals	Outside Funding Requested
	Effect on Endangered Species	Effect on HAZMAT/Waste Sites	Consistent with Native Habitat	Consistent with Local / Federal Laws	Priority Total				
planning and coordination with multi-agency/regional planning for multi-hazards applies to Goals 3-5)	1	1	7	1	1	1	1	7	
1.E Integration of new information (i.e. LIDAR, USACE Canal v. Report) into County & City planning documents	2	2	1	1	1	2	1	10	
2.A Utilize social media as a communications tool, as well as an education tool for hazard loss prevention	1	1	1	1	1	1	1	7	
2.B Conduct a minimum of one disaster exercise each year	1	2	3	1	1	2	2	17	
2.C Prepare, develop, & distribute									

STAPLE + E Evaluation Table									
	S	T	A	P	L	E	E	PT	
	(Social)	(Technical)	(Administrative)	(Political)	(Legal)	(Economic)	(Environmental)		
Considerations →	Community Acceptance	Effect on Segment of Population	Technical Feasibility	Long-term Solution	Secondary Impacts	Staffing	Funding Allocated	Maintenance/ Operations	Political Support
Mitigation Actions ↓	Local Champion	Public Support	State Authority	Existing Local Authority	Potential Legal Challenge	Benefit of Action	Cost of Action	Contribution to Economic Goals	Outside Funding Requested
	Effect on Endangered Species	Effect on HAZMAT/Waste Sites	Consistent with Native Habitat	Consistent with Local / Federal Laws	Priority Total				
appropriate public information about hazard mitigation programs and projects at County and City-sponsored events	1	1	1	1	1	1	1	7	
3.A Pursue studies and formalized agreements with upstream agencies to minimize impacts of drought conditions, including aquifer water quality, ground mobilization, economic impacts and municipal/private well water supply	1	3	2	3	1	1	3	14	
3.B Encourage public participation in									

Meeting Agendas, Sign In Sheet and Handouts

STABLE + E Evaluation Table								
	S (Social)	T (Technical)	A (Administrative)	P (Political)	L (Legal)	E (Economic)	E (Environmental)	PT
Considerations → Mitigation Actions ↓	Community Acceptance Effect on Segment of Population	Physical Feasibility Long-term Solution Secondary Impacts	Staffing Funding Allocation Maintenance Operations	Political Support Local Champion Public Support	State Authority Existing Local Authority Potential Legal Challenge	Benefit of Action Cost of Action Contributors to Economic Goals	Outside Funding Required Effect on Land/Water Effect on Endangered Species Effect on Hazardous Waste Sites Consistent with Native Habitat	Compliance with Local / Federal Laws Previous Total
drought strategies through public information programs on water conservation and drought resistant landscaping and through building code ordinances.	5	2	1	5	+2	1	4	20
4.A Continue to enforce the International Building Code (IBC) provisions pertaining to grouting and construction relative to seismic hazards. Update County Codes to IBC 2012 when it is released.	1	1	1	1	1	1	3	9
4.B Implement an Unreinforced Masonry (URM) building program that demonstrates the structural safety of critical	15		2	1	1	2	2	14

[illegible]

Appendix D

Meeting Agendas, Sign In Sheet and Handouts

STAPLE + E Evaluation Table										
	S (Social)	T (Technical)	A (Administrative)	P (Political)	L (Legal)	E (Economic)	E (Environmental)	PT		
Considerations →	Community Acceptance	Effect on Segment of Population	Technical Feasibility	Long-term Solution	Secondary Impacts	Staffing	Funding Allocated	Maintenance/Operations	Political Support	Local Champion
Mitigation Actions ↓										
6.A Review and update flood plans that would include coordination with adjacent counties, cities, and special districts supporting a regional approach to flood control.	1	2	1	3	1	2	5			14
6.B Install new flood facilities including upgrade of the existing storm drain system to current standards including culverts and channel improvements.	1	4	1	1	1	5	5			14
6.C Protect and enhance existing water conveyance structures, storage, and	1	3	1	1	1	4	5			16

STAPLE + E Evaluation Table										
	S (Social)	T (Technical)	A (Administrative)	P (Political)	L (Legal)	E (Economic)	E (Environmental)	PT		
Considerations →	Community Acceptance	Effect on Segment of Population	Technical Feasibility	Long-term Solution	Secondary Impacts	Staffing	Funding Allocated	Maintenance/Operations	Political Support	Local Champion
Mitigation Actions ↓										
6.D Formalize agreements to utilize federal lands to spread flood and precautionary release waters.	1	1	1	5	2	3	5			18
6.E Land acquisition of repetitive loss structures.	2	2	2	2	2	3	5			18
6.F Improve natural waterways in County for drainage.	1	3	2	1	1	4	5			17
6.G Implement multiple diversion projects for flood reduction along the Carson River and canal system.	1	4	2	1	1	5	5			19
7.A In areas at risk in severe										

Appendix D

Meeting Agendas, Sign In Sheet and Handouts

STAPLE + E Evaluation Table										
	S (Social)	T (Technical)	A (Administrative)	P (Political)	L (Legal)	E (Economic)		E (Environmental)		PT
Considerations →	Community Acceptance	Effect on Segment of Population	Technical Feasibility	Long-term Solution	Secondary Impacts	Staffing	Funding Allocated	Maintenance Operations	Political Support	Local Champion
Mitigation ↓	Public Support	State Authority	Existing Local Authority	Potential Legal Challenge	Benefits of Action	Cost of Action	Contributes to Economic Goals	Outside Funding Required	Effect on Land/ Water	Effect on Endangered Species
									Effect on HAZMAT Waste Sites	Consistent with Native Habitat
									Consistent with Local / Federal Laws	Priority Total
weather, retrofit public buildings to withstand severe winds and tornadoes to prevent roof collapse/damage.	1	2	1	1	1	3		2		11
7.B Enhance shelter facilities to withstand severe weather events (retrofit, electrical, etc.).	1	2	1	1	1	2		2		10
8.A Develop partnerships for a community-based vegetation management program including chipping program.	2	2	1	1	1	2		5		14
9.A Enforce existing ordinances to reduce public health risks from hazardous materials releases.	1	3	2	1	3	2		6		18

STAPLE + E Evaluation Table										
	S (Social)	T (Technical)	A (Administrative)	P (Political)	L (Legal)	E (Economic)		E (Environmental)		PT
Considerations →	Community Acceptance	Effect on Segment of Population	Technical Feasibility	Long-term Solution	Secondary Impacts	Staffing	Funding Allocated	Maintenance Operations	Political Support	Local Champion
Mitigation ↓	Public Support	State Authority	Existing Local Authority	Potential Legal Challenge	Benefits of Action	Cost of Action	Contributes to Economic Goals	Outside Funding Required	Effect on Land/ Water	Effect on Endangered Species
									Effect on HAZMAT Waste Sites	Consistent with Native Habitat
									Consistent with Local / Federal Laws	Priority Total
10. A RESTORATION	1	1	1	1	1	1		2		8
11. A TERRACE	1	2	1	1	1	2		4		12
12. A VOLCANOS	1	4	1	1	1	1		3		12

Appendix D Meeting Agendas, Sign In Sheet and Handouts

STAPLE + E Evaluation Table												
	S	T	A	P	L	E	E	PT				
	(Social)	(Technical)	(Administrative)	(Political)	(Legal)	(Economic)	(Environmental)					
Considerations →	Community Acceptance	Effect on Segment of Population	Technical Feasibility	Long-term Solution	Secondary Impacts	Staffing	Funding Allocated	Maintenance/ Operations	Political Support	Local Champion	Public Support	State Authority
Mitigation ↓	Existing Local Authority	Potential Legal Challenge	Benefit of Action	Cost of Action	Contributes to Economic Goals	Outside Funding Required	Effect on Land/ Water	Effect on Endangered Species	Effect on HAZMAT/ PW near Sites	Consistent with Native Habitat	Consistent with Local/ Federal Laws	Priority Total
1.A. Update the Master Plan to be consistent with the hazard area maps and implementation strategies developed in the MHMP every 10 years. Update Ordinances every 3 years.	5	3	5	4	5	3	3					28
1.B. Annually review the County's & City's Emergency Operations Plan and identify needed plan updates.	4	3	4	3	5	3	3					25
1.C. Increase GIS and mapping capability to assess the risks in the County & City.	5	5	4	4	5	5	4					32
1.D. Continue												

STAPLE + E Evaluation Table												
	S (Social)	T (Technical)	A (Administrative)	P (Political)	L (Legal)	E (Economic)	E (Environmental)			PT		
Considerations →	Community Acceptance	Effect on Segment of Population	Technical Feasibility	Long-term Solution	Secondary Impacts	Staffing	Funding Allocated	Maintenance Operations	Political Support	Local Champion	Public Support	State Authority
Mitigation ↓	Existing Local Authority	Potential Legal Challenge	Benefit of Action	Cost of Action	Contributes to Economic Goals	Outside Funding Required	Effect on Land/ Water	Effect on Endangered Species	Effect on HAZMAT/Water Sites	Consistent with Native Habitat	Consistent with Local / Federal Laws	Priority Total
planning and coordination with multi-agency/regional planning for multi-hazards (applies to Goals 2-9).	5	5	4	3	3	4	3					27
1.E. Integration of new information (i.e. LIDAR, USACE Canal Report) into County & City planning documents.	4	4	4	3	3	4	4					26
2.A. Utilize social media as a communication tool, as well as an education tool for hazard loss prevention.	5	4	3	3	3	5	3					26
2.B. Conduct a minimum of one disaster exercise each year.	5	5	5	5	5	5	5					35
2.C. Prepare, develop, & distribute												

Appendix D

Meeting Agendas, Sign In Sheet and Handouts

STAPLE + E Evaluation Table											
	S	T	A	P	L	E	E	PT			
	(Social)	(Technical)	(Administrative)	(Political)	(Legal)	(Economic)	(Environmental)				
Considerations →	Community Acceptance	Effect on Segment of Population	Technical Feasibility	Long-term Solution	Secondary Impacts	Staffing	Funding Allocated	Maintenance/ Operations	Political Support	Local Champion	Public Support
Mitigation Actions ↓											
appropriate public information about hazard mitigation programs and projects at County and City-sponsored events.	5	4	4	4	4	5					29
3.A Pursue studies and formalized agreements with upstream agencies to minimize impacts of drought conditions, including aquifer water quality, ground stabilization, economic impacts and municipal/private well water supply.	4	4	4	4	5	4					30
3.B Encourage public participation in											

STAPLE + E Evaluation Table											
	S	T	A	P	L	E	E	PT			
	(Social)	(Technical)	(Administrative)	(Political)	(Legal)	(Economic)	(Environmental)				
Considerations →	Community Acceptance	Effect on Segment of Population	Technical Feasibility	Long-term Solution	Secondary Impacts	Staffing	Funding Allocated	Maintenance/ Operations	Political Support	Local Champion	Public Support
Mitigation Actions ↓											
drought strategies through public information programs on water conservation and drought resistant landscaping and through building code ordinances.											
4.A Continue to enforce the International Building Code (IBC) provisions pertaining to grading and construction relative to seismic hazards. Update County Codes to IBC 2012 when it is released.											
4.B Implement an Unreinforced Masonry (URM) building program that determines the structural safety of critical											

Appendix D

Meeting Agendas, Sign In Sheet and Handouts

STAPLE + E Evaluation Table									
	S (Social)	T (Technical)	A (Administrative)	P (Political)	L (Legal)	E (Economic)	E (Environmental)	PT	
Considerations →	Community Acceptance	Effect on Segment of Population	Technical Feasibility	Long-term Solution	Secondary Impacts	Staffing	Funding Allocated	Maintenance/ Operations	Political Support
Mitigation ↓	Local Champion	Public Support	State Authority	Existing Local Authority	Potential Legal Challenge	Benefit of Action	Cost of Action	Contribution to Economic Goals	Outside Funding Required
	Effect on Land/ Water	Effect on Endangered Species	Effect on HAZMAT/ Waste Sites	Consistent with Native Habitat	Consistent with Local / Federal Laws	Priority Total			
Facility and infrastructure, and retrofit buildings, if necessary.	4	5	3	3	4	3	3	25	
A.C. Implement an Unreinforced Masonry (URM) building program that determines the structural safety of existing building inventory, and retrofit buildings, if necessary.	4	5	4	4	5	4	4	30	
3.A Improve communication, collaboration and integration among stakeholders and promote awareness of epidemic threats.	5	4	3	4	3	3	3	25	
3.B Create & implement a training and exercise program relative to	4	4	5	4	3	4	5	27	

STAPLE + E Evaluation Table									
	S (Social)	T (Technical)	A (Administrative)	P (Political)	L (Legal)	E (Economic)	E (Environmental)	PT	
Considerations →	Community Acceptance	Effect on Segment of Population	Technical Feasibility	Long-term Solution	Secondary Impacts	Staffing	Funding Allocated	Maintenance/ Operations	Political Support
Mitigation ↓	Local Champion	Public Support	State Authority	Existing Local Authority	Potential Legal Challenge	Benefit of Action	Cost of Action	Contribution to Economic Goals	Outside Funding Required
	Effect on Land/ Water	Effect on Endangered Species	Effect on HAZMAT/ Waste Sites	Consistent with Native Habitat	Consistent with Local / Federal Laws	Priority Total			
epidemics									
6.A Review and update flood plans that would include coordination with adjacent counties, cities, and special districts supporting a regional approach to flood control.	3	5	3	4	3	4	5	27	
6.B Install new flood facilities including upgrade of the existing storm drain system to current standards including culverts and channel improvements.	4	3	4	4	4	5	5	28	
6.C Protect and enhance existing water conveyance structures, storage, and	3	3	3	2	2	3	3	19	

Appendix D

Meeting Agendas, Sign In Sheet and Handouts

STAPLE + E Evaluation Table																									
		S	T	A	P	L	E			E			PT												
		(Social)	(Technical)	(Administrative)	(Political)	(Legal)	(Economic)			(Environmental)															
Considerations →	Mitigation Actions ↓	Community Acceptance	Effect on Segment of Population	Technical Feasibility	Long-term Solution	Secondary Impacts	Staffing	Funding Allocated	Maintenance/ Operations	Political Support	Local Champion	Public Support	State Authority	Existing Local Authority	Potential Legal Challenge	Benefits of Action	Cost of Action	Contribution to Economic Goals	Outside Funding Required	Effect on Land Water	Effect on Endangered Species	Effect on HAZMAT/Waste Sites	Consistent with Native Habitat	Consistent with Local / Federal Laws	Priority Total
treatment facilities to reduce impact from flood.																									
6.D Formalize agreements to utilize federal lands to spread flood and precautionary release waters.		5	5	3	5					5							5			5					35
6.E Land acquisition of repetitive loss structures.		3	3	3	3					3				4			3			3					22
6.F Improve natural waterways in County for drainage.		5	5	2	4					3				3			3			4					26
6.G Implement multiple diversion projects for flood reduction along the Carson River and canal systems.		4	5	4	3					4				5						5					30
7.A In event at risk to severe																									

STAPLE + E Evaluation Table																								
	S	T	A	P	L	E	E	PT																
	(Social)	(Technical)	(Administrative)	(Political)	(Legal)	(Economic)	(Environmental)																	
Considerations →	Community Acceptance	Effect on Segment of Population	Technical Feasibility	Long-term Solution	Secondary Impacts	Staffing	Funding Allocated	Maintenance/ Operations	Political Support	Local Champion	Public Support	State Authority	Existing Local Authority	Potential Legal Challenge	Benefits of Action	Cost of Action	Contribution to Economic Goals	Outside Funding Required	Effect on Land/ Water	Effect on Endangered Species	Effect on HAZMAT/Waste Sites	Consistent with Native Habitat	Consistent with Local / Federal Laws	Priority Total
Mitigation Actions ↓																								
weather, retrofit public buildings to withstand snow loads and severe winds to prevent roof collapse/damage	3	2	2	2	2											2			2					15
7.B Enhance shelter facilities to withstand severe weather events (electrical, structural, etc.)	4	4	4	4	4											4			4					28
8.A Develop partnerships for a community based vegetation management program including chipping programs	4	3	3	3	3											3			4					23
9.A Enforce zoning ordinances to reduce public health risks from hazardous materials releases	2	2	2	2	2											2			3					15

Appendix D

Meeting Agendas, Sign In Sheet and Handouts

STAPLE + E Evaluation Table																								
		S	T	A	P	L	E	E										PT						
		(Social)	(Technical)	(Administrative)	(Political)	(Legal)	(Economic)	(Environmental)																
Considerations →	Mitigation Actions ↓	Community Acceptance	Effect on Segment of Population	Technical Feasibility	Long-term Solution	Secondary Impacts	Staffing	Funding Allocated	Maintenance/ Operations	Political Support	Local Champion	Public Support	State Authority	Existing Local Authority	Potential Legal Challenge	Benefit of Action	Cost of Action	Contributes to Economic Goals	Potential Funding Required	Effect on Land / Water	Effect on Endangered Species	Effect on HAZMAT/Waste Sites	Consistent with Native Habitat	Consistent with Local / Federal Laws
10. A		3	2	2	3	2	3												3					18
11. A		3	3	3	3	3	3													3				21
12. A		2	2	2	2	1	1													2				12

STAPLE + E Evaluation Table																									
		S	T	A		P	L		E		E		PT												
		(Social)	(Technical)	(Administrative)		(Political)	(Legal)		(Economic)		(Environmental)														
Considerations →		Community Acceptance	Effect on Segment of Population	Technical Feasibility	Long-term Solution	Secondary Impacts	Staffing	Funding Allocated	Maintenance/ Operations	Political Support	Local Champion	Public Support	State Authority	Existing Local Authority	Potential Legal Challenge	Benefit of Action	Cost of Action	Contributes to Economic Goals	Potential Funding Required	Effect on Land/ Water	Effect on Endangered Species	Effect on HAZMAT/Waste Sites	Consistent with Native Habitat	Consistent with Local / Federal Laws	Priority Total
Mitigation Actions ↓																									
1.A. Update the Master Plan to be consistent with the hazard area maps and implementation strategies developed in the MHMP every 10 years. Update Ordinances every 3 years.		3	4			5		5					4		5					5					37
1.B. Annually review the County's & City's Emergency Operations Plan and identify needed plan updates.		5	4			5		4				3				5				5					31
1.C. Increase GIS and mapping capability to assess the risks in the County & City.		5	5			5		2				2				5				5					29
1.D. Continue																									

Appendix D

Meeting Agendas, Sign In Sheet and Handouts

STAPLE + E Evaluation Table																								
		S (Social)	T (Technical)	A (Administrative)	P (Political)	L (Legal)	E (Economic)			E (Environmental)				PT										
Considerations →		Community Acceptance	Effect on Segment of Population	Technical Feasibility	Long-term Solution	Secondary Impacts	Staffing	Funding Allocated	Maintenance/Operations	Political Support	Local Champions	Public Support	State Authority	Existing Local Authority	Potential Legal Challenge	Benefits of Action	Cost of Action	Contributors to Economic Goals	Outside Funding Required	Effect on Land/Water	Effect on Endangered Species	Effect on HAZMAT/Waste Sites	Consistent with Native Habitat	Consistent with Local / Federal Laws
	Mitigation Actions ↓																							
planning and coordination with multi-agency/regional planning for multi-hazards (applies to Goals 1-5)		5	5	4	2					2						3					2			23
1.E Integration of new information (i.e. LIDAR, CRACKE Canal Report) into County & City planning documents		4	4	3	5									2			3				5			26
2.A Utilize social media as a communication tool, as well as an education tool for hazard loss prevention		4	4	4	3									2			4				2			23
2.B Conduct a minimum of one disaster exercise each year		5	5	5	5									2			4				1			27
2.C Prepare, develop, & distribute		3	2	2	2									2			4				1			16

STAPLE + E Evaluation Table																								
		S	T	A	P	L	E	E										PT						
		(Social)	(Technical)	(Administrative)	(Political)	(Legal)	(Economic)	(Environmental)																
Considerations →	Mitigation Actions ↓	Community Acceptance	Effect on Segment of Population	Technical Feasibility	Long-term Solution	Secondary Impacts	Staffing	Funding Allocated	Maintenance/Operations	Political Support	Local Champion	Public Support	State Authority	Existing Local Authority	Potential Legal Challenge	Benefits of Action	Cost of Action	Contributors to Economic Goals	Outside Funding Required	Effect on Land/Water	Effect on Endangered Species	Effect on HAZMAT/Waste Sites	Consistent with Native Habitat	Consistent with Local / Federal Laws
	appropriate public information about hazard mitigation programs and projects at County and City-sponsored events	3	4	3	2	2	1	1																17
	3.A Pursue studies and formalized agreements with upstream agencies to minimize impacts of drought conditions, including aquifer water quality, ground stabilization, economic impacts and municipal/private well water supply	5	4	4	3	2	5	5																28
	3.B Encourage public participation in	5	4	3	4	1	3	2																22

Appendix D

Meeting Agendas, Sign In Sheet and Handouts

STAPLE + E Evaluation Table										
	S	T	A	P	L	E	E			PT
	(Social)	(Technical)	(Administrative)	(Political)	(Legal)	(Economic)	(Environmental)			
Considerations →	Community Acceptance	Effect on Segment of Population	Technical Feasibility	Long-term Solution	Secondary Impacts	Shifting	Funding Allocated	Maintenance / Operations	Political Support	Local Champion
Mitigation ↓	Public Support	State Authority	Existing Local Authority	Potential Legal Challenge	Benefits of Action	Cost of Action	Contributes to Economic Goals	Outside Funding Required	Effect on Land / Water	Effect on Endangered Species
drought strategies through public information programs on water conservation and drought resistant landscaping and through building code ordinances.	5	5	4	3	1	4		2		24
4.A Continue to enforce the International Building Code (IBC) provisions pertaining to grading and construction relative to seismic hazards. Update County Codes to IBC 2012 when it is revised.	5	5	4	1	4	4		5		28
4.B Implement an Unreinforced Masonry (URM) building program that determines the structural safety of critical	3	5	2	1	2	3		1		17

STAPLE + E Evaluation Table										
	S	T	A	P	L	E	E			PT
	(Social)	(Technical)	(Administrative)	(Political)	(Legal)	(Economic)	(Environmental)			
Considerations →	Community Acceptance	Effect on Segment of Population	Technical Feasibility	Long-term Solution	Secondary Impacts	Shifting	Funding Allocated	Maintenance / Operations	Political Support	Local Champion
Mitigation ↓	Public Support	State Authority	Existing Local Authority	Potential Legal Challenge	Benefits of Action	Cost of Action	Contributes to Economic Goals	Outside Funding Required	Effect on Land / Water	Effect on Endangered Species
facility and infrastructure, and retrofit buildings, if necessary.	3	4	4	2	1	2		1		17
4.C. Implement an Unreinforced Masonry (URM) building program that determines the structural safety of existing building inventory, and retrofit buildings, if necessary.	3	4	5	2	1	3		1		19
5.A Improve communication, collaboration and integration among stakeholders and promote awareness of epidemic threats.	5	3	3	2	1	2		1		17
5.B Create & implement a training and exercise program relative to	6	2	2	2	1	1		1		14

Appendix D

Meeting Agendas, Sign In Sheet and Handouts

STAPLE + E Evaluation Table															
	S	T	A	P	L	E	E					PT			
	(Social)	(Technical)	(Administrative)	(Political)	(Legal)	(Economic)	(Environmental)								
Considerations →	Community Acceptance	Effect on Segment of Population	Technical Feasibility	Long-term Solution	Secondary Impacts	Staffing	Funding Allocated	Maintenance Operations	Political Support	Local Champion	Public Support	State Authority	Existing Local Authority	Potential Legal Challenge	
Mitigation ↓															
epidemics															
6.A Review and update flood plans that would include coordination with adjacent counties, cities, and special districts supporting a regional approach to flood control	5	5	2	2		4		5		5		5			28
6.B Install new flood facilities including upgrade of the existing storm drain system to current standards including culverts and channel improvements	5	5	2	2		4		5		5		5			28
6.C Protect and enhance existing water conveyance structures, storage, and	5	5	2	2		3		5		5		5			27

STAPLE + E Evaluation Table															
	S (Social)		T (Technical)		A (Administrative)		P (Political)		L (Legal)		E (Economic)		E (Environmental)		PT
Considerations →	Community Acceptance	Effect on Segment of Population	Technical Feasibility	Long-term Solution	Secondary Impacts	Staffing	Funding Allocated	Maintenance Operations	Political Support	Local Champion	Public Support	State Authority	Existing Local Authority	Potential Legal Challenge	
Mitigation Actions ↓															
treatment facilities to reduce impact from flood.	5		5		2		5		3		5		5		30
6.D Formalize agreements to utilize federal lands to spread flood and precautionary release waters.	5		4		2		4		3		5		5		28
6.E Land acquisition of repetitive loss structures.	4		4		2		3		3		5		5		26
6.F Improve natural waterways in County for drainage.	4		4		2		3		3		5		5		26
6.G Implement multiple diversion projects for flood reduction along the Carson River and canal system.	5		5		2		3		3		5		5		28
7.A In areas at risk to severe	5		5		2		3		3		5		5		28

Appendix D

Meeting Agendas, Sign In Sheet and Handouts

STAPLE + E Evaluation Table																									
		S	T	A	P	L	E			E			PT												
		(Social)	(Technical)	(Administrative)	(Political)	(Legal)	(Economic)			(Environmental)															
Considerations →	Mitigation Actions ↓	Community Acceptance	Effect on Segment of Population	Technical Feasibility	Long-term Solution	Secondary Impacts	Staffing	Funding Allocated	Maintenance Operations	Political Support	Local Champion	Public Support	State Authority	Existing Local Authority	Potential Legal Challenge	Benefit of Action	Cost of Action	Contributors to Economic Goals	Outside Funding Required	Effect on Land/ Water	Effect on Endangered Species	Effect on HAZMAT/Waste Sites	Consistent with Native Habitat	Consistent with Local / Federal Laws	Priority Total
weather, retrofit public buildings to withstand snow loads and severe winds to prevent roof collapse/damage.		2	3			2				1				2				4			1				15
7.B Enhance shelter facilities to withstand severe weather events (electrical, structural, etc.)		2	3			2				1				2				4				1			15
8.A Develop partnerships for a community based vegetation management program including chipping programs.		3	4			2				1				2				4				1			17
9.A Enforce zoning ordinances to reduce public health risks from hazardous materials releases.		2	2			2				1				2				2				1			12

STAPLE + E Evaluation Table																								
		S	T	A	P	L	E	E										PT						
		(Social)	(Technical)	(Administrative)	(Political)	(Legal)	(Economic)	(Environmental)																
Considerations ➡	Mitigation Actions ⬅	Community Acceptance																						
		Effect on Segment of Population																						
			Technical Feasibility																					
			Long-term Solution																					
			Secondary Impacts																					
			Staffing																					
			Funding Allocated																					
			Maintenance/ Operations																					
			Political Support																					
			Local Champion																					
			Public Support																					
			State Authority																					
			Existing Local Authority																					
			Potential Legal Challenge																					
			Benefit of Action																					
			Cost of Action																					
			Contributors to Economic Goals																					
			Outside Funding Required																					
			Effect on Land / Water																					
			Effect on Endangered Species																					
			Effect on HAZMAT/Waste Sites																					
			Consistent with Native Habitat																					
			Consistent with Local / Federal Laws																					
			Priority Total																					
10. A																								
11. A																								
12. A																								

Appendix D

Meeting Agendas, Sign In Sheet and Handouts

L M J H ✓

	S (Social)	T (Technical)	A (Administrative)	P (Political)	L (Legal)	E (Economic)	E (Environmental)	PT
<div style="display: flex; justify-content: space-between;"> <div> <p>Considerations →</p> <p>Mitigation Actions ↓</p> </div> <div> <p>Community Acceptance</p> <p>Effect on Segment of Population</p> <p>Technical Feasibility</p> <p>Long-term Solution</p> <p>Secondary Impacts</p> <p>Staffing</p> <p>Funding Allocated</p> <p>Maintenance/ Operations</p> <p>Political Support</p> <p>Local Champion</p> <p>Public Support</p> <p>State Authority</p> <p>Existing Local Authority</p> <p>Potential Legal Challenge</p> <p>Benefit of Action</p> <p>Cost of Action</p> <p>Contributes to Economic Goals</p> <p>Outside Funding Required</p> <p>Effect on Land/ Water</p> <p>Effect on Endangered Species</p> <p>Effect on HAZMAT Waste Sites</p> <p>Consistent with Native Habitat</p> <p>Consistent with Local / Federal Laws</p> <p>Priority Total</p> </div> </div>								
1.A. Update the Master Plan to be consistent with the hazard area maps and implementation strategies developed in the MHPMP every 10 years. Update Ordinances every 3 years.	4	3	3	4	4	2	3	23
1.B. Annually review the County's & City's Emergency Operations Plan and identify needed plan updates.	3	3	3	4	4	2	3	24
1.C. Increase GIS and mapping capability to assess the risks in the County & City.	3	4	3	3	3	4	2	22
1.D. Continue								

	S (Social)	T (Technical)	A (Administrative)	P (Political)	L (Legal)	E (Economic)	E (Environmental)	PT
<div style="display: flex; justify-content: space-between;"> <div> <p>Considerations →</p> <p>Mitigation Actions ↓</p> </div> <div> <p>Community Acceptance</p> <p>Effect on Segment of Population</p> <p>Technical Feasibility</p> <p>Long-term Solution</p> <p>Secondary Impacts</p> <p>Staffing</p> <p>Funding Allocated</p> <p>Maintenance/ Operations</p> <p>Political Support</p> <p>Local Champion</p> <p>Public Support</p> <p>State Authority</p> <p>Existing Local Authority</p> <p>Potential Legal Challenge</p> <p>Benefit of Action</p> <p>Cost of Action</p> <p>Contributes to Economic Goals</p> <p>Outside Funding Required</p> <p>Effect on Land/ Water</p> <p>Effect on Endangered Species</p> <p>Effect on HAZMAT Waste Sites</p> <p>Consistent with Native Habitat</p> <p>Consistent with Local / Federal Laws</p> <p>Priority Total</p> </div> </div>								
planning and coordination with multi-agency/regional planning for multi-hazards (applies to Goals 3-9).	3	2	2	5	3	5	2	22
1.E. Integration of new information, (i.e. LIDAR, USACE Canal Report) into County & City planning documents.	3	4	2	4	3	4	4	25
2.A. Utilize social media as a communication tool, as well as an education tool for hazard loss prevention.	5	4	3	5	5	4	2	26
2.B. Conduct a minimum of one disaster exercise each year.	5	5	5	5	5	4	2	31
2.C. Prepare, develop, & distribute	4	3	2	5	4	4	2	24

Meeting Agendas, Sign In Sheet and Handouts

STAPLE + E Evaluation Table																							
	S	T	A	P	L	E	E																PT
	(Social)	(Technical)	(Administrative)	(Political)	(Legal)	(Economic)	(Environmental)																
Considerations →	Community Acceptance	Effect on Segment of Population	Technical Feasibility	Long-term Solution	Secondary Impacts	Staffing	Funding Allocated	Maintenance/ Operations	Political Support	Local Champion	Public Support	State Authority	Existing Local Authority	Potential Legal Challenge	Benefit of Action	Cost of Action	Contributors to Economic Goals	Outside Funding Required	Effect on Land/ Water	Effect on Endangered Species	Effect on HAZMAT/Waste Sites	Consistent with Native Habitat	Consistent with Local / Federal Laws
Mitigation Actions ↓																							
appropriate public information about hazard mitigation programs and projects at County and City-sponsored events.																							
3.A Permit studies and formalized agreements with upstream agencies to minimize impacts of drought conditions, including septic water quality, ground stabilization, economic impacts and municipal/private well water supply.	5	4	3	5	3										5				5				
3.B Encourage public participation in	4	4	2	4	4										4				4				

STAPLE + E Evaluation Table								
	S (Social)	T (Technical)	A (Administrative)	P (Political)	L (Legal)	E (Economic)	E (Environmental)	P ¹
<p>Considerations</p> <p>Mitigation Actions</p>	Community Acceptance Effect on Segment of Population	Technical Feasibility Long-term Solution Secondary Impacts	Funding Allocated Maintenance Operations	Political Support Local Champions Public Support	State Authority Existing Local Authority Potential Legal Challenge	Benefits of Action Cost of Action Contributes to Economic Goals Outside Funding Required	Effect on Land/Water Effect on Endangered Species Effect on Hazardous Waste Sites Compliance with Native Habitat Consistent with Local/Federal Laws	
drought strategies through public information programs on water conservation and drought resistant landscaping and through building code ordinances								
4.A Continue to enforce the International Building Code (IBC) provisions pertaining to grading and construction relative to seismic hazards. Update County Codes to IBC 2012 when it is released.	5	5	3	5	5	2	4	25
4.B Implement an Unreinforced Masonry (URM) building program that determines the structural safety of critical	4	5	2	5	5	2	4	25

Appendix D

Meeting Agendas, Sign In Sheet and Handouts

STAPLE + E Evaluation Table											
	S	T	A	P	L	E	E	E	PT		
	(Social)	(Technical)	(Administrative)	(Political)	(Legal)	(Economic)		(Environmental)			
Considerations →	Community Acceptance	Effect on Segment of Population	Technical Feasibility	Long-term Solution	Secondary Impacts	Shelling	Funding Allocated	Maintenance Operations	Political Support	Local Champion	Public Support
Mitigation Actions ↓	State Authority	Existing Local Authority	Potential Legal Challenge	Identify of Action	Cost of Action	Contributes to Economic Goals	Outside Funding Required	Effect on Land/ Water	Effect on Endangered Species	Effect on HAZMAT/Waste Sites	Consistent with Native Habitat
facility and infrastructure, and retrofit buildings, if necessary.											
4.C. Implement an Unreinforced Masonry (URM) building program that determines the structural safety of existing building inventory, and retrofit buildings, if necessary.	5	2	2	4	4	2		4			23
5.A Improve communication, collaboration and integration among stakeholders and promote awareness of epidemic threats.	4	5	4	4	3	2		2			24
5.B Create & implement a training and exercise program relative to	4	3	3	4	4	2		2			30

STAPLE + E Evaluation Table											
	S	T	A	P	L	E	E	E	PT		
	(Social)	(Technical)	(Administrative)	(Political)	(Legal)	(Economic)		(Environmental)			
Considerations →	Community Acceptance	Effect on Segment of Population	Technical Feasibility	Long-term Solution	Secondary Impacts	Shelling	Funding Allocated	Maintenance Operations	Political Support	Local Champion	Public Support
Mitigation Actions ↓	State Authority	Existing Local Authority	Potential Legal Challenge	Identify of Action	Cost of Action	Contributes to Economic Goals	Outside Funding Required	Effect on Land/ Water	Effect on Endangered Species	Effect on HAZMAT/Waste Sites	Consistent with Native Habitat
epidemics											
6.A Review and update flood plans that would include coordination with adjacent counties, cities, and special districts supporting a regional approach to flood control.	5	5	2	5	1	5		5			30
6.B Install new flood facilities including upgrade of the existing storm drain system to current standards including culverts and channel improvements.	5	5	2	5	4	5		5			31
6.C Protect and enhance existing water conveyance structures, storage, and	5	5	2	5	4	5		5			31

Appendix D

Meeting Agendas, Sign In Sheet and Handouts

STAPLE + E Evaluation Table											
	S	T	A	P	L	E	E				PT
	(Social)	(Technical)	(Administrative)	(Political)	(Legal)	(Economic)	(Environmental)				
Considerations →	Community Acceptance	Effect on Segment of Population	Technical Feasibility	Long-term Solution	Secondary Impacts	Staffing	Funding Allocated	Maintenance/ Operations	Political Support	Local Champion	Public Support
Mitigation Actions ↓	State Authority	Existing Local Authority	Potential Legal Challenge	Benefit of Action	Cost of Action	Contributes to Economic Goals	Outside Funding Required	Effect on Land/ Water	Effect on Endangered Species	Effect on HAZMAT/ Waste Sites	Consistent with Native Habitat
											Consistent with Local / Federal Laws
treatment facilities to reduce impact from flood.											
6.D Formalize agreements to utilize federal lands to spread flood and precautionary release waters.	5	5	2	5	1	3		5			18
6. E. Land acquisition of repetitive loss structures.	5	5	2	3	5	2		4			26
6.F Improve mixed waterways in County for drainage.	5	4	2	4	4	5		4			28
6.G Implement multiple diversion projects for flood reduction along the Carson River and canal system.	5	5	3	5	4	4		5			31
7.A Is area at risk to severe											

STAPLE + E Evaluation Table												
	S	T	A	P	L	E	E					PT
	(Social)	(Technical)	(Administrative)	(Political)	(Legal)	(Economic)	(Environmental)					
Considerations →	Community Acceptance	Effect on Segment of Population	Technical Feasibility	Long-term Solution	Secondary Impacts	Staffing	Funding Allocated	Maintenance Operations	Political Support	Local Champion	Public Support	State Authority
Mitigation Actions ↓	Existing Local Authority	Potential Legal Challenge	Benefit of Action	Cost of Action	Contributes to Economic Goals	Outside Funding Required	Effect on Land/Water	Effect on Endangered Species	Effect on HAZMAT/Waste Sites	Consistent with Native Habitat	Consistent with Local / Federal Laws	
weather, retrofit public buildings to withstand snow loads and severe winds to prevent roof collapse/damage.	3	3	1	2	2	1		2			14	
7.B Enhance shelter facilities to withstand severe weather events (electrical, structural, etc.)	4	4	1	3	3	3		2			20	
8.A Develop partnerships for a community based vegetation management program including chipping programs.	4	4	1	3	3	4		3			22	
9.A Enforce zoning ordinances to reduce public health risks from hazardous materials releases.	4	3	2	4	5	3		3			24	

Appendix D

Meeting Agendas, Sign In Sheet and Handouts

STAPLE + E Evaluation Table																									
		S	T	A	P	L	E	E		E		PT													
		(Social)	(Technical)	(Administrative)	(Political)	(Legal)	(Economic)	(Environmental)																	
Considerations	→	Community Acceptance	Effect on Segment of Population	Technical Feasibility	Long-term Solution	Secondary Impacts	Staffing	Funding Allocated	Maintenance/Operations	Political Support	Local Champion	Public Support	State Authority	Existing Local Authority	Potential Legal Challenge	Benefit of Action	Cost of Action	Contributes to Economic Goals	Outside Funding Required	Effect on Land/ Water	Effect on Endangered Species	Effect on HAZMAT/Waste Sites	Consistent with Native Habitat	Consistent with Local / Federal Laws	Priority Total
Mitigation Actions	↓																								
10. A																									
11. A.																									
12. A.																									

STAPLE + E Evaluation Table																									
		S	T	A	P	L	E			E			PT												
		(Social)	(Technical)	(Administrative)	(Political)	(Legal)	(Economic)			(Environmental)															
Considerations →		Community Acceptance	Effect on Segment of Population	Technical Feasibility	Long-term Solution	Secondary Impacts	Staffing	Funding Allocated	Maintenance/Operations	Political Support	Local Champion	Public Support	State Authority	Existing Local Authority	Potential Legal Challenge	Benefit of Action	Cost of Action	Contributes to Economic Goals	Outside Funding Required	Effect on Land/ Water	Effect on Endangered Species	Effect on HAZMAT/Waste Sites	Consistent with Native Habitat	Consistent with Local / Federal Laws	Priority Total
Mitigation ↓																									
1.A. Update the Master Plan to be consistent with the hazard area maps and implementation strategies developed in the MTHMP every 10 years. Update Ordinances every 3 years.		2	3	2	2								3			3				4				19	
1.B. Annually review the County's & City's Emergency Operations Plan and identify needed plan updates.		3	3	2	2								3			2	2			3				18	
1.C. Increase GIS and mapping capability to assess the risks in the County & City.		3	3	3	4								4			5				4				26	
1.D. Continue																									

Appendix D

Meeting Agendas, Sign In Sheet and Handouts

STAPLE + E Evaluation Table																							
	S	T	A	P	L	E	E																PT
	(Social)	(Technical)	(Administrative)	(Political)	(Legal)	(Economic)	(Environmental)																
Considerations																							
Mitigation Actions																							
Community Acceptance																							
Effect on Segment of Population																							
Technical Feasibility																							
Long-term Solution																							
Secondary Impacts																							
Staffing																							
Funding Allocated																							
Maintenance Operations																							
Political Support																							
Local Champion																							
Public Support																							
State Authority																							
Existing Local Authority																							
Potential Legal Challenge																							
Benefits of Action																							
Cost of Action																							
Contributors to Economic Goods																							
Outside Funding Required																							
Effects on Land/ Water																							
Effect on Endangered Species																							
Effect on HAZMAT/Waste Sites																							
Consistent with Native Habitat																							
Consistent with Local / Federal Laws																							
planning and coordination with multi-agency/regional planning for multi-hazard (applies to Goals 3-5)	3	4	3	4	3	4													3				20
1.B Integration of new information (i.e. LIDAR, USACE Canal Report) into County & City planning documents	3	3	2	3	3	4													3				21
2.A Utilize social media as a communication tool, as well as an education tool for hazard loss prevention.	2	3	2	4	4	3													3				21
2.B Conduct a minimum of one disaster exercise each year.	3	4	3	4	4	5													4				22
2.C Prepare, develop, & distribute	2	4	3	3	4	4													3				23

STAPLE + E Evaluation Table																							
	S	T	A	P	L	E	E																PT
	(Social)	(Technical)	(Administrative)	(Political)	(Legal)	(Economic)	(Environmental)																
Considerations	Community Acceptance	Effect on Segment of Population	Technical Feasibility	Long-term Solution	Secondary Impacts	Staffing	Funding Allocated	Maintenance Operations	Political Support	Local Champion	Public Support	State Authority	Existing Local Authority	Potential Legal Challenge	Benefits of Action	Cost of Action	Contributors to Economic Goods	Outside Funding Required	Effect on Land/Water	Effect on Endangered Species	Effect on HAZMAT/Waste Sites	Consistent with Native Habitat	Consistent with Local / Federal Laws
Mitigation Actions																							
appropriate public information about hazard mitigation programs and projects at County and City-sponsored events.	3	4	3	4	3														3				23
3.A Pursue studies and formalized agreements with upstream agencies to minimize impacts of drought conditions, including aquifer water quality, ground stabilization, economic impacts and municipal/private well water supply.	4	5	3	4	4	4													4				29
3.B Encourage public participation in																							

Appendix D

Meeting Agendas, Sign In Sheet and Handouts

STAPLE + E Evaluation Table										
	S	T	A	P	L	E	E	PT		
	(Social)	(Technical)	(Administrative)	(Political)	(Legal)	(Economic)	(Environmental)			
Considerations →	Community Acceptance	Effect on Segment of Population	Technical Feasibility	Long-term Solution	Secondary Impacts	Staffing	Funding Allocated	Maintenance/ Operations	Political Support	Local Champion
Mitigation ↓										
drought strategies through public information programs on water conservation and drought resistant landscaping and through building code ordinances.	4	4	2	2	3	3	4			22
4.A Continue to enforce the International Building Code (IBC) provisions pertaining to grading and construction relative to seismic hazards. Update County Codes to IBC 2012 when it is released.	2	4	2	3	4	3	2			20
4.B Implement an Unreinforced Masonry (URM) building program that determines the structural safety of critical										

STAPLE + E Evaluation Table										
	S	T	A	P	L	E	E	PT		
	(Social)	(Technical)	(Administrative)	(Political)	(Legal)	(Economic)	(Environmental)			
Considerations →	Community Acceptance	Effect on Segment of Population	Technical Feasibility	Long-term Solution	Secondary Impacts	Staffing	Funding Allocated	Maintenance/ Operations	Political Support	Local Champion
Mitigation ↓										
facility and infrastructure, and retrofit buildings, if necessary.	2	4	3	3	4	2	2			20
4.C. Implement an Unreinforced Masonry (URM) building program that determines the structural safety of existing building, inventory, and retrofit buildings, if necessary.	2	5	4	3	2	4	1			21
5.A Improve communication, collaboration and integration among stakeholders and promote awareness of seismic threats.	2	4	3	3	3	4	2			22
5.B Create & implement a training and exercise program relative to:	2	5	2	2	3	3	2			19

Appendix D

Meeting Agendas, Sign In Sheet and Handouts

STAPLE + E Evaluation Table											
	S	T	A	P	L	E	E	PT			
	(Social)	(Technical)	(Administrative)	(Political)	(Legal)	(Economic)	(Environmental)				
Considerations	Community Acceptance	Effect on Segment of Population	Technical Feasibility	Long-term Solution	Secondary Impacts	Staffing	Funding Allocated	Maintenance Operations	Political Support	Local Champion	Public Support
Mitigation Actions											
epidemics											
6.A Review and update flood plans that would include coordination with adjacent counties, cities, and special districts supporting a regional approach in flood control.	3	5	4	3	3	4	5				27
6.B Install new flood facilities including upgrade of the existing storm drain system to current standards including culverts and channel improvements.	4	5	3	2	3	3	4				24
6.C Protect and enhance existing water conveyance structures, storage, and	3	4	3	2	3	4	4				23

STAPLE + E Evaluation Table											
	S	T	A	P	L	E	E	PT			
	(Social)	(Technical)	(Administrative)	(Political)	(Legal)	(Economic)	(Environmental)				
Considerations	Community Acceptance	Effect on Segment of Population	Technical Feasibility	Long-term Solution	Secondary Impacts	Staffing	Funding Allocated	Maintenance Operations	Political Support	Local Champion	Public Support
Mitigation Actions											
treatment facilities to reduce impact from flood.											
6.D Formulate agreements to utilize federal lands to spread flood and precautionary release waters.	1	4	3	2	3	4	4				21
6.E Land acquisition of repetitive loss structures.	2	3	3	4	3	4	3				22
6.F Improve natural waterways in County for drainage.	2	2	3	2	3	3	3				18
6.G Implement multiple diversion projects for flood reduction along the Carson River and canal system.	3	4	3	2	4	4	4				24
7.A Is area at risk to severe											

Appendix D

Meeting Agendas, Sign In Sheet and Handouts

STAPLE + E Evaluation Table												
	S (Social)	T (Technical)	A (Administrative)	P (Political)	L (Legal)	E (Economic)	E (Environmental)				PT	
Considerations →	Community Acceptance	Effect on Segment of Population	Technical Feasibility	Long-term Solution	Secondary Impacts	Staffing	Funding Allocated	Maintenance/ Operations	Political Support	Local Champion	Public Support	State Authority
Mitigation ↓	Existing Local Authority	Potential Legal Challenge	Benefit of Action	Cost of Action	Contributes to Economic Goals	Outside Funding Required	Effect on Land/ Water	Effect on Endangered Species	Effect on HAZMAT/Waste Sites	Consistent with Native Habitat	Consistent with Local / Federal Laws	Priority Total
weather, retrofit public buildings to withstand snow loads and sever winds to prevent roof collapse/damage.	2	1	2	2	2	1		2				12
7.B Enhance shelter facilities to withstand severe weather events (electrical, structural, etc.)	2	1	2	2	2	1		2				12
8.A Develop partnerships for a community based vegetation management program including chipping programs.	1	1	2	3	1	2		1				11
9.A Enforce zoning ordinances to reduce public health risks from hazardous materials releases.	1	2	3	3	2	2		2				5

STAPLE + E Evaluation Table												
	S (Social)	T (Technical)	A (Administrative)	P (Political)	L (Legal)	E (Economic)	E (Environmental)				PT	
Considerations →	Community Acceptance	Effect on Segment of Population	Technical Feasibility	Long-term Solution	Secondary Impacts	Staffing	Funding Allocated	Maintenance/ Operations	Political Support	Local Champion	Public Support	State Authority
Mitigation ↓	Existing Local Authority	Potential Legal Challenge	Benefit of Action	Cost of Action	Contributes to Economic Goals	Outside Funding Required	Effect on Land/ Water	Effect on Endangered Species	Effect on HAZMAT/Waste Sites	Consistent with Native Habitat	Consistent with Local / Federal Laws	Priority Total
10. A												
11. A												
12. A												