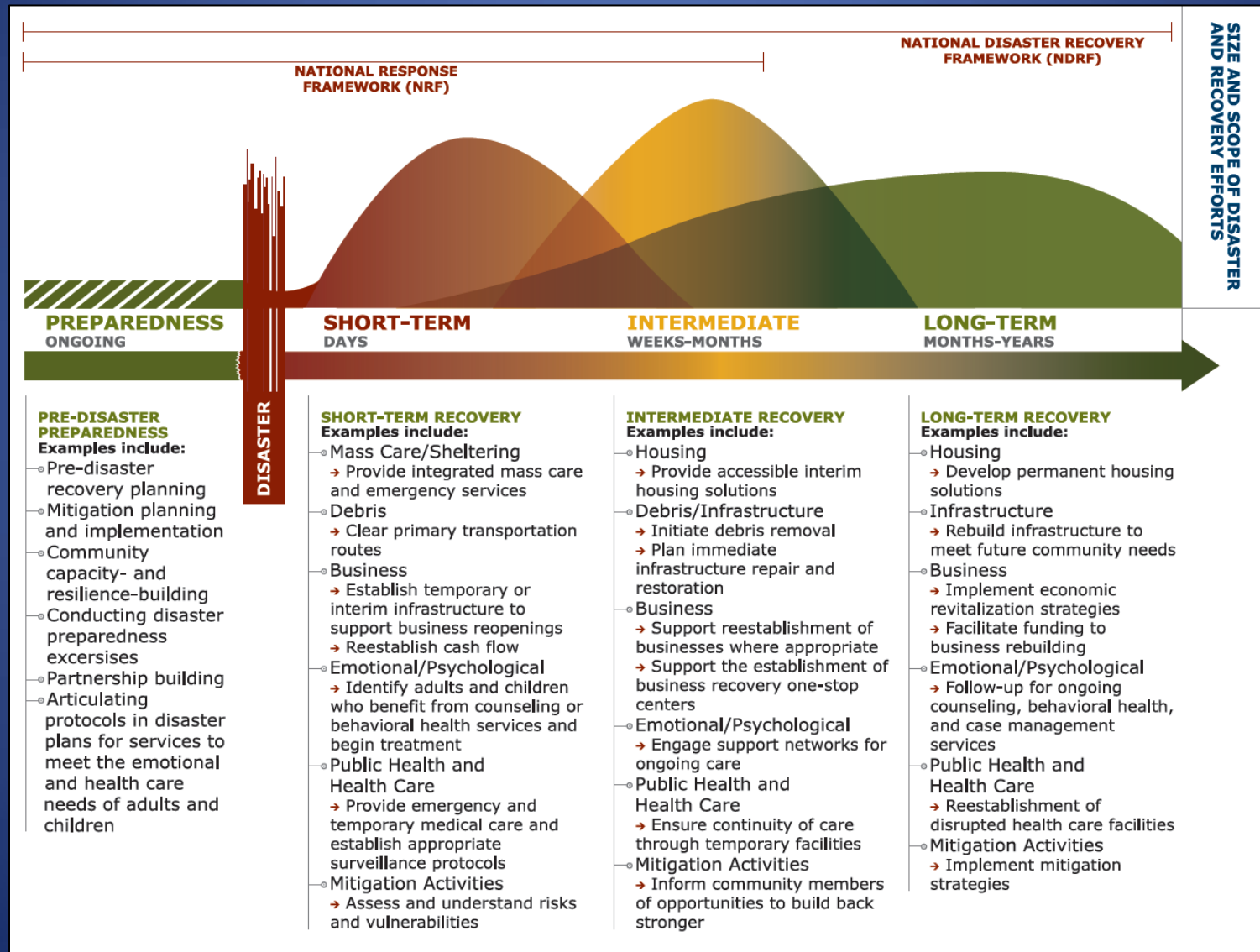


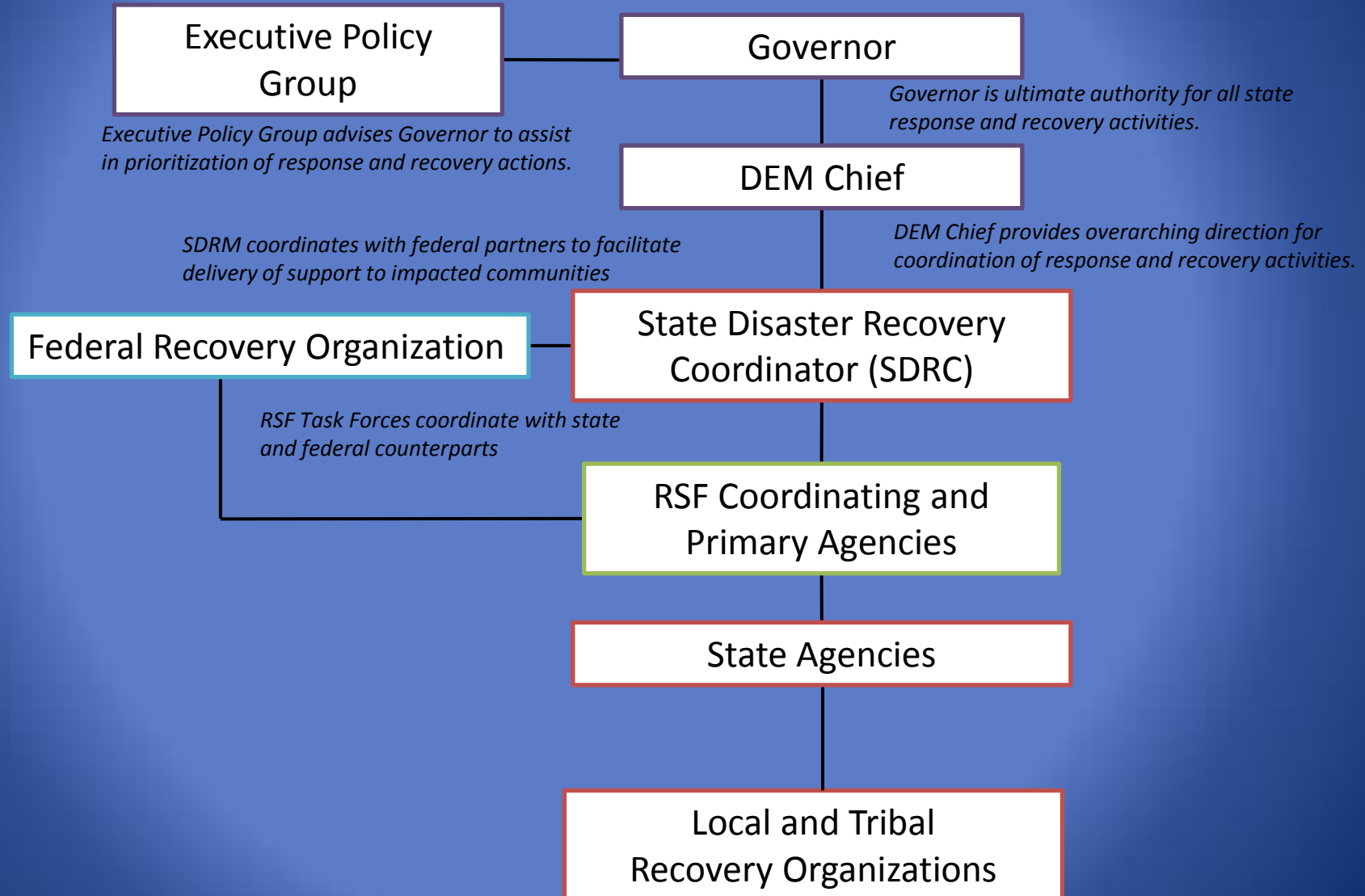
# Resilience

Reflective, Robust, Redundant,  
Flexible, Resourceful, Inclusive

# The Recovery Continuum



# State Recovery Organization



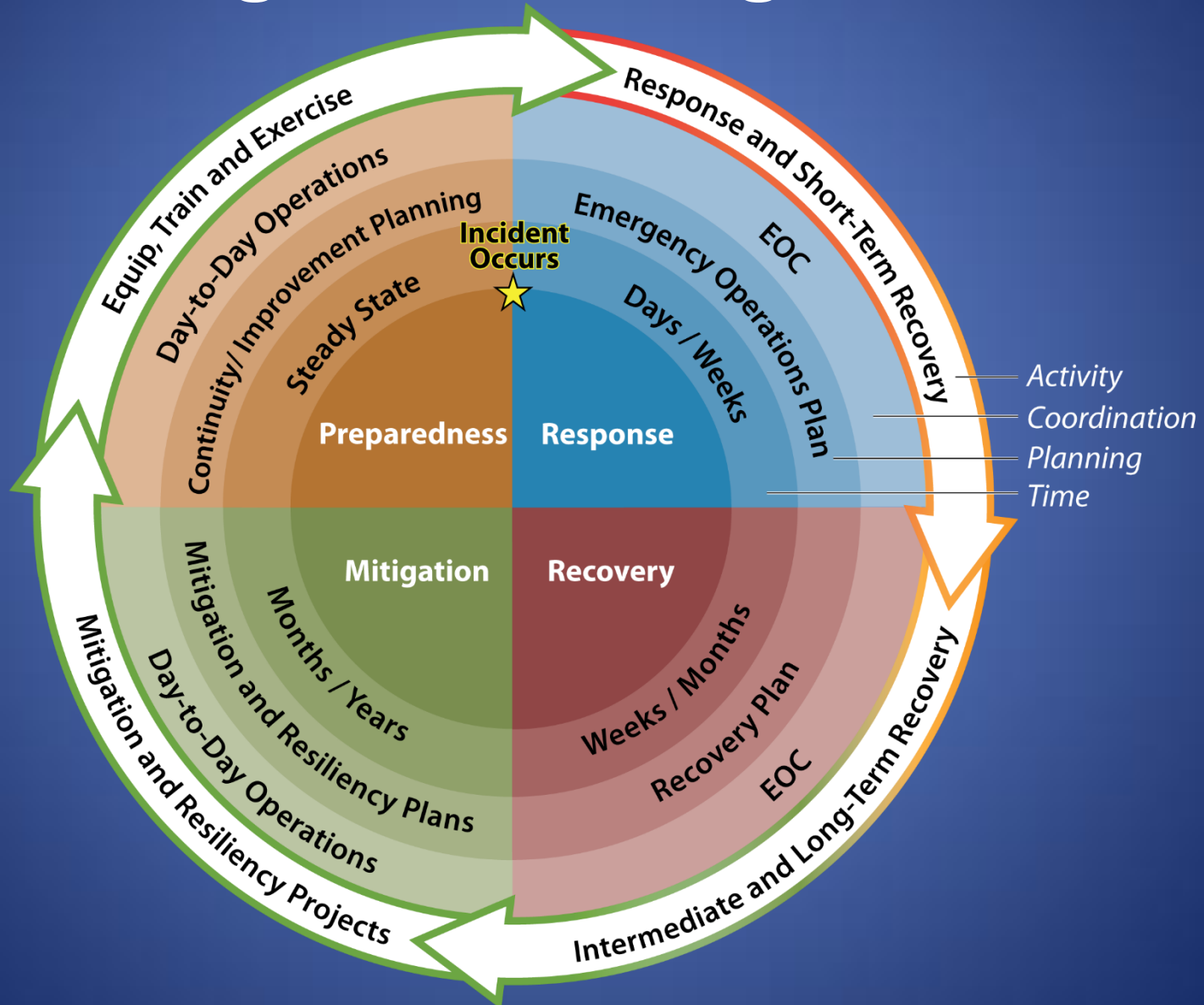
# Coordination

- The Chief of DEM serves as the **State Coordinating Officer** and facilitates recovery efforts across all state agencies
- The **State Disaster Recovery Coordinator** is designated to assist in oversight of recovery operations including oversight of activated Recovery Support Functions
- Recovery activities will be coordinated through the **State Emergency Operations Center**

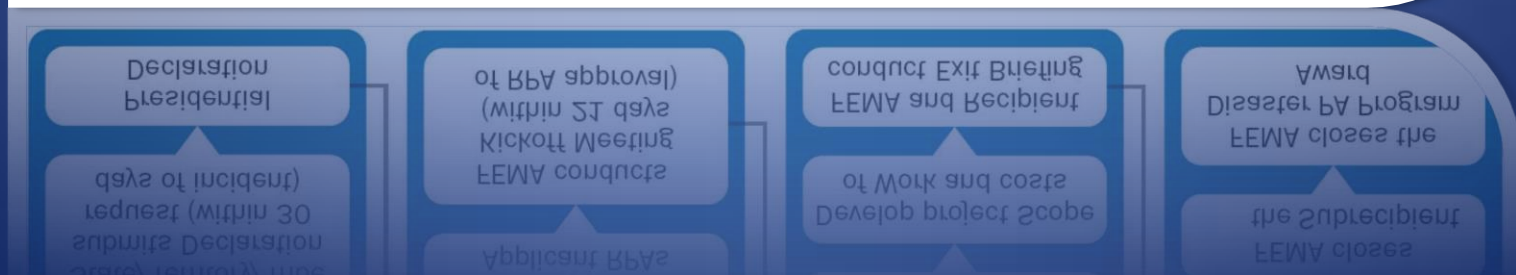
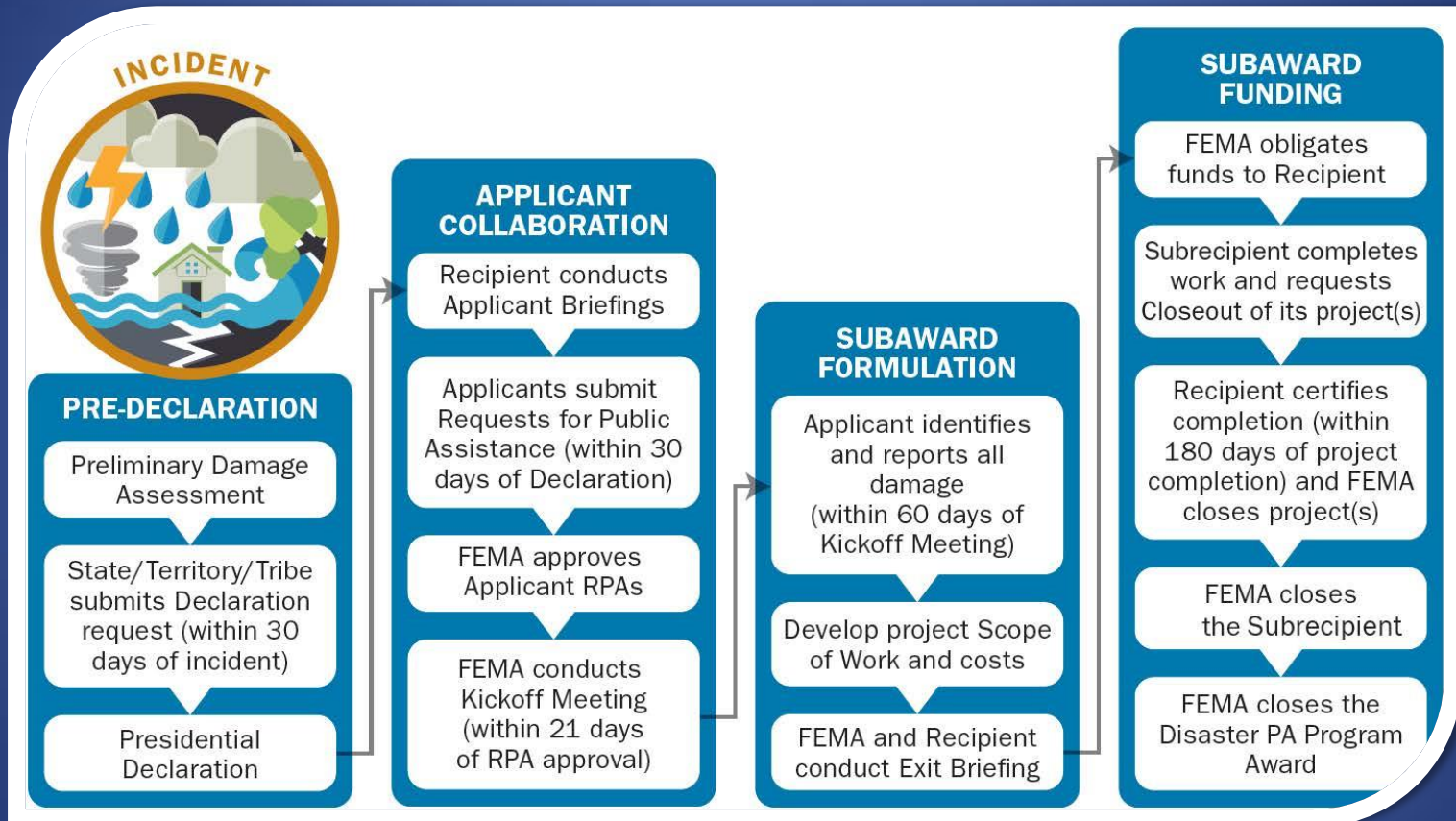
# State Recovery Staff

- Grants Recovery & Mitigation Manager
- State Recovery Officer-Recovery Program & staff development, disaster grants, training, outreach, TA for locals, SEOC-ESF 14 lead, NVDRF-RSF1 lead, implementation, local recovery planning TA, training & exercise.
- State Hazard Mitigation Officer-HM grants, planning, training, outreach, TA for locals.
- ESF 14-3, SRO, GR&M Manager, SHMO
- State PDA team members-3 + (2 PA & 2 IA)

# Fitting Into The Big Picture



# PA Program Implementation



# RSF Roles and Responsibilities

- DEM serves as a **coordinating agency** for all RSFs, providing support at the SEOC
- Each RSF has:
  - **Primary agencies** have statutory authority or established programs critical to the RSF. Also provide coordination and planning support.
  - **Supporting agencies** assist with specialized or targeted support.
  - Community partners are external to the state organization but key to RSF success
- Federal agencies are identified in the **National Disaster Recovery Framework**



# Community Planning and Capacity Building

**Primary Agency: Division of Emergency Management**

- Help local communities develop recovery plans and procedures, specific to a local community's needs. This process involves leadership identification, partnership-building, public engagement and resource coordination. Examples include:
  - Identify disaster impacts
  - Provide planning support
  - Promote an inclusive planning process

