

# 2023 State of Nevada Enhanced HMP Update

Contract Support: Randy Brawley

[Randy.Brawley@WiseOakConsulting.com](mailto:Randy.Brawley@WiseOakConsulting.com)

704-572-7333



# Why Engage in Hazard Mitigation Planning?

- Mitigation is good for us – increases resilience for our communities
- “Reduces loss of life and property by minimizing the impact of disasters”
- FEMA requires a HMP to receive all categories of public assistance
- It saves us money – every \$1 of mitigation saves \$6
- It makes us money
  - \$2B - \$10B in post disaster hazard mitigation
  - \$2.295B in 2022 pre-disaster Building Resilient Infrastructure and Communities
- You have the local knowledge / perspective
  - We can pull from databases, but you have the insight for your community
- Expectations
  - Review shared documents
  - Provide your input

# Overview

- Wise Oak Support
- Administrative
- Update methodology
- Progress
- Future Actions

# Wise Oak Support



GENERAL PROJECT  
MANAGEMENT  
ASSISTANCE



RESEARCH AND  
ANALYSIS



GIS



TECHNICAL WRITING



OTHER ESSENTIAL  
ACTIVITIES ON  
REQUEST



# Major Actions to Date

Developed / developing text style guide

Developed / developing image style guide

Developed / developing FEMA National Risk Index maps

- Hazards Risk Index
- Expected annual loss
- Social vulnerability
- Community resilience

Aligned hazards with national/state standards

- National Risk Index hazards
- State of Nevada Threat and Hazards Guide

Working with FEMA on potential new hazard assessment process

Administrative



# Style Guide - Text

## Text

- Font
  - Body: Times New Roman, 12 pt.
  - Figure and table labels: Figure/Label; Arial, 10 pt.
- General:
  - Alignment: Justified
  - Outline Level: Body Text
  - Special: none
  - Unselect: mirror indents
  - Select: “Automatically adjust right indent when document grid is defined.”
- Line Spacing
  - Single: 6 pt. before and after; justified; Body Text; 0 indentation;
  - Unselect - “Don’t add space between paragraphs of the same style”
  - Select - Snap to grid when document grid is defined

## Outline

- X
- X.X
  - Heading 1: Times New Roman; 13 pt.; bold
- X.X.X
  - Heading 2: Times New Roman; 13 pt.; bold
- X.X.X.X
  - Heading 3: Times new Roman; 12 pt.; Bold; Italics


# Style Guide - Graphics

## Figures

- Label
  - Figure/Table
- Black border
  - Black
  - $\frac{3}{4}$  point
- Shadow
  - Right and bottom

## Tables

- Label
  - Table Title
- Style



|   |   |   |   |   |
|---|---|---|---|---|
| — | — | — | — | — |
| — | — | — | — | — |
| — | — | — | — | — |
| — | — | — | — | — |
| — | — | — | — | — |

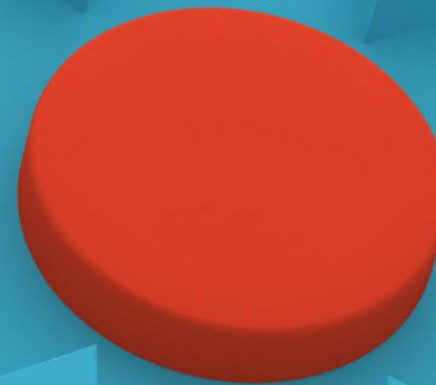


What preferences do you  
have?

Other?



# Update Methodology



# Text Review

Editorial review for  
standardization

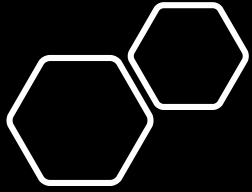
Updating – NOT  
re-writing

Freshening up  
information

Consistent  
formatting

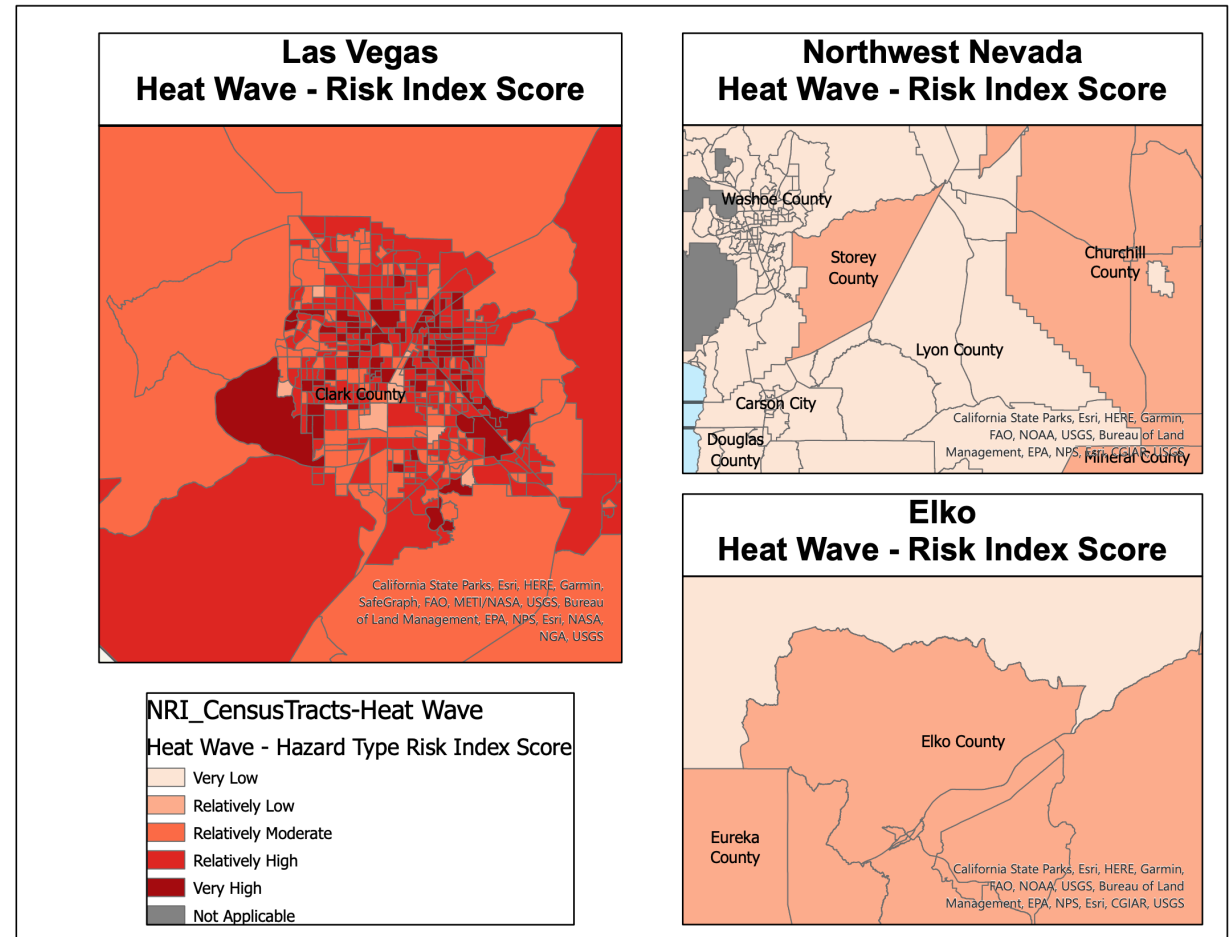
“XX” is a  
placeholder for  
items like figure  
numbers

The very last  
review will be for  
final formatting  
and numberin



# Image Review

- Updating if older than 1 year
- Border: Black; ¾ point
- Shadow: Right and Bottom



# Table Review

- General: Times New Roman 11 point
  - Adjust as required
- Black Heading
- Alternating grey and white

**Table 3-4. Risk Categories Assigned to Nevada Hazards**

| <b>High Risk</b>  | <b>Medium/Significant Risk</b> | <b>Low Risk</b>                    |
|-------------------|--------------------------------|------------------------------------|
| Earthquake        | Heat Wave                      | Tsunami                            |
| Wildfire          | Hazardous Materials            | Hail                               |
| Riverine Flooding | Drought                        | Avalanche                          |
| Pandemic          | Strong Wind                    | Landslide                          |
|                   |                                | Tornado                            |
|                   |                                | Infestation                        |
|                   |                                | Land Subsidence and ground failure |
|                   |                                | Volcanic Activity                  |
|                   |                                | Expansive Soil                     |

# HMP Hazards vs. State vs. FEMA NRI (1 of 3)

| Legacy HMP           | Nevada Threat & Hazard Guide  | FEMA NRI   | Comment / Question  |
|----------------------|---|--|---|
| Avalanche            | Geohazards - Avalanche  | Avalanche  |   |
| Drought              | Drought   | Drought  |   |
| Earthquakes          | Geohazards - Earthquake   | Earthquake   | Do we want to change to Earthquake?   |
| Epidemic             | Infectious Disease <ul style="list-style-type: none"> <li>Emerging Disease with Epidemic or Pandemic Potential;</li> <li>Respiratory Virus with Epidemic or Pandemic Potential</li> </ul> | N/A  | Do we want to go more general with something like Infectious Disease?                                       |
| Expansive Soils      | N/A   | N/A  |   |
| Extreme Heat         | Extreme Heat  | Heat Wave  |   |
| Floods               | Floods, Landslides & Debris Flow <ul style="list-style-type: none"> <li>Alluvial Fan Flooding</li> <li>Flash Flood</li> <li>Riverine</li> </ul>   | Riverine Flooding  |   |
| Hail & Thunderstorms | Severe Weather <ul style="list-style-type: none"> <li>Microburst</li> <li>Straight-Line Winds</li> <li>Thunderstorms &amp; Lightning</li> </ul>   | <ul style="list-style-type: none"> <li>Hail</li> <li>Lightning</li> <li>Strong Wind</li> </ul> | Do we want to Make this section "Severe Weather" or change to "Thunderstorm & Lightning" or leave it as is? |

# HMP Hazards vs. State vs. FEMA NRI (2 of 3)

| Legacy HMP                         | Nevada Threat & Hazard Guide  | FEMA NRI   | Comment / Question                 |
|------------------------------------|---|--|------------------------------------|
| Infestation                        | N/A   | N/A  |                                    |
| Land Subsidence and Ground Failure | Geohazards <ul style="list-style-type: none"> <li>Fissures and Subsidence</li> </ul>                            | N/A  |                                    |
| Landslide                          | Floods, Landslides & Debris Flow <ul style="list-style-type: none"> <li>Landslides &amp; Debris Flow</li> </ul> | Landslide  |                                    |
| Severe Storm and Extreme Snowfall  | Extreme Weather <ul style="list-style-type: none"> <li>Winter Storms &amp; Extreme Cold</li> </ul>              | <ul style="list-style-type: none"> <li>Cold Wave</li> <li>Ice Storm</li> <li>Winter Weather</li> </ul> |                                    |
| Tornado                            | Tornado   | Tornado  |                                    |
| Tsunami/Seiche                     | Seiche  | Tsunami  | Do we want to change to Seiche?    |
| Volcano                            | Volcanoes   | Volcanic Activity  | Do we want to change to Volcanoes? |
| Wildland Fire                      | Fire <ul style="list-style-type: none"> <li>Wildland Fire</li> <li>Wildland Urban Interface</li> </ul>          | Wildfire   |                                    |

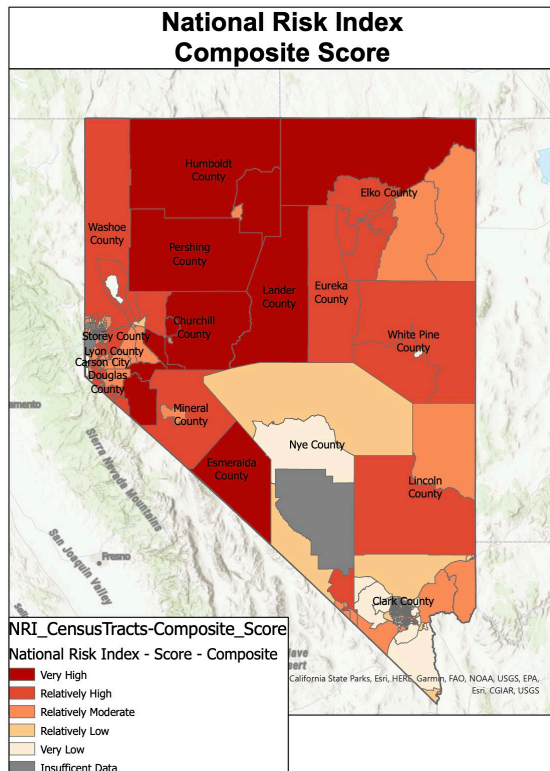
# HMP Hazards vs. State vs. FEMA NRI (3 of 3)

| Legacy HMP                                   | Nevada Threat & Hazard Guide   | FEMA NRI | Comment / Question  |
|--|--|----------|---|
| Hazardous Materials                          | Chemical, Biological, Radiological, Nuclear & Explosives (CBRNE) <ul style="list-style-type: none"> <li>• Chemical</li> <li>• Biological</li> <li>• Radiological</li> <li>• Nuclear</li> <li>• Explosives</li> </ul> | N/A      | Do we want to split dam failure out from “Natural Hazards” and putting it into a “Technological Hazards” section      |
| Flooding due to Dam Failure                  | Infrastructure <ul style="list-style-type: none"> <li>• Dam Failure</li> </ul>   | N/A      | Do we want to split dam failure out from “Natural Hazards” and putting it into a “Technological Hazards” section      |
| Flooding Along Irrigation Ditches and Canals | Floods, Landslides & Debris Flow <ul style="list-style-type: none"> <li>• Flash Flood</li> </ul>   | N/A      | Do we want to out flooding along ditches from “Natural Hazards” and putting it into a “Technological Hazards” section |
| ???  | Infrastructure <ul style="list-style-type: none"> <li>• Natural Gas Pipeline Incident</li> </ul>   |          | Do we want to add Natural Gas Pipeline Incident?  |
| ???  | Infrastructure <ul style="list-style-type: none"> <li>• Power Outage</li> </ul>  |          | Do we want to add Power Outage?   |

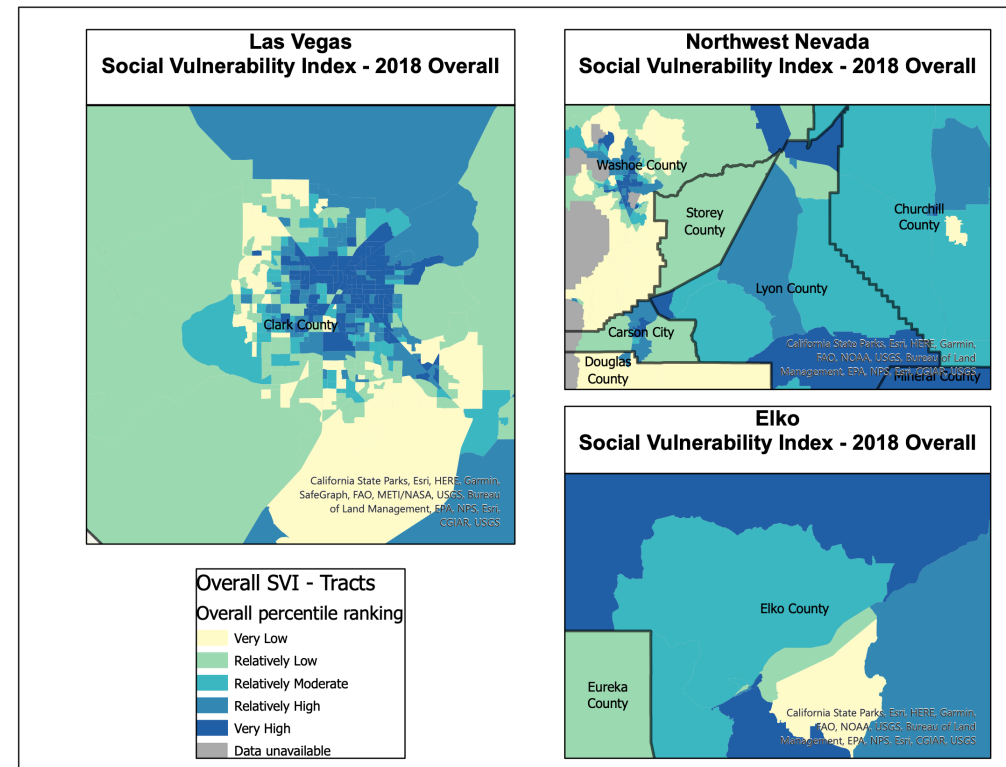


# Baseline: FEMA's National Risk Index

## National Risk Index

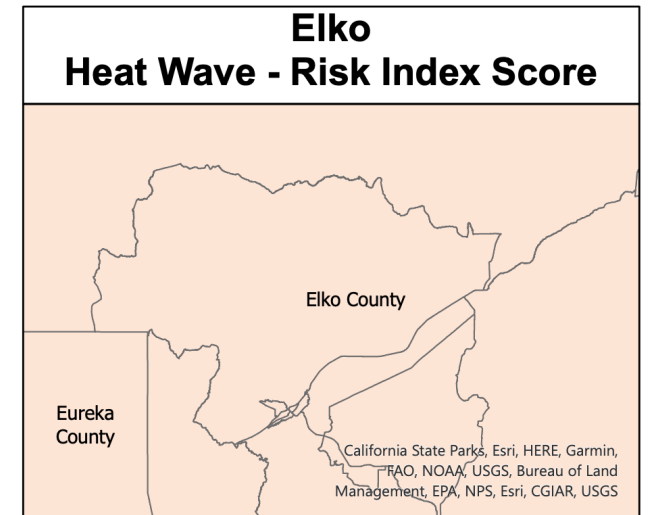
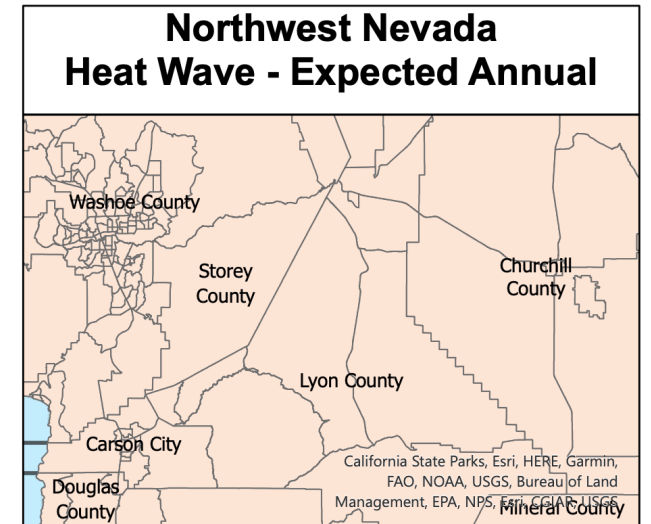
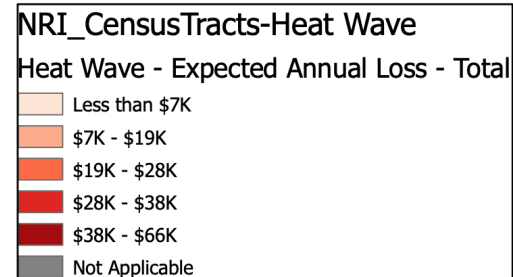
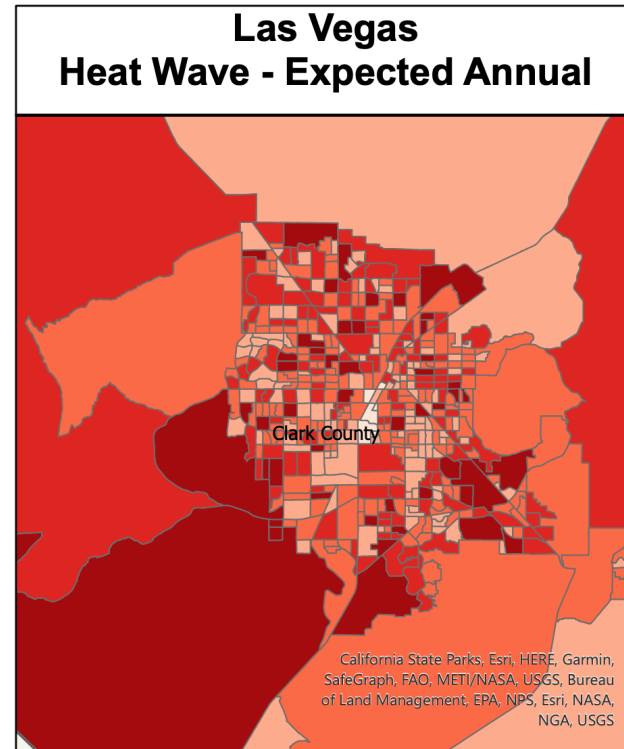


## Social Vulnerability Index



# Expected Loss

- From FEMA's National Risk Index database
- Request for FEMA to approve as "quantitative" expected loss – 2018 comment



# Progress Update

# First-Pass Reviews Complete

| DOCUMENTS                        | OTHER ITEMS   |
|----------------------------------|---|
| Avalanche                        | NRI risk maps are in the Hazard folder as each is developed |
| Drought                          | Complete hazard profiles are in Working Documents folder    |
| Epidemic                         | Updating HMP requirement boxes throughout Section 3         |
| Expansive Soils                  |   |
| Extreme Heat                     |   |
| Hail & Thunderstorm              |   |
| Flood                            |   |
| Land Subsidence & Ground Failure |   |
| Landslide                        |   |
| Severe Storm & Extreme Snowfall  |   |
| Tornado                          |   |
| Tsunami / Seiche                 |   |
| Volcano                          |   |
| Wildland Fire                    |   |

# Future Actions



**Complete hazard profiles**

Submissions complete by **2/13/2023**

Follow-up with POCs after updates



**Mitigation Activity update – 2/13/23**



**Planning meeting 2 - 2/15/2023**



**Planning meeting 3 – 3/15/2023**



**Ranking of hazards - TBD**



**Vulnerability and loss assessment – TBD**



**Build out section 3 - combine new profiles**

# Summary

## Standardizing the style

- Based on existing style
- Capturing new style

## Moving to national – level databases

- National Risk Index
- Social Vulnerability

## Request for map-displayed quantitative losses

- FEMA requires quantitative impacts

## 3 of 19 hazard profile updates remain

- Earthquake
- HAZMAT
- Infestation

## Look to wrap up hazard analysis in March

- Hazard Ranking
- New hazards such as pipelines and power failures?